

# CERTIFICATE OF LOCATION OF GOVERNMENT CORNER

SOUTH QUARTER Corner of Section 19, Township 38, Range 24, 4TH P.M.  
 STATE OF MINNESOTA, County of KANABEC

At the corner location shown on the sketch:  
 On 06/ /2003 Found an Aluminum Monument.

Kanabec County U.S. Survey Feet Coordinates  
 NAD 1983, HARN 1996 Adjustment  
 Obtained by RTK GPS Observation

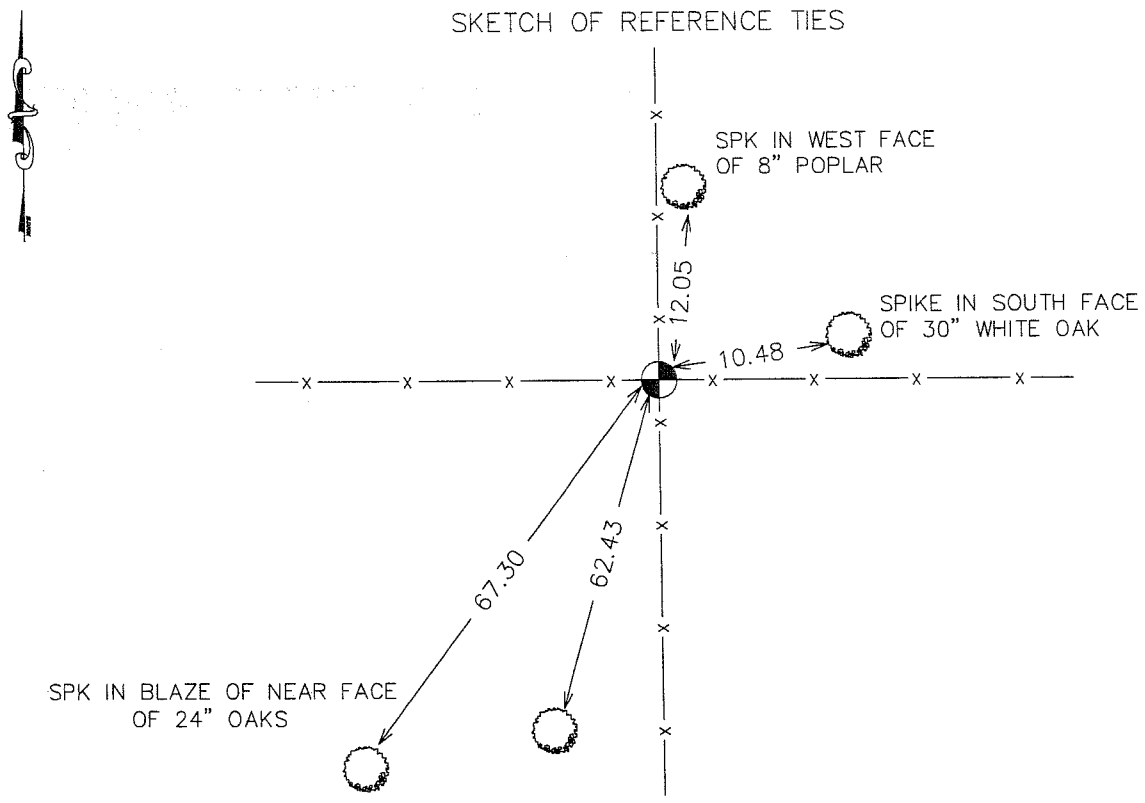
Northing= 111226.23

Easting= 377676.08

Note: NAD 1983, HARN 1996 Adjustment  
 coordinates are NOT compatible with  
 NAD 1983 coordinates

Note: 1 Meter=3937/1200 U.S. Survey Feet

SKETCH OF REFERENCE TIES



Statement of evidence relative to this corner location is on back of page.

I hereby certify that this document and the data contained herein was prepared by me or under my direct supervision.

Ernest L. Rud  
Signature

1-23-2006  
Date

Registration No. Minn No 9808

Land Surveyor,      [ ] Professional Engineer

[ ] County Surveyor,      [ ] County Engineer

## OFFICE OF THE COUNTY RECORDER

County of \_\_\_\_\_

I hereby certify that this document was filed in the County Recorder's office at \_\_\_\_\_ M. on the \_\_\_\_\_ day of \_\_\_\_\_ A.D., 20\_\_\_\_

County Recorder \_\_\_\_\_

BY \_\_\_\_\_ Deputy

**DOCUMENT NO.** \_\_\_\_\_

## STATEMENT OF EVIDENCE

From Tie Sheet 565

All of the original bearing trees are now gone.

In 1921, George Jenks found a post and set a stone marked with an "x" on top.

In 1911, Charles Handschu found this stone with an "x" on top, and made ties to a 6" Oak (South 25° West, 68 feet), which is now a 24" Oak, and a 4" Oak (South 10° West, 63.6 feet), which is now a 24" Oak.

On July 2, 1980, I found Handschu's ties and made an excavation at the fence line intersection and found a cut sandstone marked with an "x" on top, and replaced it with a cast aluminum monument 4" by 17".

In June 2003, we ran a survey around Sections 19 and 30, and found this monument. We took additional ties and established Kanabec County coordinates using GPS equipment.