

CERTIFICATE OF LOCATION OF GOVERNMENT CORNER

SOUTH QUARTER Corner of Section 20, Township 38, Range 24, 4TH P.M.

STATE OF MINNESOTA, County of KANABEC

At the corner location shown on the sketch:

FOUND THIS MONUMENT
AND ESTABLISHED G.P.S. COORDINATES ON ITS LOCATION.

Kanabec County U.S. Survey Feet Coordinates
NAD 1983, HARN 1996 Adjustment
Obtained by RTK GPS Observation

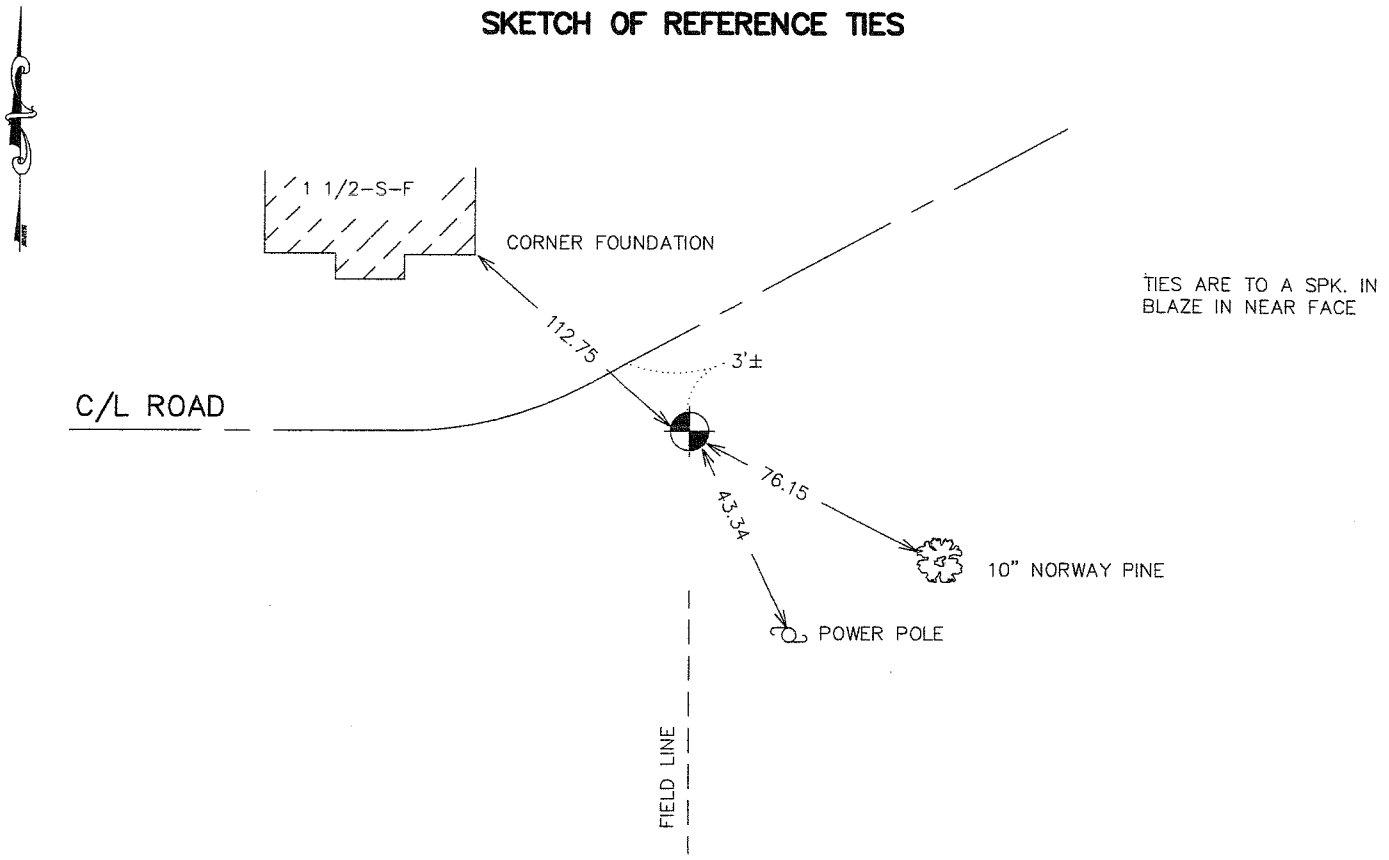
Northing= 111283.30

Easting= 382911.09

Note: NAD 1983, HARN 1996 Adjustment
coordinates are NOT compatible with
NAD 1983 coordinates

Note: 1 Meter=3937/1200 U.S. Survey Feet

SKETCH OF REFERENCE TIES



Statement of evidence relative to this corner location is on back of page.

I hereby certify that this document and the data contained herein was prepared by me or under my direct supervision.

[Signature] 5-02-2007
Signature Date

Registration No. Minn No 9808

Land Surveyor, Professional Engineer

County Surveyor, County Engineer

OFFICE OF THE COUNTY RECORDER

County of _____

I hereby certify that this document was filed in the County Recorder's office at _____ M. on the _____ day of _____ A.D., 20____

County Recorder _____

BY _____ Deputy

DOCUMENT NO. _____

SOUTH QUARTER CORNER SECTION 20, T38, R24

STATEMENT OF EVIDENCE

All of the original bearing trees are now gone.

There is no re-survey data on file for this corner.

On July 9, 1980, M.B. Rude made an excavation with the backhoe and at 1.5 feet below the surface found the base of the original quarter post which was very rotten and the soil was discolored around the post. It fits the line and split location within 4 feet.

A 2 3/4" by 19" cast iron monument was set to replace the post.

In April 2003 E.G. Rud and Sons established Kanabec County Coordinates on this position using G.P.S. equipment.