

CERTIFICATE OF LOCATION OF GOVERNMENT CORNER

EAST QUARTER Corner of Section 30, Township 38, Range 24, 4TH P.M.

STATE OF MINNESOTA, County of KANABEC

At the corner location shown on the sketch:
On 07/07/2004 Set a Kanabec County Aluminum Monument.

Kanabec County U.S. Survey Feet Coordinates
NAD 1983, HARN 1996 Adjustment
Obtained by RTK GPS Observation

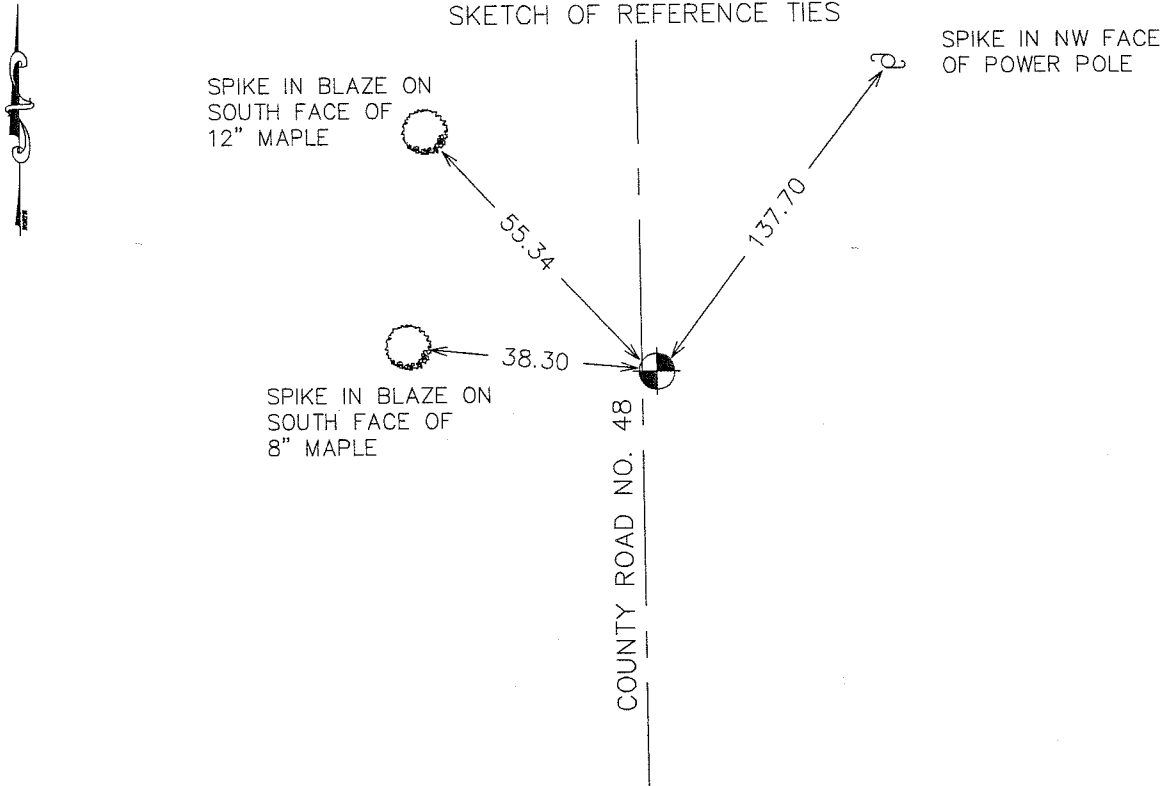
Northing= 108632.03

Easting= 380297.71

Note: NAD 1983, HARN 1996 Adjustment
coordinates are NOT compatible with
NAD 1983 coordinates

Note: 1 Meter=3937/1200 U.S. Survey Feet

SKETCH OF REFERENCE TIES



Statement of evidence relative to this corner location is on back of page.

I hereby certify that this document and the data contained herein was prepared by me or under my direct supervision.

Ernest Rud 1-23-2005
Signature Date

Registration No. Minn No 9808

Land Surveyor, Professional Engineer

County Surveyor, County Engineer

OFFICE OF THE COUNTY RECORDER

County of _____

I hereby certify that this document was filed in the County Recorder's office at _____ M. on the _____ day of _____ A.D., 20____

County Recorder _____

BY _____ Deputy

DOCUMENT NO. _____

STATEMENT OF EVIDENCE

The original corner was set by Deputy Surveyor Silas Barnard in August 1855. Evidence leading to the corner, or the original bearing trees no longer remain.

There is a record of a survey done by Charles Handschu in 1931 showing an iron pin at the East Quarter corner of Section 30. A tie to a 10" Maple in the Southwest quadrant of 54.5 feet is the same as Corner Certificate No. 40, filed by George Jenks in 1925.

In June 2003, we ran a survey around Section 19 and 30 to tie in lines of occupation and existing monuments.

By reconstructing Handschu's survey, we computed the distance from the Northeast corner of Section 30 to the East Quarter corner to be 2671.12 feet.

On July 7, 2004, we made an excavation with a backhoe 8'x12'x4', 1' into natural ground. At 2 feet deep, on centerline, we found a heavy metal rod. At 1 foot deep, west of centerline, we found a small spike with flagging.

No other evidence was found in the excavation.

The rod fit the tie \pm to the maple and measured 2671.10 to the Northeast corner of Section 30. We accepted this rod as being the one set by Handschu in 1931 and took ties and established Kanabec County coordinates on this position.