

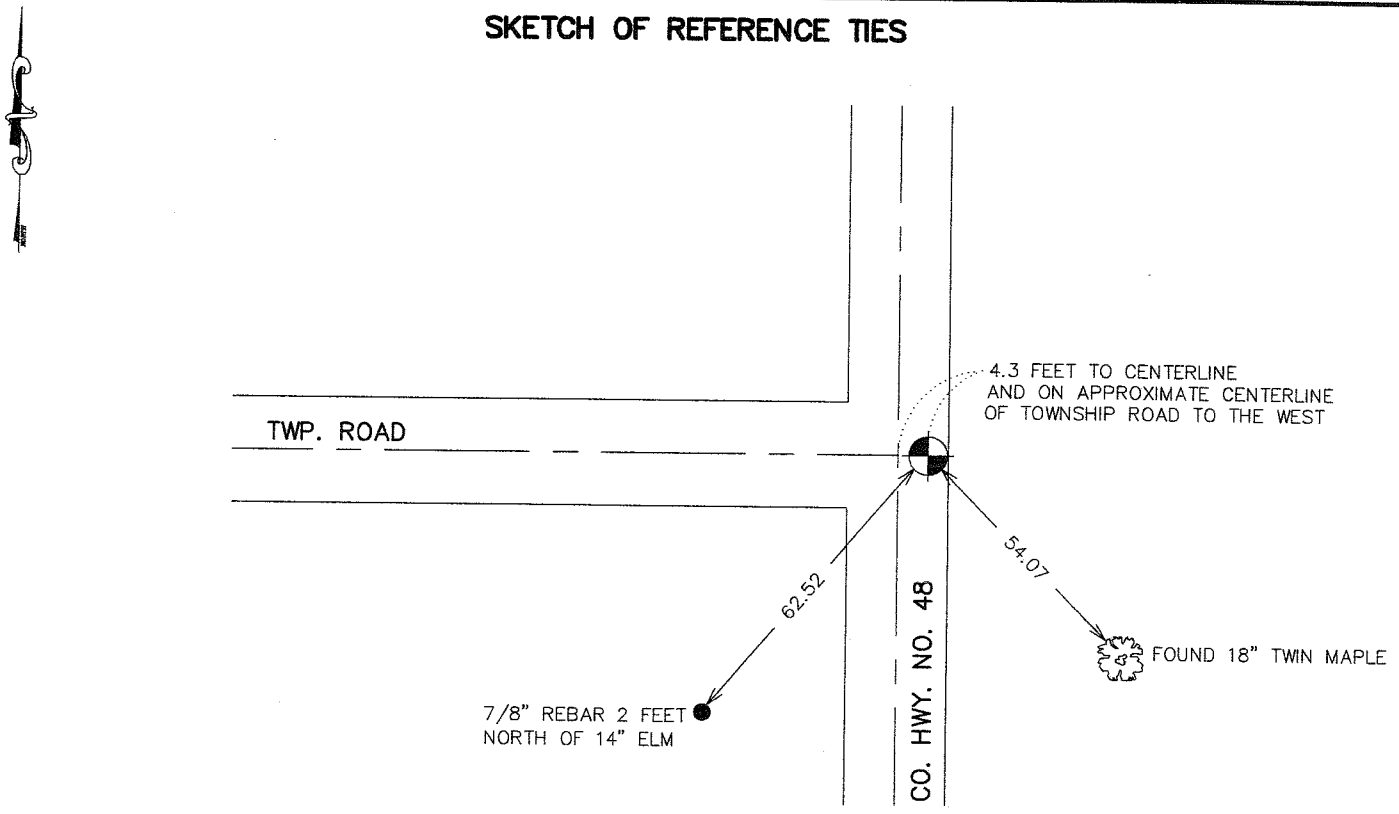
CERTIFICATE OF LOCATION OF GOVERNMENT CORNER

NORTH QUARTER Corner of Section 31, Township 38, Range 24, 4TH P.M.

STATE OF MINNESOTA, County of KANABEC

At the corner location shown on the sketch: FOUND THIS MONUMENT AND ESTABLISHED KANABEC COUNTY COORDINATES ON ITS LOCATION.	Kanabec County U.S. Survey Feet Coordinates NAD 1983, HARN 1996 Adjustment Obtained by RTK GPS Observation Northing= <u>105909.87</u> Easting= <u>377697.82</u> Note: NAD 1983, HARN 1996 Adjustment coordinates are NOT compatible with NAD 1983 coordinates Note: 1 Meter=3937/1200 U.S. Survey Feet
---	--

SKETCH OF REFERENCE TIES



Statement of evidence relative to this corner location is on back of page.

I hereby certify that this document and the data contained herein was prepared by me or under my direct supervision.

Ernest Blud 5-02-2007
 Signature Date

Registration No. Minn No 9808

Land Surveyor, Professional Engineer

County Surveyor, County Engineer

OFFICE OF THE COUNTY RECORDER

County of _____

I hereby certify that this document was filed in the County Recorder's office at _____ M. on the _____ day of _____ A.D., 20____

County Recorder _____

BY _____ Deputy

DOCUMENT NO. _____

NORTH QUARTER CORNER SECTION 31, T38, R24

STATEMENT OF EVIDENCE

ALL OF THE ORIGINAL BEARING TREES ARE NOW GONE.

IN 1925, GEORGE H. JENKS, THE COUNTY SURVEYOR, PLACED A STONE MARKED WITH A "+" AT THIS CORNER AND TOOK TWO NEW TIES. A BLAZED ELM AT THE SOUTHEAST, 31 FEET. THIS IS NOW GONE. AND A BLAZED HICKORY AT THE NORTHWEST, 48.3. THIS IS NOW GONE.

IN 1931, CHARLES HANDSHU MADE A SURVEY AROUND SECTION 30, FILED IN THE SURVEY RECORDS, BOOK A, PAGE 131. THIS SURVEY SHOWS A POST ON ROCK WITH NO TIES.

ON AUGUST 15, 1988, M.B. RUDE RAN A SURVEY AROUND SECTION 31 TO LOCATE THE EXISTING MONUMENTS, LINES OF OCCUPATION AND SEARCH AREAS. THIS CORNER FALLS AT THE INTERSECTION OF ROADS NORTH-SOUTH AND WEST.

ON AUGUST 18, 1988, M.B. RUDE MADE AN EXCAVATION WITH THE BACKHOE. AT 5 FEET BELOW THE SURFACE HE FOUND A 2" WELL POINT SET IN A PILE OF ROCKS. THIS AREA HAS BEEN FILLED WITH GRAVEL AND ROCKS. AT 8 FEET BELOW THE SURFACE AT THE BASE OF THE WELL POINT HE FOUND THE HOLE OF THE OLD POST IN BLACK DIRT WITH A LARGE STONE SET ON THE SOUTH SIDE OF THE POST HOLE.

HE SET A 2' BY 7/8" CAPPED REBAR TO REPLACE THE WELL POINT WHICH WAS FOUND ABOVE THE POST HOLE.

IN 2004 E.G. RUD AND SONS DID A SURVEY IN SECTION 30 AND RELOCATED THIS CORNER BY PULLING TWO OF THE REMAINING TIES. THIS POSITION FIT THE RESURVEYS BY HANDSCHU, M.B. RUDE AND PIONEER ENGINEERING. KANABEC COUNTY COORDINATES WERE ESTABLISHED USING G.P.S. EQUIPMENT.