

# CERTIFICATE OF LOCATION OF GOVERNMENT CORNER

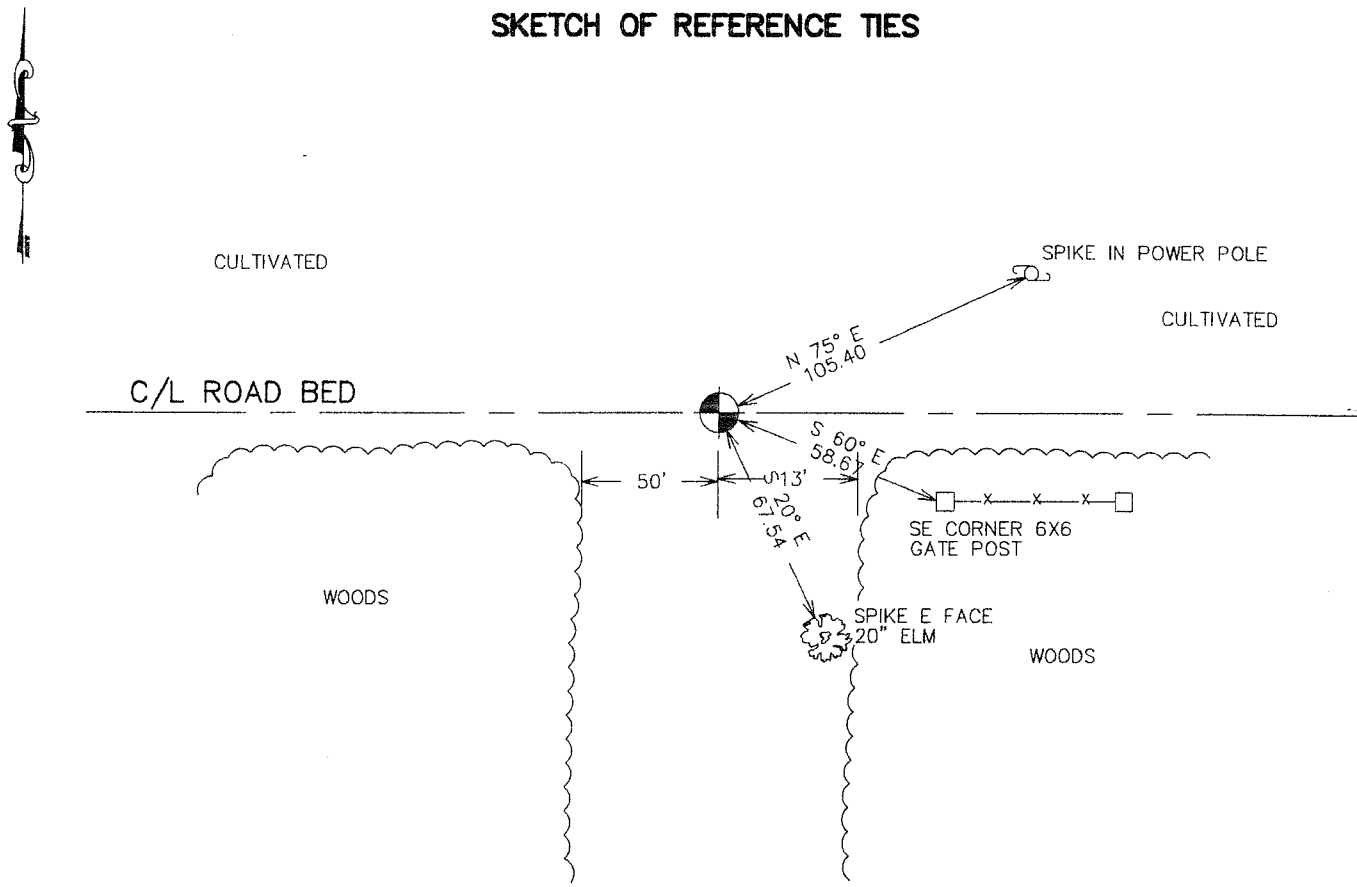
NORTH QUARTER Corner of Section 32, Township 38, Range 24, 4TH P.M.

STATE OF MINNESOTA, County of KANABEC

At the corner location shown on the sketch:  
FOUND THIS MONUMENT  
AND ESTABLISHED G.P.S. COORDINATES ON ITS LOCATION.

Kanabec County U.S. Survey Feet Coordinates  
NAD 1983, HARN 1996 Adjustment  
Obtained by RTK GPS Observation  
Northing= 105926.52  
Easting= 382900.42  
Note: NAD 1983, HARN 1996 Adjustment  
coordinates are NOT compatible with  
NAD 1983 coordinates  
Note: 1 Meter=3937/1200 U.S. Survey Feet

## SKETCH OF REFERENCE TIES



Statement of evidence relative to this corner location is on back of page.

I hereby certify that this document and the data contained herein was prepared by me or under my direct supervision.

*Ernest Rud* 1-08-2007  
Signature Date

Registration No. \_\_\_\_\_

Land Surveyor,  Professional Engineer

County Surveyor,  County Engineer

## OFFICE OF THE COUNTY RECORDER

County of \_\_\_\_\_

I hereby certify that this document was filed in the County Recorder's office at \_\_\_\_\_ M. on the \_\_\_\_\_ day of \_\_\_\_\_ A.D., 20\_\_\_\_

County Recorder \_\_\_\_\_

BY \_\_\_\_\_ Deputy

DOCUMENT NO. \_\_\_\_\_

NORTH QUARTER CORNER SECTION 32, T38, R24

**STATEMENT OF EVIDENCE**

THE ORIGINAL CORNER WAS SET BY DEPUTY SURVEYOR SILAS BARNARD IN JULY 1855. EVIDENCE TO THE ORIGINAL CORNER AND BEARING TREES NO LONGER REMAIN.

THERE IS A ROAD OPENING DATED NOVEMBER 9, 1901 FOR A ROAD FROM THIS CORNER EAST TO THE NORTHEAST CORNER OF SECTION 32. JOHN NELSON RAN A SURVEY ALONG THIS LINE AND RECORDED IT TO BE 39.47 CHAINS. (2605.02')

IN SEPTEMBER 1970 GERALD SULLIVAN FOUND A 1" X 18" IRON PIPE ON THE CENTERLINE OF A TOWNSHIP ROAD AND A FENCE LINE RUNNING SOUTH. AT THAT TIME GERALD SULLIVAN REPLACED THE ONE INCH IRON WITH A CAST IRON MONUMENT.

IN APRIL 2005 E.G. RUD AND SONS RAN A SURVEY AROUND SECTION 32 TO LOCATE EXISTING MONUMENTS AND LINES OF OCCUPATION.

THIS CAST IRON MONUMENT WAS LOCATED, NEW TIES TAKEN AND KANABEC COUNTY COORDINATES ESTABLISHED USING G.P.S. EQUIPMENT.