

# CERTIFICATE OF LOCATION OF GOVERNMENT CORNER

MEANDER CORNER On line Between 31&32, Township 38, Range 24, 4TH P.M.

STATE OF MINNESOTA, County of KANABEC

At the corner location shown on the sketch:

FOUND THIS MONUMENT  
AND ESTABLISHED G.P.S. COORDINATES ON ITS LOCATION.

Kanabec County U.S. Survey Feet Coordinates  
NAD 1983, HARN 1996 Adjustment  
Obtained by RTK GPS Observation

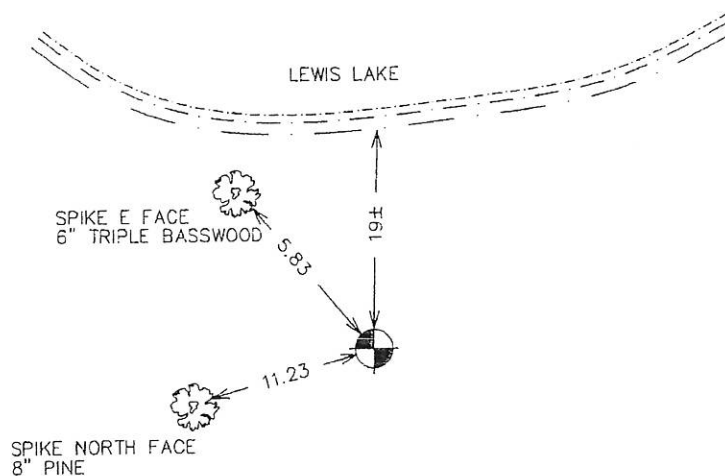
Northing= 104734.62

Easting= 380257.25

Note: NAD 1983, HARN 1996 Adjustment  
coordinates are NOT compatible with  
NAD 1983 coordinates

Note: 1 Meter=3937/1200 U.S. Survey Feet

## SKETCH OF REFERENCE TIES



Statement of evidence relative to this corner location is on back of page.

I hereby certify that this document and the data contained herein was prepared by me or under my direct supervision.

Ernest J. Rud  
Signature

1-08-2007  
Date

Registration No. Minn No 9808

☒ Land Surveyor, ☐ Professional Engineer

☐ County Surveyor, ☐ County Engineer

## OFFICE OF THE COUNTY RECORDER

County of \_\_\_\_\_

I hereby certify that this document was filed in the County Recorder's office at \_\_\_\_\_ M. on the

\_\_\_\_\_ day of \_\_\_\_\_ A.D., 20\_\_\_\_

County Recorder \_\_\_\_\_

BY \_\_\_\_\_ Deputy

DOCUMENT NO. \_\_\_\_\_

MEANDER CORNER ON LINE BETWEEN SECTIONS 31 & 32, T38, R24

**STATEMENT OF EVIDENCE**

IN SEPTEMBER 1970 GERALD SULLIVAN FOUND A 1" IRON PIPE TIED OUT BY ISANTI COUNTY HIGHWAY DEPARTMENT AND REPLACED THE IRON WITH A CAST IRON MONUMENT.

IN APRIL 2005 E.G. RUD RAN A SURVEY AROUND SECTION 32 TO LOCATE LINES OF OCCUPATION AND EXISTING MONUMENTATION.

THE CAST IRON MONUMENT WAS LOCATED NEW TIES TAKEN AND KANABEC COUNTY COORDINATES ESTABLISHED USING G.P.S. EQUIPMENT.

# CERTIFICATE OF LOCATION OF GOVERNMENT CORNER

North M.C.  
on Lewis Lake Corner of Section 29420, Township 38, Range 24, 4th P.M.

STATE OF MINNESOTA, County of KANABEC

At the corner location shown on the sketch:

*Found a rebar at NE cor  
 of Gov't Lot 1, Sec 30  
 T38, R24. Placed aluminum  
 cap on top.*

Kanabec County U.S. Survey Feet Coordinates  
 NAD 1983, HARN 1996 Adjustment  
 Obtained by RTK GPS Observation

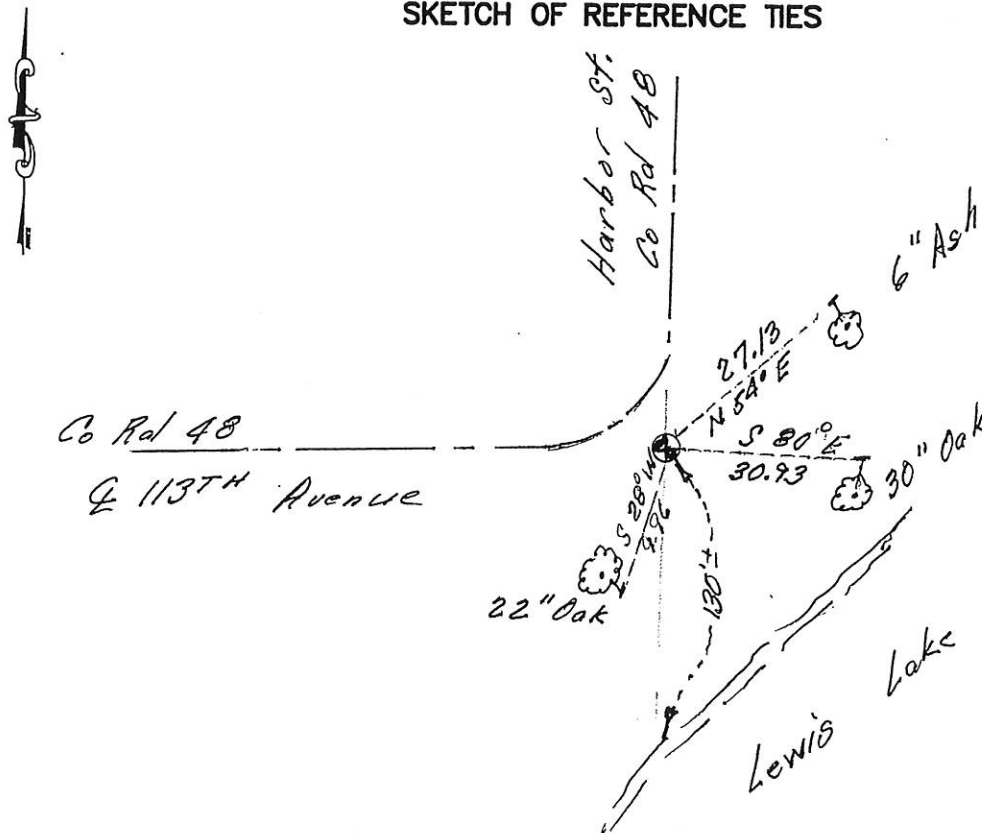
Northing= 107297.58

Easting= 380299.97

Note: NAD 1983, HARN 1996 Adjustment  
 coordinates are NOT compatible with  
 NAD 1983 coordinates

Note: 1 Meter=3937/1200 U.S. Survey Feet

## SKETCH OF REFERENCE TIES



Statement of evidence relative to this corner location is on back of page.

I hereby certify that this document and the data  
 contained herein was prepared by me or under  
 my direct supervision.

Ernest L. Bud  
 Signature

4-04-15  
 Date

Registration No. 9808

☒ Land Surveyor, ☐ Professional Engineer

☐ County Surveyor, ☐ County Engineer

## OFFICE OF THE COUNTY RECORDER

County of \_\_\_\_\_

I hereby certify that this document was filed in  
 the County Recorder's office at \_\_\_\_\_ M. on the

\_\_\_\_\_ day of \_\_\_\_\_ A.D., 20\_\_\_\_

County Recorder \_\_\_\_\_

BY \_\_\_\_\_ Deputy

DOCUMENT NO. \_\_\_\_\_

## STATEMENT OF EVIDENCE

## Meander Corner between Sections 29 &amp; 30, Township 38, Range 24

The original corner was set by Deputy Surveyor Syllas Barnard on August 5, 1855. His notes do not state what was set and no ties were recorded. We couldn't find any records of surveys that had used this corner. The meander line was computed by starting at the meander corner between Sections 31 & 32. This was a cast iron monument set by Gerald Sullivan in 1970 to replace an iron pipe set by Isanti County. The computed meander line fit the present shoreline in Sections 30, 31, and most of 32. In Section 29 there must have been a bust in one of the angles as the shoreline is 500-600 feet different than the meander line shown. In January 2015 doing a survey in the southeast quarter of Section 30 we searched for evidence for this meander corner and could not find the original corner. Government chainage puts this location on a peninsula that appears to have been created by adjoining property owner. No occupation lines could be found. There is a County Road running along the East side of north half of southeast quarter of Section 30 and east line of northeast quarter of Section 30.

In 1965 Art Miller RLS 2719 platted a portion of Government Lot 1 in Section 29 as Kay Mar Shores. His description begin at the northeast corner of Government Lot 1, of Section 30. He noted this on his plat and showed a symbol for a monument. We located monuments in Block 1, and tied in a rebar at northeast corner of Government Lot 1, Section 30. These monuments were in on acceptable line to the east quarter corner of Section 30 so we accepted a line drawn from the east quarter corner of Section 30 through the rebar at the northeast corner of Government Lot 1, Section 30 to be the section line between the south half of Section 29 and 30. This rebar is only 130 +/- feet north of the shoreline of Lewis Lake so no meander corner was set on the edge of the lake. Ties were taken to the rebar and Kanabec County Coordinates established on this position.

# CERTIFICATE OF LOCATION OF GOVERNMENT CORNER

Meander Corner of Section 30 & 31, Township 38, Range 24, 4th P.M.

STATE OF MINNESOTA, County of KANABEC

At the corner location shown on the sketch:

*Set a 1/2" x 4' iron pipe with  
aluminum cap on top*

Kanabec County U.S. Survey Feet Coordinates  
NAD 1983, HARN 1996 Adjustment  
Obtained by RTK GPS Observation

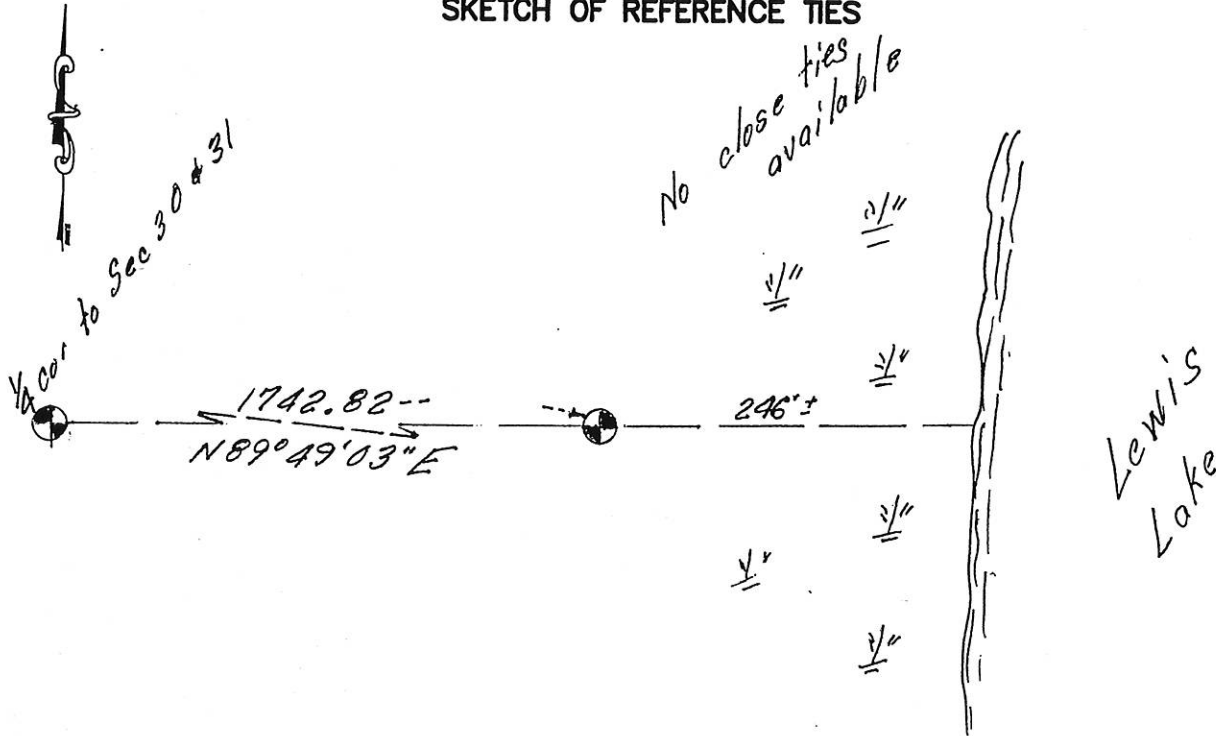
Northing= 105915.42

Easting= 379440.63

Note: NAD 1983, HARN 1996 Adjustment  
coordinates are NOT compatible with  
NAD 1983 coordinates

Note: 1 Meter=3937/1200 U.S. Survey Feet

## SKETCH OF REFERENCE TIES



Statement of evidence relative to this corner location is on back of page.

I hereby certify that this document and the data contained herein was prepared by me or under my direct supervision.

Ernest L. Rud  
Signature

4-4-2015  
Date

Registration No. 9808

☒ Land Surveyor, ☐ Professional Engineer

☐ County Surveyor, ☐ County Engineer

## OFFICE OF THE COUNTY RECORDER

County of \_\_\_\_\_

I hereby certify that this document was filed in the County Recorder's office at \_\_\_\_\_ M. on the

\_\_\_\_\_ day of \_\_\_\_\_ A.D., 20\_\_

County Recorder \_\_\_\_\_

BY \_\_\_\_\_ Deputy

DOCUMENT NO.

## Statement of Evidence

## Meander Corner between Sections 30 and 31 Township 38, Range 24.

The original corner was set by Deputy Surveyor Silas Barnard on August 05, 1855. His notes doesn't state what was set and no ties were recorded. We could not find any records of surveys that had used this corner. The meander line was computed by starting at the meander corner between Sections 31 and 32. This was a cast iron monument by Gerald Sullivan in 1970 to replace an iron pipe set by Isanti County. The computed meander line fit the present shoreline in Sections 30, 31 and most of 32. In Section 29 there must have been a bust in one of the angles as the shoreline is 500 - 600 feet different than the meander line shown. In January 2015 in doing a survey in the southeast quarter of Sections 30 we searched for evidence for this meander corner and could not find the original corner. We found three different types of irons of the edge of the lake. According to government change in original survey this meander corner would fall 38 feet in the lake. We located the irons in place and set the meander corner on line between the south quarter of Section 30 and the north quarter corner of Section 32. This fell 1.7' south of the two irons on the lake. This line only deflected on  $0^{\circ}03'39''$  from the south line of the south west quarter of the section 30. A 4 foot long pipe with Kanabec County Aluminum cap on top was set. No close ties were available and we established Kanabec County Coordinates on this position.

# CERTIFICATE OF LOCATION OF GOVERNMENT CORNER

East Meander Corner of Section 29~~32~~, Township 38, Range 24, 4th P.M.

STATE OF MINNESOTA, County of KANABEC

At the corner location shown on the sketch:

*Found a 1/2" iron pipe 170 feet east of shore line of Lewis Lake on westerly extension of Township road.*

Kanabec County U.S. Survey Feet Coordinates  
NAD 1983, HARN 1996 Adjustment  
Obtained by RTK GPS Observation

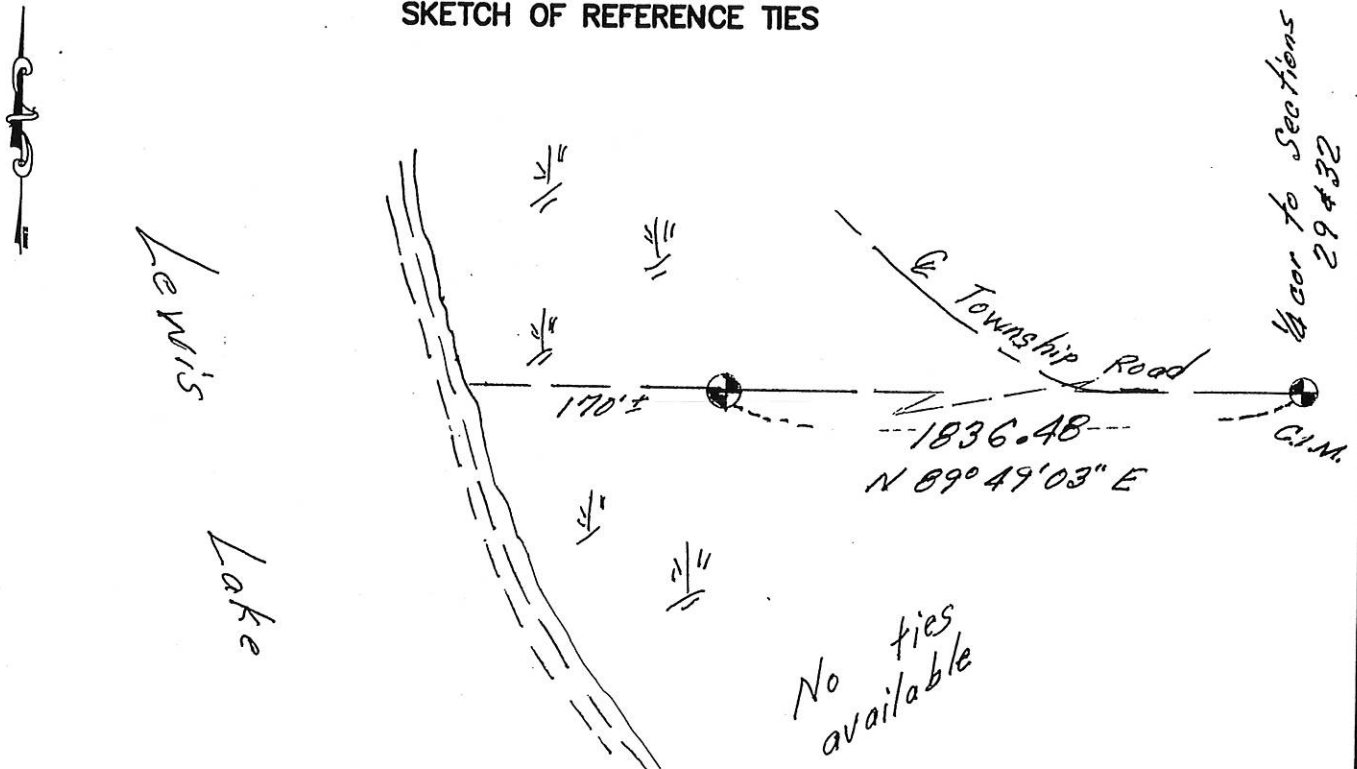
Northing= 105920.64

Easting= 381063.96

Note: NAD 1983, HARN 1996 Adjustment  
coordinates are NOT compatible with  
NAD 1983 coordinates

Note: 1 Meter=3937/1200 U.S. Survey Feet

## SKETCH OF REFERENCE TIES



Statement of evidence relative to this corner location is on back of page.

I hereby certify that this document and the data contained herein was prepared by me or under my direct supervision.

Ernest L. Rud  
Signature

4-4-2015  
Date

Registration No. 9808

☒ Land Surveyor, ☐ Professional Engineer

☐ County Surveyor, ☐ County Engineer

## OFFICE OF THE COUNTY RECORDER

County of \_\_\_\_\_

I hereby certify that this document was filed in the County Recorder's office at \_\_\_\_\_ M. on the

\_\_\_\_\_ day of \_\_\_\_\_ A.D., 20\_\_\_\_

County Recorder \_\_\_\_\_

BY \_\_\_\_\_ Deputy

DOCUMENT NO. \_\_\_\_\_

## Statement of Evidence

Meander Corner between Sections ~~31~~<sup>29</sup> and 32, Township 38, Range 24.

The original corner was set by Deputy Surveyor Silas Barnard on August 05, 1855. His notes doesn't state what was set and no ties were recorded. We could not find any records of surveys that had used this corner. The meander line was computed by starting at the meander corner between Sections 31 and 32. This was a cast iron monument by Gerald Sullivan in 1970 to replace an iron pipe set by Isanti County. The computed meander line fit the present shoreline in Sections 30, 31 and most of 32. In Section 29 there must have been a bust in one of the angles as the shoreline is 500 - 600 feet different than the meander line shown. In January 2015 in doing a survey in the southeast quarter of Section 30 we searched for evidence for this meander corner and could not find the original corner. Government change would put the corner 80 feet in the lake. A 1/2" iron pipe was found 170' ± east of the shoreline. The shoreline area is very flat and swampy so the iron pipe was only 1' above lake elevation. This pipe fit the westerly extension of centerline of the gravel road to the east. Therefore we accepted this pipe as best evidence for the location of the meander corner. Kanabec County Coordinates were established using G.P.S. methods. No ties were available.