

CERTIFICATE OF LOCATION OF GOVERNMENT CORNER

NORTH QUARTER Corner of Section 9, Township 38, Range 24, 4TH P.M.

STATE OF MINNESOTA, County of KANABEC

At the corner location shown on the sketch:
On 05/ /2004 Found a Kanabec County Monument.

Kanabec County U.S. Survey Feet Coordinates
NAD 1983, HARN 1996 Adjustment
Obtained by RTK GPS Observation

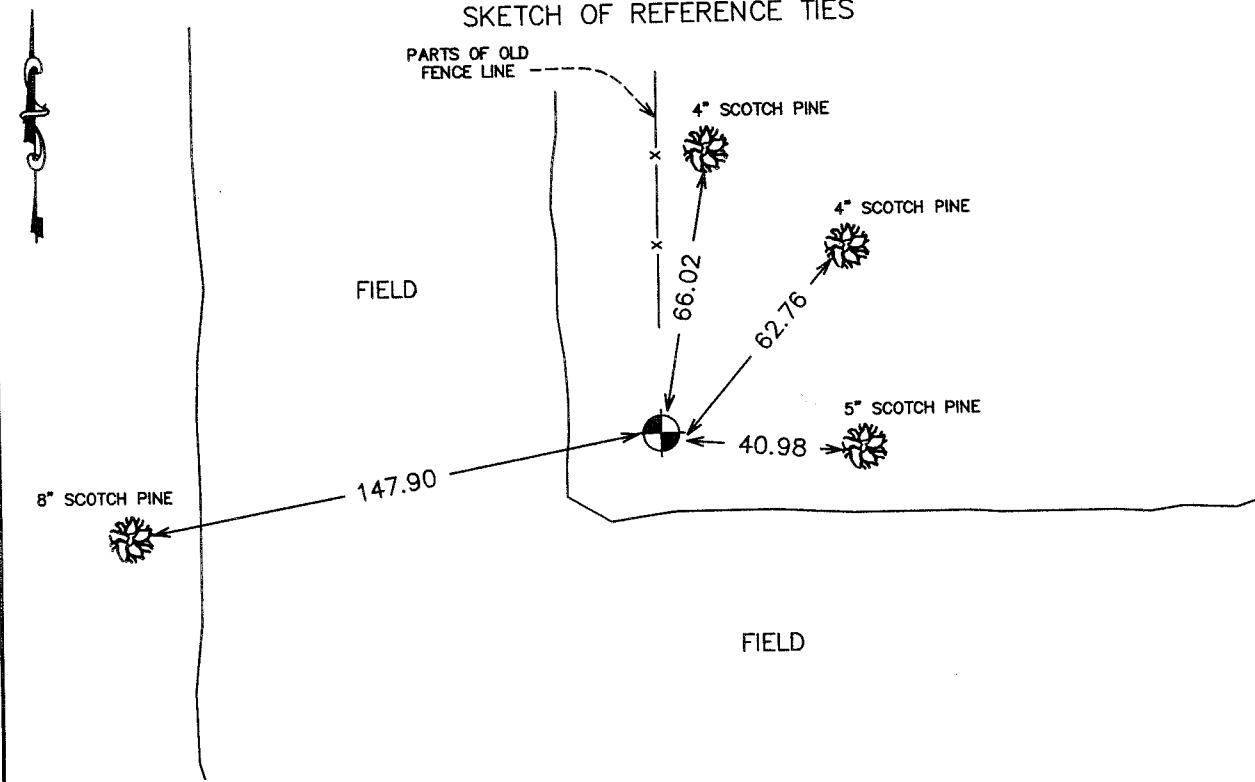
Northing= 127101.466

Easting= 388264.662

Note: NAD 1983, HARN 1996 Adjustment
coordinates are NOT compatible with
NAD 1983 coordinates

Note: 1 Meter=3937/1200 U.S. Survey Feet

SKETCH OF REFERENCE TIES



Statement of evidence relative to this corner location is on back of page.

I hereby certify that this document and the data contained herein was prepared by me or under my direct supervision.

Ernest J. Reed
Signature

6-22-04
Date

Registration No. 9808

Land Surveyor, [] Professional Engineer

[] County Surveyor, [] County Engineer

OFFICE OF THE COUNTY RECORDER

County of _____

I hereby certify that this document was filed in the County Recorder's office at _____ M. on the

_____ day of _____ A.D., 20____

County Recorder _____

BY _____ Deputy

DOCUMENT NO. _____

STATEMENT OF EVIDENCE
(FROM DALE ANDERSON)

All of the original bearing trees are now gone.

Records on file in the County Recorders office show that in 1910, county surveyor, John Nelson set a stone to mark this corner location in resurvey of Section 4. This stone was placed on line proportionally between the northeast and southeast corners.

In October of 1992, we ran a survey around Section 4 to locate existing monuments and lines of occupation.

In September of 2003, we made a hand excavation to search for Nelson's stone or other evidence of the corner location. This area fell on a north-south rock line. No evidence was found.

We set a 5/8"x24" rebar with aluminum cap midway between the southwest and southeast corners.

(2004)

In May 2004, E.G. Rud ran a survey around Sections 8, 9, 10, and 11. We found the monument set by Dale Anderson, and established Kanabec County Coordinates using G.P.S. equipment.