

CERTIFICATE OF LOCATION OF GOVERNMENT CORNER

EAST QUARTER Corner of Section 08, Township 38, Range 24, 4TH P.M.

STATE OF MINNESOTA, County of KANABEC

At the corner location shown on the sketch:
JULY 7, 2009 SET #7 REBAR W/ALUM. CAP
AND ESTABLISHED G.P.S. COORDINTES ON THE LOCATION.

Kanabec County U.S. Survey Feet Coordinates
NAD 1983, HARN 1996 Adjustment
Obtained by RTK GPS Observation

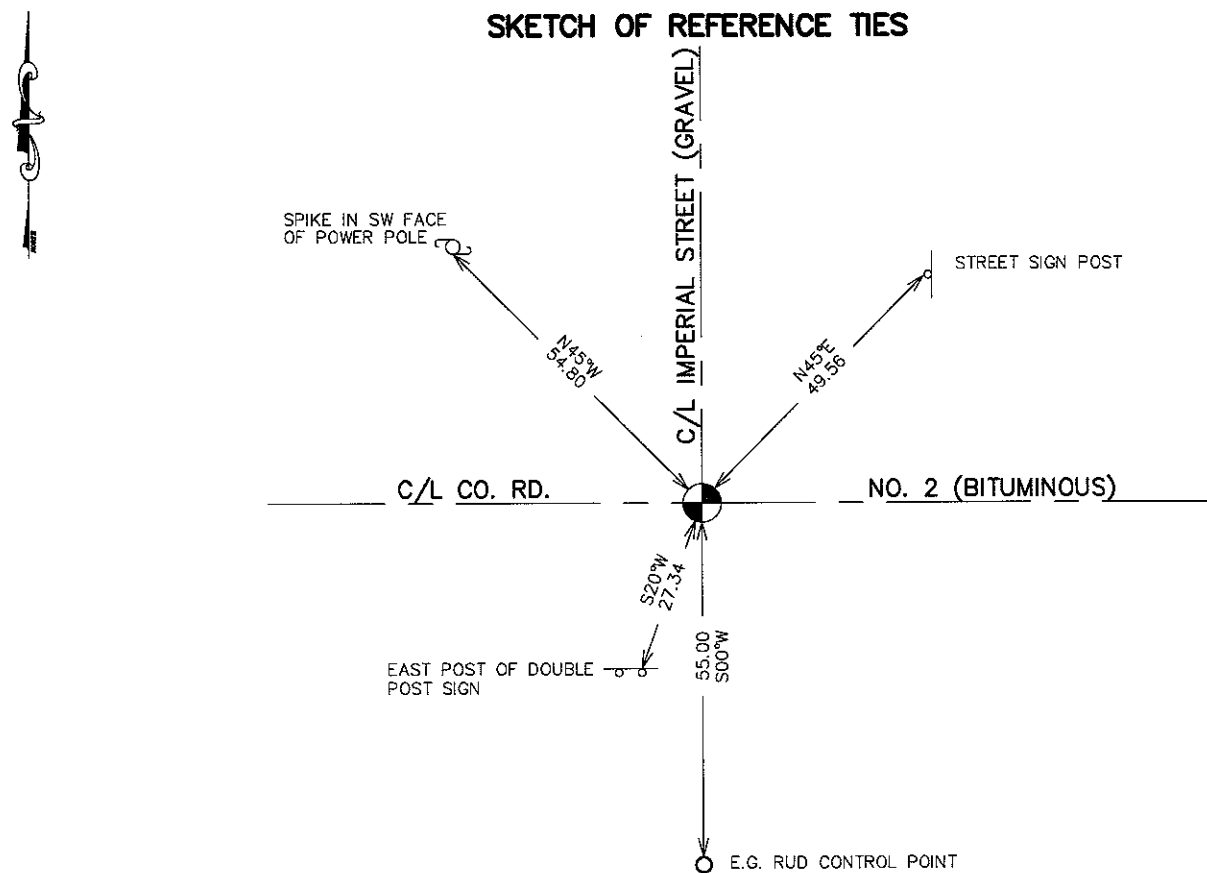
Northing= 124446.71

Easting= 385713.90

Note: NAD 1983, HARN 1996 Adjustment
coordinates are NOT compatible with
NAD 1983 coordinates

Note: 1 Meter=3937/1200 U.S. Survey Feet

SKETCH OF REFERENCE TIES



Statement of evidence relative to this corner location is on back of page.

I hereby certify that this document and the data contained herein was prepared by me or under my direct supervision.

Ernest D. Rud
Signature

2-02-2010
Date

Registration No. 9808

Land Surveyor, Professional Engineer

County Surveyor, County Engineer

OFFICE OF THE COUNTY RECORDER

County of _____

I hereby certify that this document was filed in the County Recorder's office at _____ M. on the _____ day of _____ A.D., 20____

County Recorder _____

BY _____ Deputy

DOCUMENT NO. _____

E 1/4 CORNER, SEC. 8, T.38, R.24

STATEMENT OF EVIDENCE:

THE ORIGINAL CORNER WAS SET BY DEPUTY SURVEYOR SILAS BARNARD IN AUGUST 1855 AND TWO BEARING TREES ESTABLISHED. NO EVIDENCE FOR THE CORNER OR BEARING TREES REMAIN.

IN APRIL 1910, JOHN NELSON RAN A SURVEY AROUND SECTION 9 AND SET A STONE WITH AN X CHISELED ON IT.

IN MAY 2004 WE DID A SURVEY AROUND SECTION 4, 5, 8, AND 9 TO TIE IN EXISTING MONUMENTATION AND LINES OF OCCUPATION.

ON JUNE 30, 2004 WE MADE AN EXCAVATION ON THE CENTERLINE OF COUNTY ROAD 20 AND THE CENTERLINE OF A TOWNSHIP ROAD GOING NORTH. THIS EXCAVATION WAS 2' BY 16' AND 1 FOOT INTO NATURAL GROUND AT 2 FEET DOWN WE FOUND A BOAT SPIKE. WE TIED THIS OUT AND CONTINUED EXCAVATING. DIRECTLY UNDER THE BOAT SPIKE WE FOUND ANOTHER SOLID ROD WITH A WOOD HUB. AT 4 FEET DOWN WE FOUND A 6" BY 9" SANDSTONE WITH 1/4 S CHISELED ON TOP. THIS IS WHAT JOHN NELSON WROTE IN HIS NOTES. WE REPLACED THE STONE WITH A KANABEC COUNTY MONUMENT AND ESTABLISHED KANABEC COUNTY COORDINATES ON THIS POSITION.

ON JULY 7, 2009, E.G. RUD AND SONS SET A #7 REBAR WITH AN ALUMINUM CAP AT THIS LOCATION AN NEW TIES WERE TAKEN.