

CERTIFICATE OF LOCATION OF GOVERNMENT CORNER

NORTHEAST Corner of Section 17, Township 38, Range 24, 4TH P.M.
 STATE OF MINNESOTA, County of KANABEC

At the corner location shown on the sketch:
 On 07/09/2002 Set a # 7 rebar, aluminum cap over sandstone.

Kanabec County U.S. Survey Feet Coordinates
 NAD 1983, HARN 1996 Adjustment
 Obtained by RTK GPS Observation

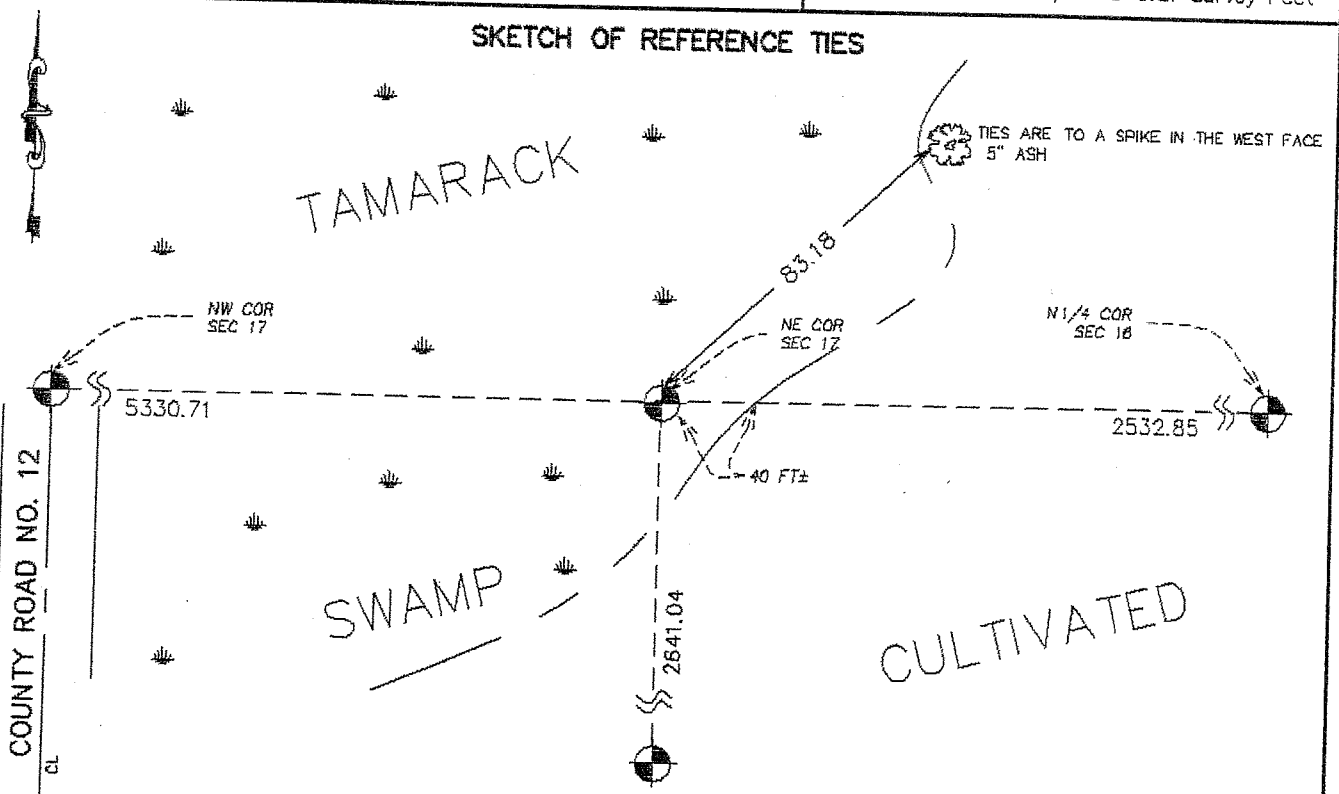
Northing= 121827.617

Easting= 385698.397

Note: NAD 1983, HARN 1996 Adjustment
 coordinates are NOT compatible with
 NAD 1983 coordinates

Note: 1 Meter=39.37/1200 U.S. Survey Feet

SKETCH OF REFERENCE TIES



Statement of evidence relative to this corner location is on back of page.

I hereby certify that this document and the data contained herein was prepared by me or under my direct supervision.

Ernest J. Reed
 Signature

8-08-2003
 Date

Registration No. 9808

- Land Surveyor, Professional Engineer
 County Surveyor, County Engineer

OFFICE OF THE COUNTY RECORDER

County of _____
 I hereby certify that this document was filed in the County Recorder's office at _____ M. on the _____ day of _____ A.D., 20____

County Recorder _____
 BY _____ Deputy

DOCUMENT NO. _____

STATEMENT OF EVIDENCE

Original corner was set in July 1855 by Silas Bernard.

No original bearing trees remain.

In April 1911 John Nelson did a survey in Section 16 and stated he found Government corner in good condition.

In 1919 Norm Swenson (land owner in Section 17) ran Section lines around Section 17. Notes do not indicate he found original corner.

In 2001 E.G. Rud located stones at the Northeast corner, East Quarter, and Southeast corner of Section 17 with chiseled "X" on top.

At Northeast corner we also found a pointed wood stake along sandstone monument.

Distances agree with Nelsons and Swensons measurements.

We left sandstone and set #7 rebar with aluminum cap over top.

In March 2002 we established Kanabec County Coordinates on said monument using G.P.S. equipment.