

CERTIFICATE OF LOCATION OF GOVERNMENT CORNER

EAST QUARTER Corner of Section 17, Township 38, Range 24, 4TH P.M.
STATE OF MINNESOTA, County of KANABEC

At the corner location shown on the sketch:
On 11/30/2000 Set a Kanabec County Monument over a 10 inch by 2 ft. Sandstone Monument with an "X", 1 +/- ft. above water.

Kanabec County U.S. Survey Feet Coordinates
NAD 1983, HARN 1996 Adjustment
Obtained by RTK GPS Observation

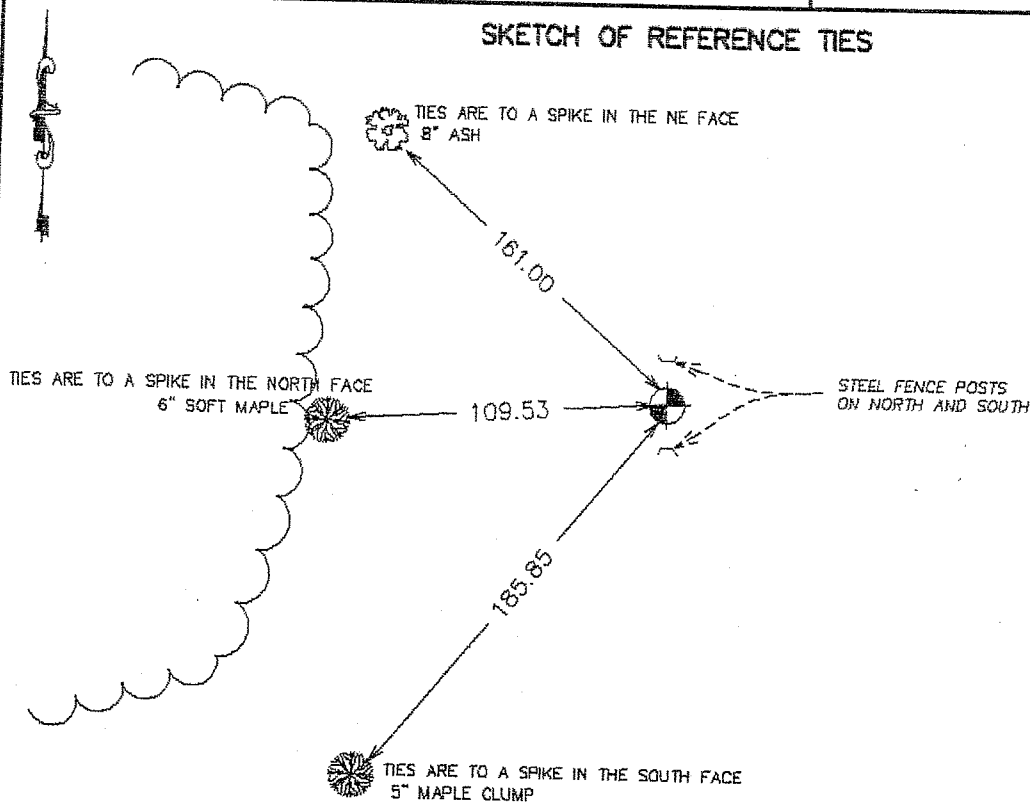
Northing= 119187.282

Easting= 385637.225

Note: NAD 1983, HARN 1996 Adjustment coordinates are NOT compatible with NAD 1983 coordinates

Note: 1 Meter=3937/1200 U.S. Survey Feet

SKETCH OF REFERENCE TIES



Statement of evidence relative to this corner location is on back of page.

I hereby certify that this document and the data contained herein was prepared by me or under my direct supervision.

Ernest Alud
Signature

7-22-2003
Date

Registration No. 9808

- Land Surveyor, Professional Engineer
- County Surveyor, County Engineer

OFFICE OF THE COUNTY RECORDER

County of _____

I hereby certify that this document was filed in the County Recorder's office at _____ M. on the _____ day of _____ A.D., 20 _____

County Recorder _____

BY _____ Deputy

DOCUMENT NO. _____

STATEMENT OF EVIDENCE

Original corner and ties are gone.

On April 6, 1911 John Nelson did a survey of Section 16 (Book A, Page 191) and set a sandstone monument at this Quarter corner.

In 1919 Norm Swenson located this stone when doing a survey of Section 17. Fred Swenson (Norm's son) found this stone again in 1984 and directed us to its location.

We set a Kanabec County Monument over this stone, took ties and included in our survey of Section 17. Distance from East Quarter corner to Southeast corner was within 2 feet of John Nelsons measurement in 1911.

In March 2002 we established Kanabec County coordinates on this corner.