

CERTIFICATE OF LOCATION OF GOVERNMENT CORNER

WEST QUARTER Corner of Section 21, Township 38, Range 24, 4TH P.M.
STATE OF MINNESOTA, County of KANABEC

At the corner location shown on the sketch:
On 3/18/2002 Set a KANABEC COUNTY MONUMENT.
On top of fence post in swamp.

Kanabec County U.S. Survey Feet Coordinates
NAD 1983, HARN 1996 Adjustment
Obtained by RTK GPS Observation

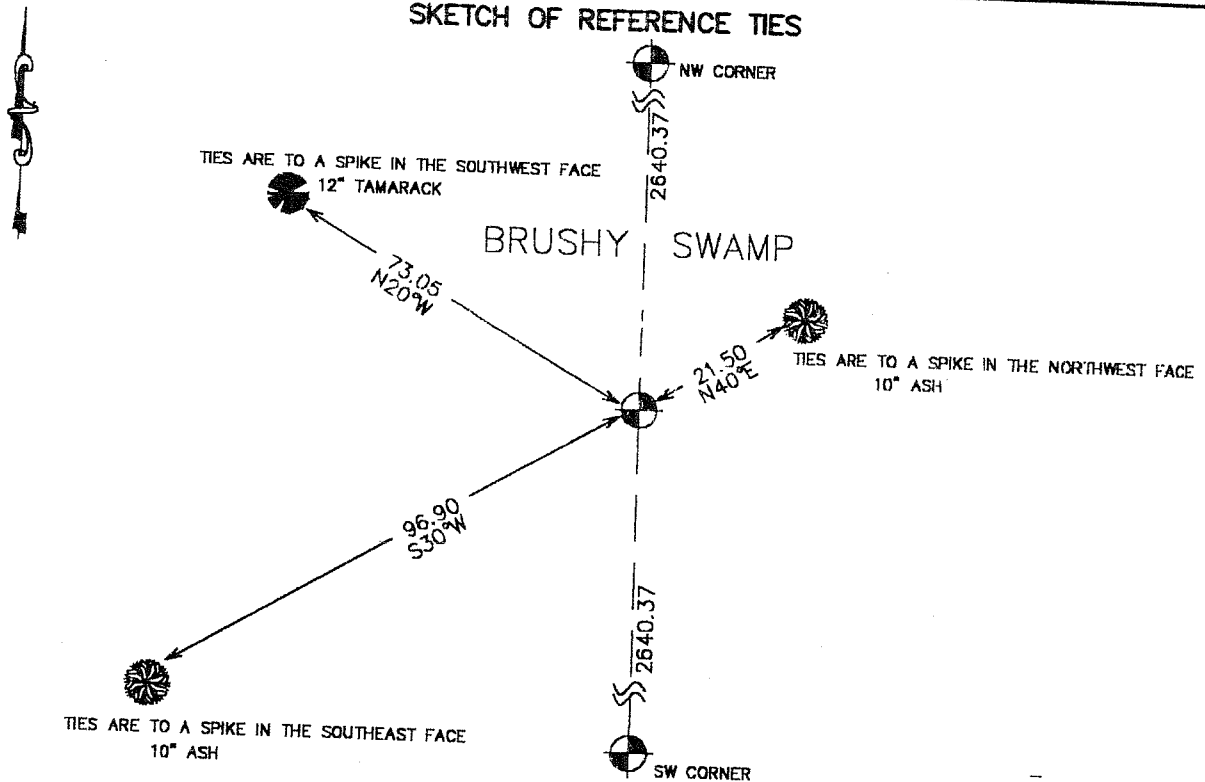
Northing= 113903.5300

Easting= 385544.6500

Note: NAD 1983, HARN 1996 Adjustment
coordinates are NOT compatible with
NAD 1983 coordinates

Note: 1 Meter=3937/1200 U.S. Survey Feet

SKETCH OF REFERENCE TIES



Statement of evidence relative to this corner location is on back of page.

I hereby certify that this document and the data contained herein was prepared by me or under my direct supervision.

Ernest J. Rud 11-25-2002
Signature Date

Registration No. 9808

- Land Surveyor, Professional Engineer
- County Surveyor, County Engineer

OFFICE OF THE COUNTY RECORDER

County of _____
I hereby certify that this document was filed in the County Recorder's office at _____ M. on the _____ day of _____ A.D., 20____

County Recorder _____
BY _____ Deputy

DOCUMENT NO. _____

STATEMENT OF EVIDENCE

Original corner was set in July 1855 by Silas Barnard.

Original bearing trees are all gone. No records of surveys along this line after the original G.L.O..

In March 2002 we did a survey around Sections 21 and 22. No occupation lines are evident at this corner. Landowners that we contacted had no recollection of the corner location.

Therefore we set the West Quarter corner on line and equidistant from the Northwest and Southwest corners of Section 21.