

# CERTIFICATE OF LOCATION OF GOVERNMENT CORNER

SOUTH QUARTER Corner of Section 21, Township 38, Range 24, 4TH P.M.

STATE OF MINNESOTA, County of KANABEC

At the corner location shown on the sketch:  
On 05/03/2002 Set a KANABEC COUNTY MONUMENT.

Kanabec County U.S. Survey Feet Coordinates  
NAD 1983, HARN 1996 Adjustment  
Obtained by RTK GPS Observation

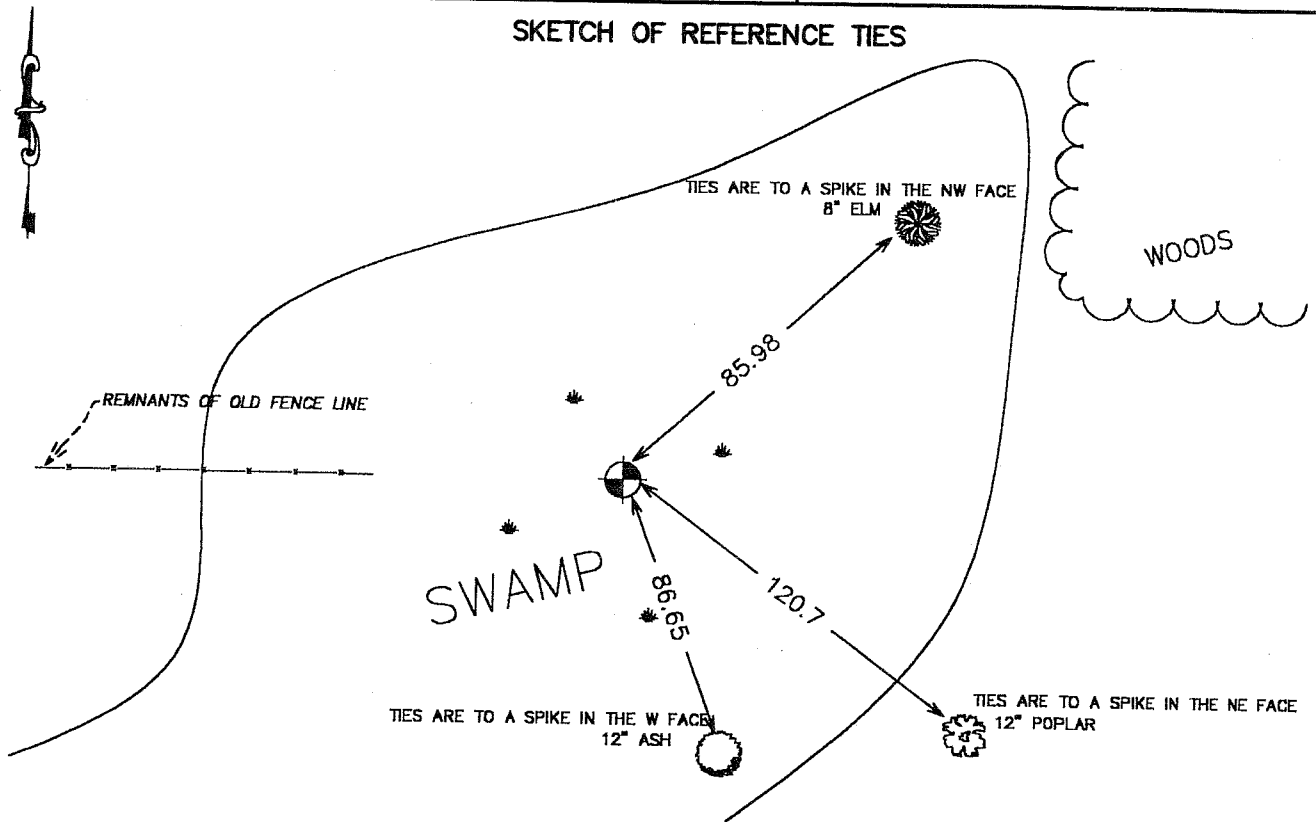
Northing= 111261.025

Easting= 388122.34

Note: NAD 1983, HARN 1996 Adjustment  
coordinates are NOT compatible with  
NAD 1983 coordinates

Note: 1 Meter=3937/1200 U.S. Survey Feet

## SKETCH OF REFERENCE TIES



Statement of evidence relative to this corner location is on back of page.

I hereby certify that this document and the data contained herein was prepared by me or under my direct supervision.

*Ernest J. Reed*  
Signature

1-03-03  
Date

Registration No. 9808

- Land Surveyor,     Professional Engineer  
 County Surveyor,     County Engineer

### OFFICE OF THE COUNTY RECORDER

County of \_\_\_\_\_

I hereby certify that this document was filed in the County Recorder's office at \_\_\_\_\_ M. on the \_\_\_\_\_ day of \_\_\_\_\_ A.D., 20\_\_\_\_

County Recorder \_\_\_\_\_

BY \_\_\_\_\_ Deputy

DOCUMENT NO. \_\_\_\_\_

## STATEMENT OF EVIDENCE

Original corner was set in July 1855 by Silas Barnard. Original bearing trees are all gone.

In 1925 George Jenks did a survey of Section 28 and Survey records indicate he set a stone of this corner.

On March 7, 2002 we did a survey of Sections 21 and 22 tying in existing monuments, occupation lines and set control points.

From our measurements and computations we set a location for this corner on the extension of an old East-West fence and doubled over the 40 foot distance from the west. On May 3, 2002 we hand excavated and probed an area 6 feet North-South by 15 feet East-West. We uncovered an old fence post with barbed wire and nearby we found a 12 inch stone with a chiseled (X) on top. This fit the doubled over distance within 6 feet and fell on extension of old fence line. We set a Kanabec County Monument and took ties along with establishing County Coordinates on this Section Corner.