

CERTIFICATE OF LOCATION OF GOVERNMENT CORNER

NORTH QUARTER Corner of Section 33, Township 38, Range 24, 4TH P.M.
 STATE OF MINNESOTA, County of KANABEC

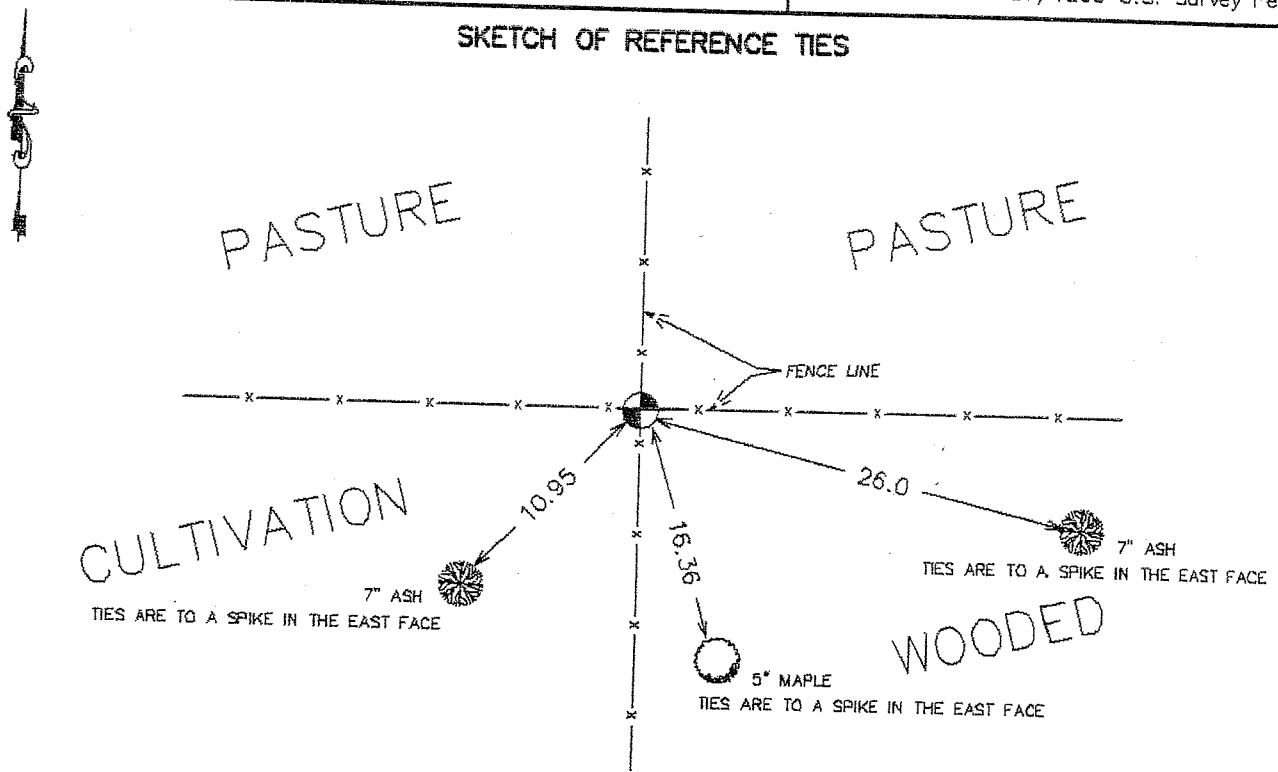
At the corner location shown on the sketch:
 On 04/10/2003 Set a Kanabec County Monument.

Kanabec County U.S. Survey Feet Coordinates
 NAD 1983, HARN 1996 Adjustment
 Obtained by RTK GPS Observation

Northing= 105944.218
 Easting= 388146.675

Note: NAD 1983, HARN 1996 Adjustment
 coordinates are NOT compatible with
 NAD 1983 coordinates
 Note: 1 Meter=3937/1200 U.S. Survey Feet

SKETCH OF REFERENCE TIES



Statement of evidence relative to this corner location is on back of page.

I hereby certify that this document and the data contained herein was prepared by me or under my direct supervision.

Ernest J. Rud 7-22-2003
 Signature Date

Registration No. 9800

Land Surveyor, Professional Engineer
 County Surveyor, County Engineer

OFFICE OF THE COUNTY RECORDER

County of _____
 I hereby certify that this document was filed in the County Recorder's office at _____ M. on the _____ day of _____ A.D., 20____

County Recorder _____
 BY _____ Deputy

DOCUMENT NO. _____

STATEMENT OF EVIDENCE

Original Government corner set by silas Barnard in July 1855.

No evidence of corner or bearing trees remain.

In March 1923 George Jenks did a survey of Section 28 and set a stone with a marked "X" on it. In February 2003 we did a survey of Section 27, 28, 33, and 34 locating monuments and tying in occupation lines.

On April 10, 2003 we hand excavated at the fence line intersection and found a stone with a marked "X". We replaced stone with a Kanabec County Monument and established Kanabec County coordinates on the monument.

Stone was found at the intersection of fences (by corner post) set by Jenks in 1923.