

CERTIFICATE OF LOCATION OF GOVERNMENT CORNER

NORTHEAST Corner of Section 32, Township 38, Range 24, 4TH P.M.
 STATE OF MINNESOTA, County of KANABEC

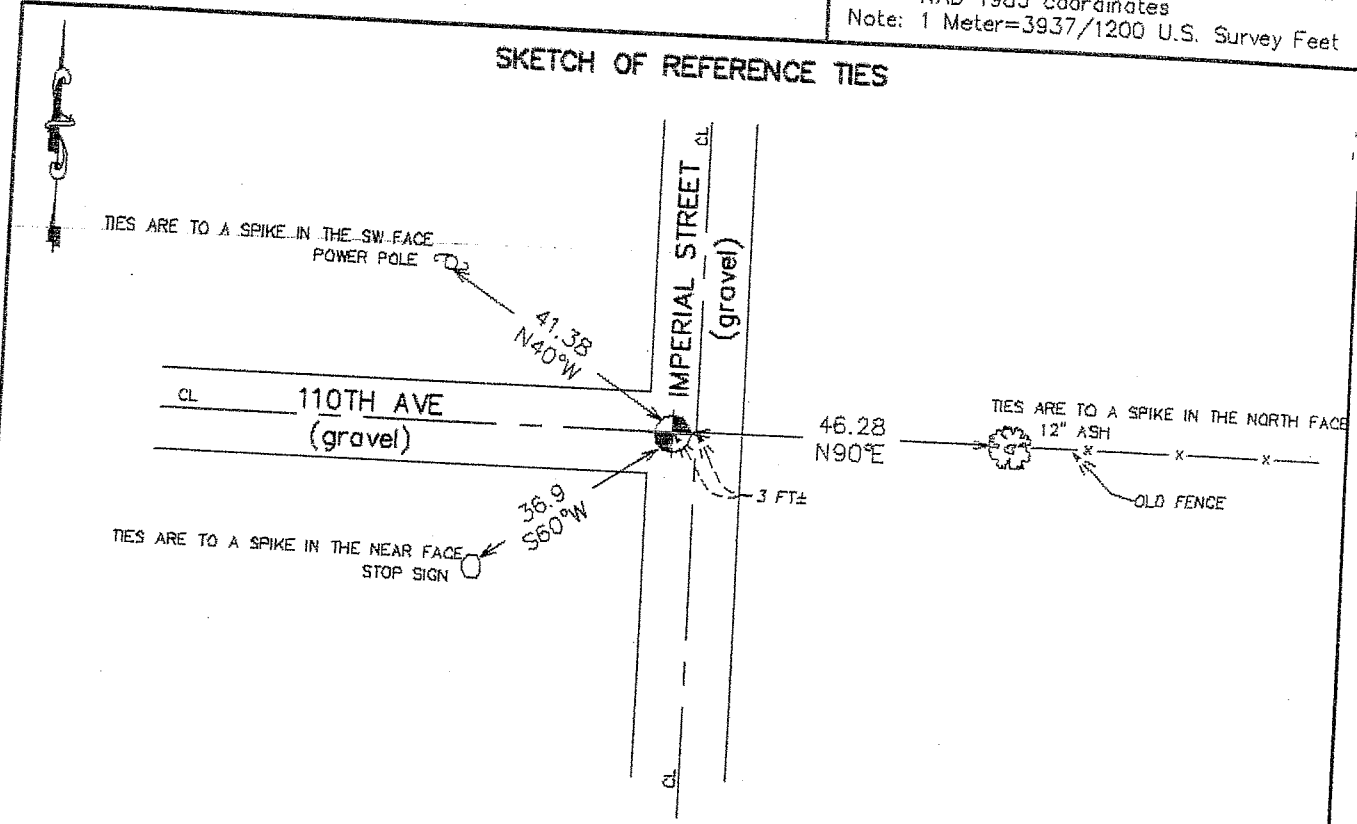
At the corner location shown on the sketch:
 On 06/05/2003 Set a Aluminum cap over Cast Iron Monument.

Kanabec County U.S. Survey Feet Coordinates
 NAD 1983, HARN 1996 Adjustment
 Obtained by RTK GPS Observation

Northing= 105926.803
 Easting= 385522.968

Note: NAD 1983, HARN 1996 Adjustment
 coordinates are NOT compatible with
 NAD 1983 coordinates
 Note: 1 Meter=39.37/1200 U.S. Survey Feet

SKETCH OF REFERENCE TIES



Statement of evidence relative to this corner location is on back of page.

I hereby certify that this document and the data contained herein was prepared by me or under my direct supervision.

Ernest J. Reed
 Signature

7-08-2003
 Date

Registration No. 9808

- Land Surveyor, Professional Engineer
 County Surveyor, County Engineer

OFFICE OF THE COUNTY RECORDER

County of _____
 I hereby certify that this document was filed in
 the County Recorder's office at _____ M. on the
 _____ day of _____ A.D., 20____

County Recorder _____
 BY _____ Deputy

DOCUMENT NO. _____

STATEMENT OF EVIDENCE

Original corner set by Silas Barnard in July 1855.

Evidence of original corner and bearing trees no longer remain.

Records of Kanabec County show that George Jenks surveyed Section 28 in August 1925. His notes indicate he set a stone with an "X" for this corner and took 3 ties. These ties no longer remain.

In April 2003 we surveyed around Sections 27, 28, 33, and 34 to tie in land corners and occupation lines. At that time we found a cast iron monument ~~was~~ down 1 foot.

On June 5, 2003 we excavated at this location 8 feet east-west and 16 feet north-south down into natural ground 18 inches. Found no stone. We accepted the cast iron monument as the best evidence as to the location of this corner. Set #7 rebar with aluminum cap, took ties and established Kanabec County coordinates on this corner. Subsequent research revealed that Gerald Sullivan had set the cast iron monument in 1970.