

CERTIFICATE OF LOCATION OF GOVERNMENT CORNER

EAST QUARTER Corner of Section 32, Township 38, Range 24, 4TH P.M.

STATE OF MINNESOTA, County of KANABEC

At the corner location shown on the sketch:
On 06/05/2003 Set a #7 rebar with Kanabec County Aluminum cap.

Kanabec County U.S. Survey Feet Coordinates
NAD 1983, HARN 1996 Adjustment
Obtained by RTK GPS Observation

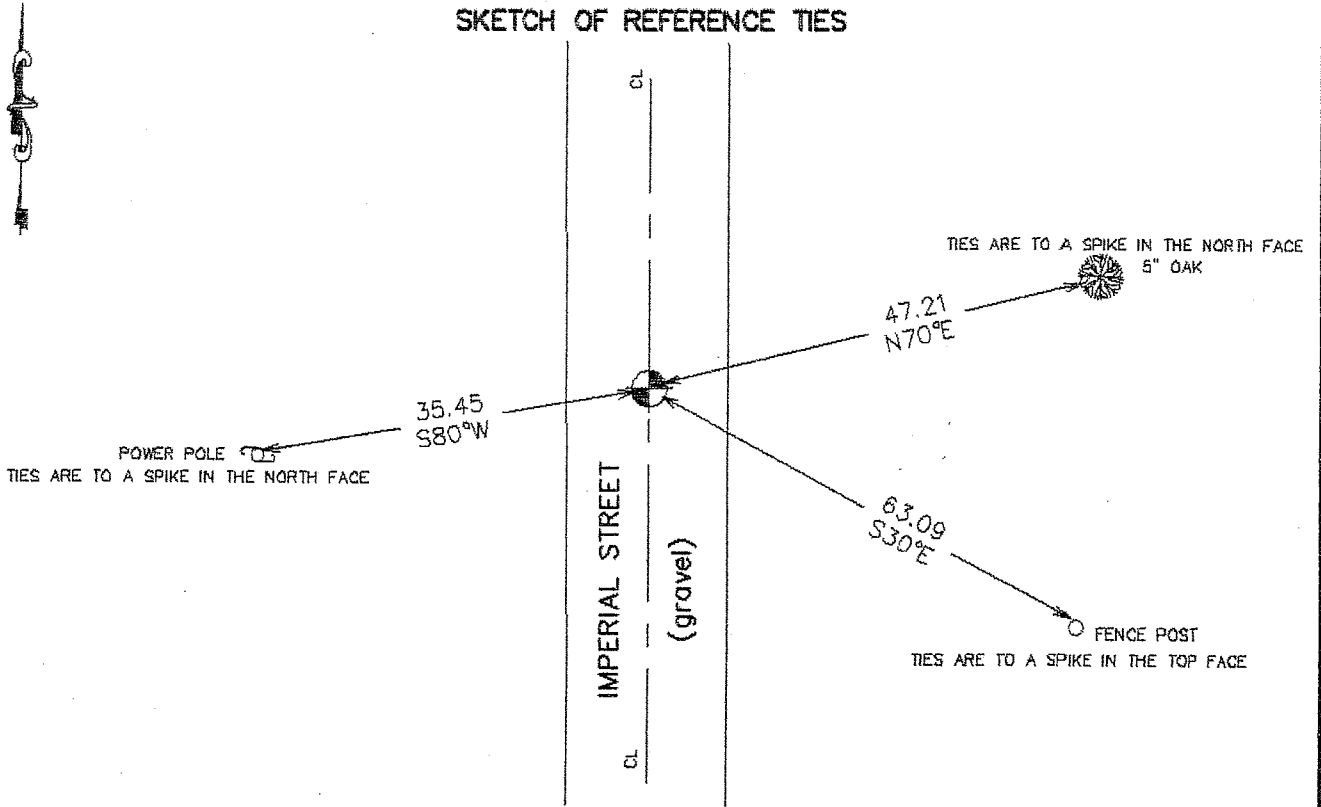
Northing= 103279.586

Easting= 385535.548

Note: NAD 1983, HARN 1996 Adjustment coordinates are NOT compatible with NAD 1983 coordinates

Note: 1 Meter=3937/1200 U.S. Survey Feet

SKETCH OF REFERENCE TIES



Statement of evidence relative to this corner location is on back of page.

I hereby certify that this document and the data contained herein was prepared by me or under my direct supervision.

Ernest J. Rud
Signature

7-22-2003
Date

Registration No. 9808

- Land Surveyor, Professional Engineer
 County Surveyor, County Engineer

OFFICE OF THE COUNTY RECORDER

County of _____

I hereby certify that this document was filed in the County Recorder's office at _____ M. on the _____ day of _____ A.D., 20____

County Recorder _____

BY _____ Deputy

DOCUMENT NO. _____

STATEMENT OF EVIDENCE

Original corner set by Silas Barnard in 1855.

Evidence of original corner and bearing trees no longer remain.

Records at Kanabec County show that George Jenks surveyed Section 28 in August 1925. His notes indicate he set a stone with a chiseled "X" at this corner and took ties. These ties no longer exist.

In February 2003 we surveyed sections 27, 28, 33, and 34 to tie in land corners and occupation lines.

On June 5th we excavated an 8 foot by 16 foot area 18 inches below natural ground. Found wood remnants at approximate location we had set spike. We set a #7 rebar with aluminum cap at the fence line to the east and on the centerline of the north-south road. This fit a S.P.M. within 1.5 feet. Took ties and established Kanabec County coordinates on monument.