

CERTIFICATE OF LOCATION OF GOVERNMENT CORNER

EAST QUARTER Corner of Section 4, Township 38, Range 24, 4TH P.M.

STATE OF MINNESOTA, County of KANABEC

At the corner location shown on the sketch:
On 05/ /2004 Found a Kanabec County Monument.

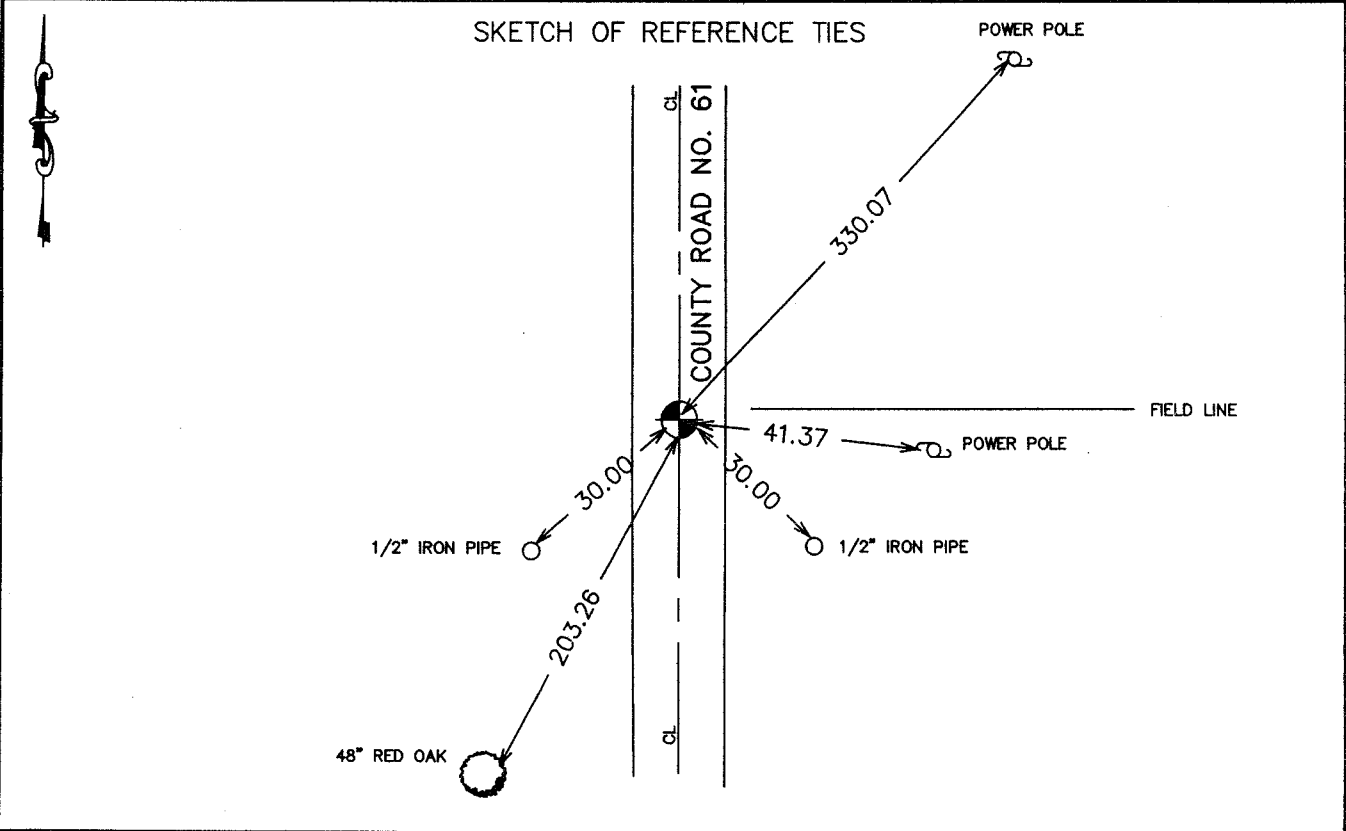
Kanabec County U.S. Survey Feet Coordinates
NAD 1983, HARN 1996 Adjustment
Obtained by RTK GPS Observation

Northing= 129662.737

Easting= 390865.804

Note: NAD 1983, HARN 1996 Adjustment
coordinates are NOT compatible with
NAD 1983 coordinates

Note: 1 Meter=3937/1200 U.S. Survey Feet



Statement of evidence relative to this corner location is on back of page.

I hereby certify that this document and the data contained herein was prepared by me or under my direct supervision.

Ernest J. Reed
Signature

6-14-2004
Date

Registration No. 9808

Land Surveyor, [] Professional Engineer

[] County Surveyor, [] County Engineer

OFFICE OF THE COUNTY RECORDER

County of _____

I hereby certify that this document was filed in the County Recorder's office at _____ M. on the

_____ day of _____ A.D., 20__

County Recorder _____

BY _____ Deputy

DOCUMENT NO. _____

STATEMENT OF EVIDENCE
(FROM TIE SHEET 947)

All of the original bearing trees are now gone.

Records on file at the County Recorder's Office show that in 1910, County Surveyor John Nelson, subdivided Section 4 into 40 Acre lots. He found a stone at this corner and set 2 more stones for ties.

In October of 1992, we ran a survey around Section 4 to locate existing monumentation and lines of occupation. This corner falls in the intersection of a north-south road and field line east. A 1/2" iron pipe was found at this location.

In October of 1992, we made an excavation with a backhoe (12'x12'x1.5' deep 1' into natural ground). No other evidence was found.

In April of 1994, we replaced the found iron pipe with a capped rebar to perpetuate this corner location. This position fits lines of occupation and Nelson's distance north.

(2004)

In May 2004, E.G. Rud ran a survey around Sections 8, 9, 10, & 11. We found the monument set by Dale B. Anderson and established Kanabec County Coordinates using G.P.S. equipment.