

# CERTIFICATE OF LOCATION OF GOVERNMENT CORNER

NORTHEAST Corner of Section 9, Township 38, Range 24, 4TH P.M.

STATE OF MINNESOTA, County of KANABEC

At the corner location shown on the sketch:  
On 05/ /2004 Found a Kanabec County Monument.

Kanabec County U.S. Survey Feet Coordinates  
NAD 1983, HARN 1996 Adjustment  
Obtained by RTK GPS Observation

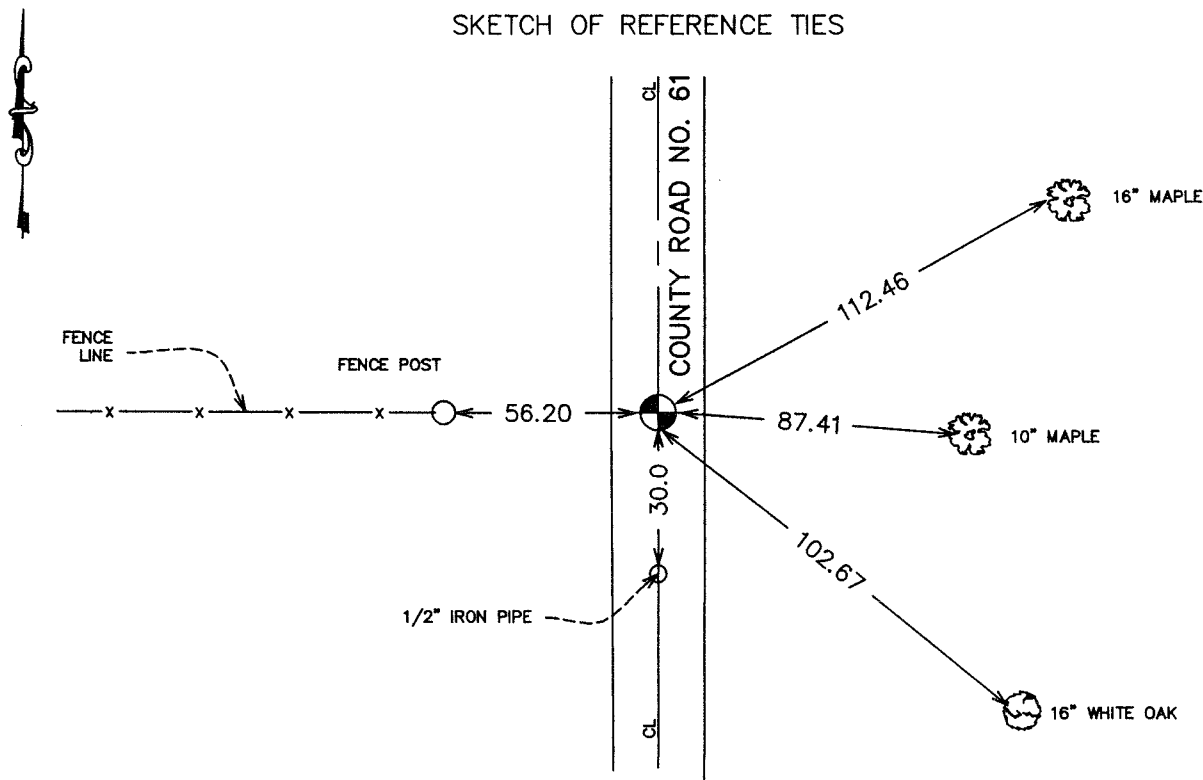
Northing= 127135.427

Easting= 390799.835

Note: NAD 1983, HARN 1996 Adjustment  
coordinates are NOT compatible with  
NAD 1983 coordinates

Note: 1 Meter=3937/1200 U.S. Survey Feet

SKETCH OF REFERENCE TIES



Statement of evidence relative to this corner location is on back of page.

I hereby certify that this document and the data contained herein was prepared by me or under my direct supervision.

*Ernest M. Reed*                      6-14-2004  
Signature    Date

Registration No. 9808

- Land Surveyor,             Professional Engineer  
 County Surveyor,         County Engineer

### OFFICE OF THE COUNTY RECORDER

County of \_\_\_\_\_

I hereby certify that this document was filed in the County Recorder's office at \_\_\_\_\_ M. on the \_\_\_\_\_ day of \_\_\_\_\_ A.D., 20\_\_\_\_

County Recorder \_\_\_\_\_

BY \_\_\_\_\_ Deputy

DOCUMENT NO. \_\_\_\_\_

STATEMENT OF EVIDENCE  
(FROM TIE SHEET 948)

All of the original bearing trees are now gone.

Records on file at the County Recorder's Office show that in 1910, County Surveyor John Nelson, subdivided Section 4 into 40 Acre lots. It appears that he set a stone in place of found government post.

In October of 1992, we made an excavation with a backhoe (15'x15'x5' deep 1' into natural ground). No evidence of the original corner was found. It appeared that parts of the area may have been excavated in road construction.

We set a 1/2" by 16" iron pipe at the intersection of the fenceline west and centerline road to re-establish this corner location. This position checks good with Nelson's distances north and west.

(2004)

In May 2004, E.G. Rud ran a survey around Sections 8, 9, 10, & 11. We found the monument set by Dale B. Anderson and established Kanabec County Coordinates using G.P.S. equipment.