

CERTIFICATE OF LOCATION OF GOVERNMENT CORNER

EAST QUARTER Corner of Section 9, Township 38, Range 24, 4TH P.M.
 STATE OF MINNESOTA, County of KANABEC

At the corner location shown on the sketch:
 JULY 7, 2009: Set a Kanabec County Monument.

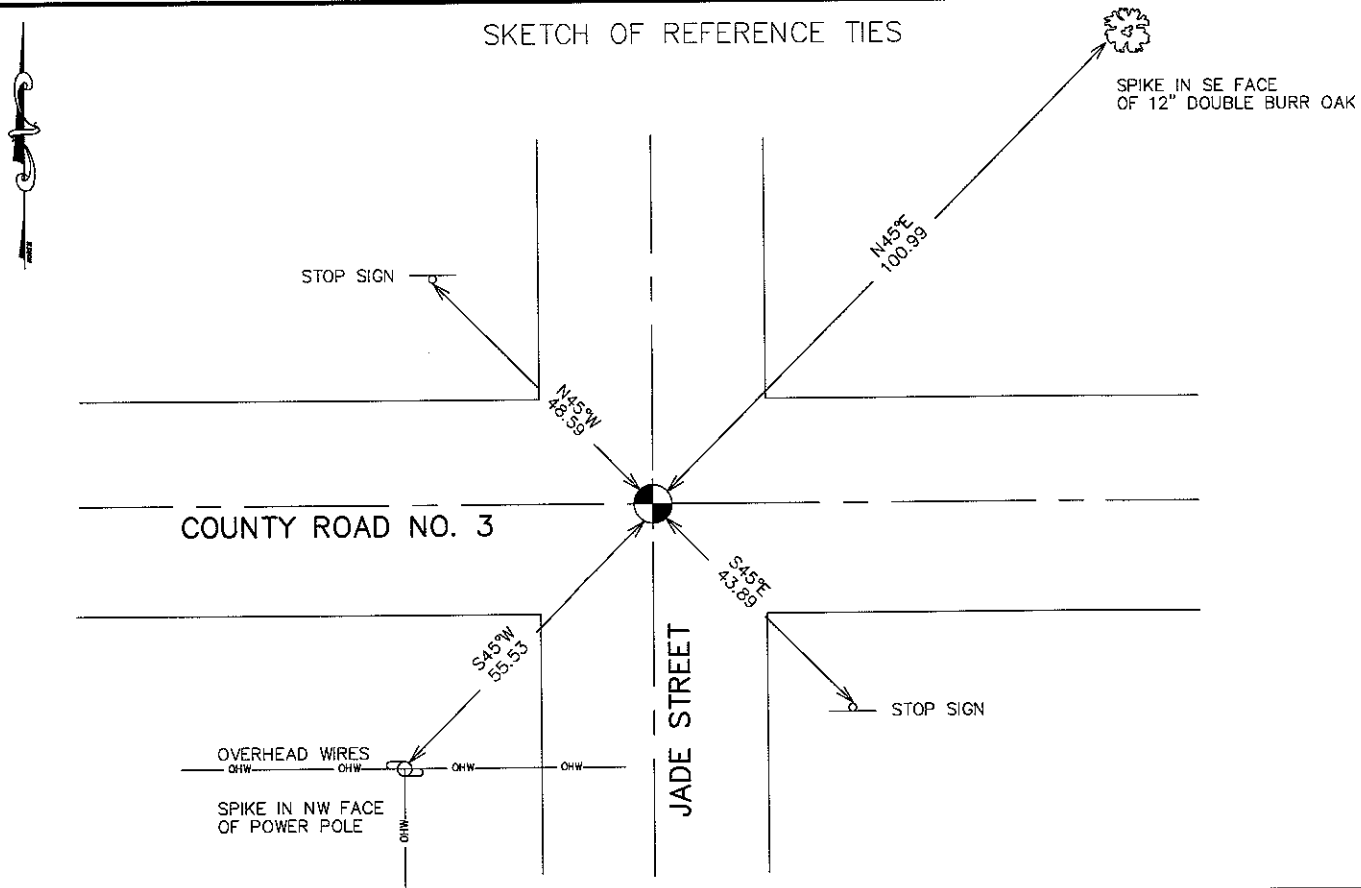
Kanabec County U.S. Survey Feet Coordinates
 NAD 1983, HARN 1996 Adjustment
 Obtained by RTK GPS Observation

Northing= 124512.52
 Easting= 390789.43

Note: NAD 1983, HARN 1996 Adjustment
 coordinates are NOT compatible with
 NAD 1983 coordinates

Note: 1 Meter=3937/1200 U.S. Survey Feet

SKETCH OF REFERENCE TIES



Statement of evidence relative to this corner location is on back of page.

I hereby certify that this document and the data contained herein was prepared by me or under my direct supervision.

Ernest Rud
 Signature

2-02-2010
 Date

Registration No. 9808

- Land Surveyor, Professional Engineer
 County Surveyor, County Engineer

OFFICE OF THE COUNTY RECORDER

County of _____

I hereby certify that this document was filed in the County Recorder's office at _____ M. on the _____ day of _____ A.D., 20____

County Recorder _____

BY _____ Deputy

DOCUMENT NO. _____

E 1/4 CORNER, SEC. 9, T.38, R.24

STATEMENT OF EVIDENCE

ORIGINAL CORNER WAS SET IN AUGUST 1855 BY DEPUTY SURVEYOR SILAS BARNARD AND TWO BEARING TREES ESTABLISHED. ORIGINAL CORNERS AND BEARING TREES NO LONGER REMAIN.

IN APRIL 1910, JOHN NELSON RAN A SURVEY AROUND SECTION 9 AND SET A STONE MARKED WITH AN X 1/4 S CHISELED ON IT.

IN MAY 2004 WE DID A SURVEY AROUND SECTION 4,5,8 AND 9 TO TIE IN EXISTING MONUMENTATION AND LINES OF OCCUPATION.

ON JUNE 30, 2004, WE MADE AN EXCAVATION ON THE CENTERLINE OF COUNTY ROAD 20 AND CENTERLINE OF A TOWNSHIP ROAD GOING NORTH AND SOUTH (JADE STREET) THIS EXCAVATION WAS 6' BY 12' BY 4', ONE FOOT INTO NATURAL GROUND. AT ABOUT 1 FOOT DEEP, WE FOUND A BENT #3 REBAR. WE DID NOT ENCOUNTER ANY TOPSOIL IN THE EXCAVATION. NO OTHER EVIDENCE FOR THE LOCATION OF THE CORNER WAS NOTED. WE ACCEPTED THIS REBAR AS THE BEST EVIDENCE FOR THE LOCATION OF THE CORNER. THIS POSITION FIT THE DISTANCES OF KANABEC COUNTY HIGHWAY DEPARTMENT TAKEN IN IN 1933.

WE PLACED AN IRON PIPE ON LOCATION OF #3 REBAR.

ON JULY 7, 2009, A #7 REBAR WITH AN ALUMINUM CAP WAS SET AND NEW TIES WERE TAKEN.