

CERTIFICATE OF LOCATION OF GOVERNMENT CORNER

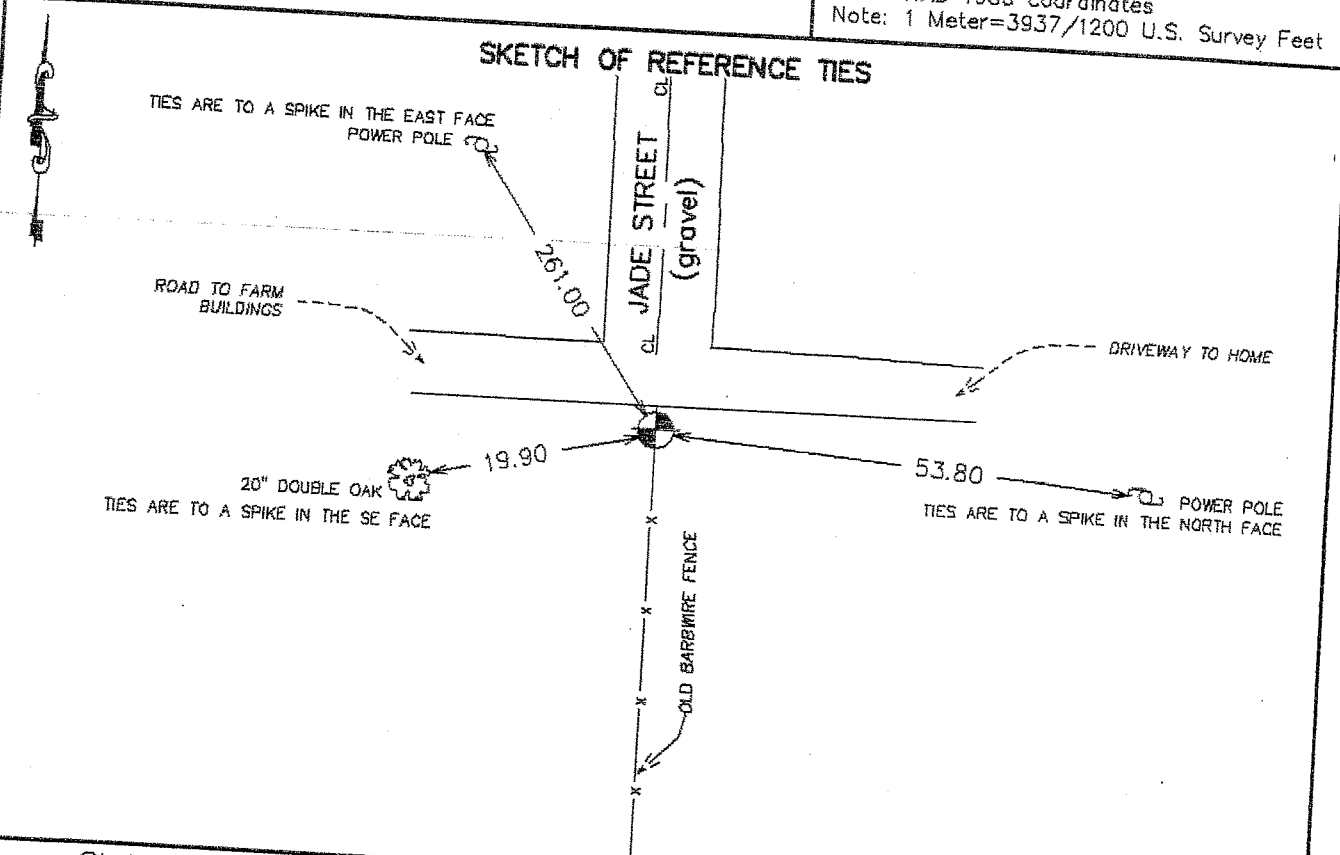
NORTHEAST Corner of Section 16, Township 38, Range 24, 4TH P.M.
 STATE OF MINNESOTA, County of KANABEC

At the corner location shown on the sketch:
 On 07/09/2002 Set a # 7 rebar, Kanabec County Aluminum cap.

Kanabec County U.S. Survey Feet Coordinates
 NAD 1983, HARN 1996 Adjustment
 Obtained by RTK GPS Observation

Northing= 121820.493
 Easting= 390766.355

Note: NAD 1983, HARN 1996 Adjustment
 coordinates are NOT compatible with
 NAD 1983 coordinates
 Note: 1 Meter=3937/1200 U.S. Survey Feet



Statement of evidence relative to this corner location is on back of page.

I hereby certify that this document and the data contained herein was prepared by me or under my direct supervision.

Ernest J. Reed 7-09-2003
 Signature Date

Registration No. 9808 Ernest J. Reed

Land Surveyor, Professional Engineer
 County Surveyor, County Engineer

OFFICE OF THE COUNTY RECORDER

County of _____
 I hereby certify that this document was filed in the County Recorder's office at _____ M. on the _____ day of _____ A.D., 20____

County Recorder _____
 BY _____ Deputy

DOCUMENT NO. _____

STATEMENT OF EVIDENCE

Original corner was set in July 1855 by Silas Bernard.

No original bearing trees remain.

In April 1911 John Nelson (County Surveyor) did a survey of Section 16 as recorded in Book A of Surveys, Page 91. At that time he set a sandstone monument.

In December 1971, Edwin Gould found a 6 inch by 6 inch square sandstone monument on north side of an east-west fence at intersection with a fence going to the south. He took 3 ties of which only one remain.

In June 2001 we excavated an area 15 feet by 15 feet and 2 feet deep. We did not find a square sandstone, but we did find the base of the corner fence post. We set a #7 rebar with a Kanabec County Monument Aluminum cap on top. This position fit within 0.2 feet of the one remaining tie of Gould's. The east-west fence is gone, but remnants of an old fence going to the south points to this location.

We established Kanabec County coordinates in March 2002.