

CERTIFICATE OF LOCATION OF GOVERNMENT CORNER

EAST QUARTER Corner of Section 16, Township 38, Range 24, 4TH P.M.
STATE OF MINNESOTA, County of KANABEC

At the corner location shown on the sketch:
On 03/ /2002 Found a #7 rebar with Kanabec County Aluminum cap.

Kanabec County U.S. Survey Feet Coordinates
NAD 1983, HARN 1996 Adjustment
Obtained by RTK GPS Observation

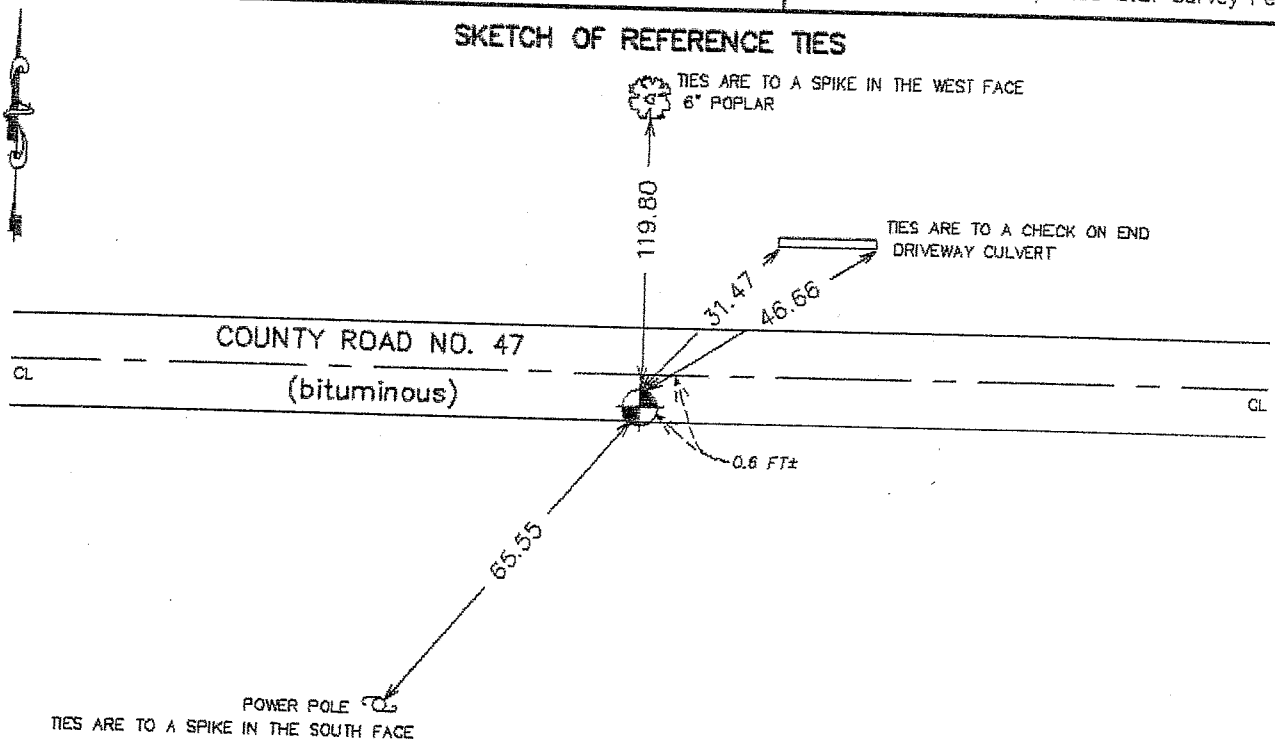
Northing= 119184.358

Easting= 390791.980

Note: NAD 1983, HARN 1996 Adjustment
coordinates are NOT compatible with
NAD 1983 coordinates

Note: 1 Meter=3937/1200 U.S. Survey Feet

SKETCH OF REFERENCE TIES



Statement of evidence relative to this corner location is on back of page.

I hereby certify that this document and the data contained herein was prepared by me or under my direct supervision.

Ernest J. Reed
Signature

8-8-2003
Date

Registration No. 9808

Land Surveyor, Professional Engineer
 County Surveyor, County Engineer

OFFICE OF THE COUNTY RECORDER

County of _____
I hereby certify that this document was filed in the County Recorder's office at _____ M. on the _____ day of _____ A.D., 20____

County Recorder _____
BY _____ Deputy

DOCUMENT NO. _____

STATEMENT OF EVIDENCE

Original corner was set in July 1855 by Silas Barnard.

No original bearing trees remain.

In April 1911 John Nelson, County Surveyor did a survey of Section 16 and placed a sandstone monument at the East Quarter corner.

In November 2001 we did a survey of Section 16 and excavated an area 4 feet by 6 feet by 3 feet deep. At the original ground surface we found a sandstone 18 inches +/- in diameter with a chiseled "X" on top. This was approximately 6 feet East of location marked by a Cast Iron Monument set by Gould in the 1970's.

We accepted the sandstone monument as the perpetuated location and set a #7 rebar with a Kanabec County aluminum cap on top. Set monument 0.5 +/- feet South of centerline flush with blacktop.

We established County coordinates in March of 2002.