

CERTIFICATE OF LOCATION OF GOVERNMENT CORNER

East quarter Corner of Section 21, Township 38, Range 24, 4th P.M.

STATE OF MINNESOTA, County of KANABEC

At the corner location shown on the sketch:

*Set 24" #7 rebar with aluminum cap
on west side of ditch & at E
of ditch going east*

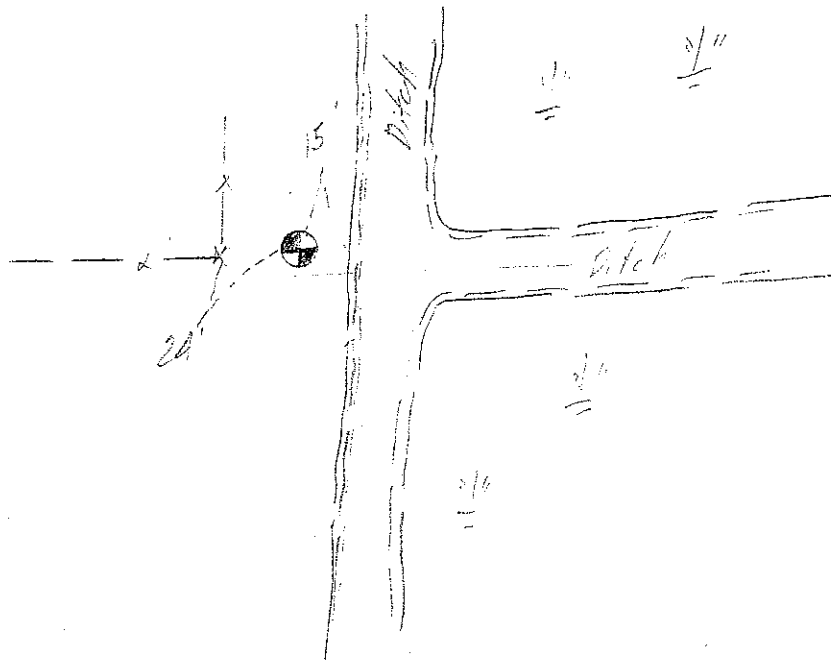
Kanabec County U.S. Survey Feet Coordinates
NAD 1983, HARN 1996 Adjustment
Obtained by RTK GPS Observation

Northing= 113919.50
Easting= 390719.50

Note: NAD 1983, HARN 1996 Adjustment
coordinates are NOT compatible with
NAD 1983 coordinates

Note: 1 Meter=3937/1200 U.S. Survey Feet

SKETCH OF REFERENCE TIES



Statement of evidence relative to this corner location is on back of page.

I hereby certify that this document and the data contained herein was prepared by me or under my direct supervision.

Ernest L. Reid
Signature

8-2-13
Date

Registration No. 9808

Land Surveyor, Professional Engineer

County Surveyor, County Engineer

OFFICE OF THE COUNTY RECORDER

County of _____

I hereby certify that this document was filed in the County Recorder's office at _____ M. on the

_____ day of _____ A.D., 20____

County Recorder _____

BY _____ Deputy

DOCUMENT NO. _____

The original Government post was set by Deputy Surveyor Silas Barnard in July 1855 and 2 bearing trees noted as;

7" Tamarack bearing North 20° East at 23 Links

6" Tamarack bearing North 35° West at 17 links

No evidence for corner or accessories could be found. In book 1 A of surveys pages 52 and 53 John Nelson recorded a survey dated June 11, 1910 of section 22. At that time he found Government witness corner at East quarter of Section 21 and southeast corner of Section 21.

Branch Ditch No. 3 runs along east line of Section 21. Ditch maps along with testimony from LeRoy Nelson and Darryl Erickson (land owners in southeast quarter Section 21 and southwest quarter Section 22) puts the Section line west of this ditch.

In 2002 EG Rud & Sons ran a survey around Section 21, 22 and north half of Section 28 to locate existing monumentation, line of occupation and develop search areas. Based on measurements from John Nelsons survey, lines of occupation and resident testimony this corner was set on the west side of the ditch and a fence line running west and a branch ditch running east. A # 7 rebar 30" long was set, ties taken and Kanabec County Corners established on this corner.