

# CERTIFICATE OF LOCATION OF GOVERNMENT CORNER

SOUTH QUARTER Corner of Section 22, Township 38, Range 24, 4TH P.M.  
STATE OF MINNESOTA, County of KANABEC

At the corner location shown on the sketch:  
On 05/03/2002 Set a KANABEC COUNTY MONUMENT.

Kanabec County U.S. Survey Feet Coordinates  
NAD 1983, HARN 1996 Adjustment  
Obtained by RTK GPS Observation

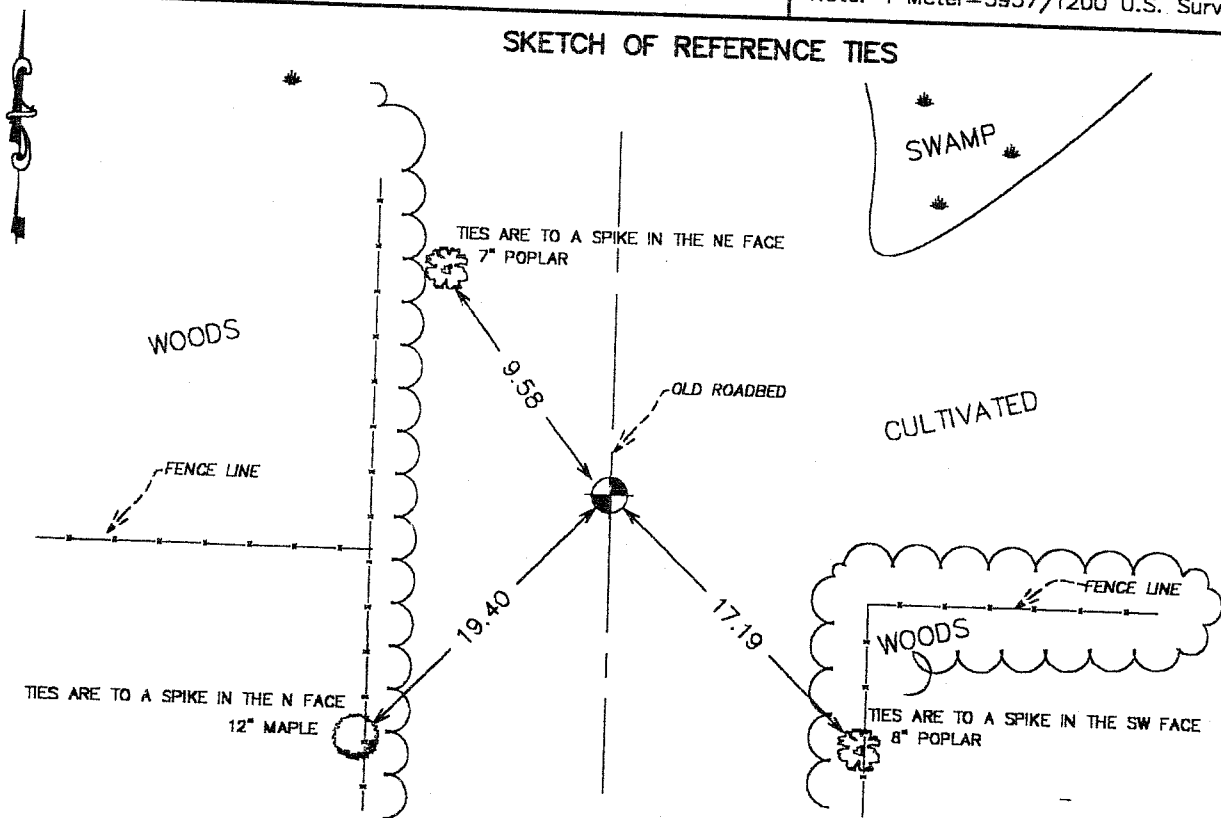
Northing= 111274.855

Easting= 393411.542

Note: NAD 1983, HARN 1996 Adjustment  
coordinates are NOT compatible with  
NAD 1983 coordinates

Note: 1 Meter=3937/1200 U.S. Survey Feet

## SKETCH OF REFERENCE TIES



Statement of evidence relative to this corner location is on back of page.

I hereby certify that this document and the data contained herein was prepared by me or under my direct supervision.

*Ernest G. Reed*  
Signature

11-25-2002  
Date

Registration No. 9808

- Land Surveyor,     Professional Engineer  
 County Surveyor,     County Engineer

## OFFICE OF THE COUNTY RECORDER

County of \_\_\_\_\_

I hereby certify that this document was filed in the County Recorder's office at \_\_\_\_\_ M. on the \_\_\_\_\_ day of \_\_\_\_\_ A.D., 20\_\_\_\_

County Recorder \_\_\_\_\_

BY \_\_\_\_\_ Deputy

DOCUMENT NO. \_\_\_\_\_

## STATEMENT OF EVIDENCE

Original corner was set in July 1855 by Silas Barnard. Original bearing trees are all gone.

On June 11, 1910 John Nelson (county surveyor) did a survey of Section 22 and indicated he set a stone at this location. On March 7, 2002 we did a survey around Sections 21 and 28 tying in existing monuments of occupation lines and setting control points. We set a spike at the intersection of an old North-South roadbed and old fence lines going East and West from this location. On May 3, 2002 we hand excavated an area 10 feet by 10 feet at this location 6 inches into natural ground and found nothing. We set a monument at our location. This fit John Nelsons measurement within a foot to the Southeast corner and within two feet to the Southwest corner. We took ties and established county coordinates on this corner.