

# CERTIFICATE OF LOCATION OF GOVERNMENT CORNER

EAST QUARTER Corner of Section 28, Township 38, Range 24, 4TH P.M.  
STATE OF MINNESOTA, County of KANABEC

At the corner location shown on the sketch:  
On 06/05/2003 Set a #7 rebar with Kanabec County Aluminum cap.

Kanabec County U.S. Survey Feet Coordinates  
NAD 1983, HARN 1996 Adjustment  
Obtained by RTK GPS Observation

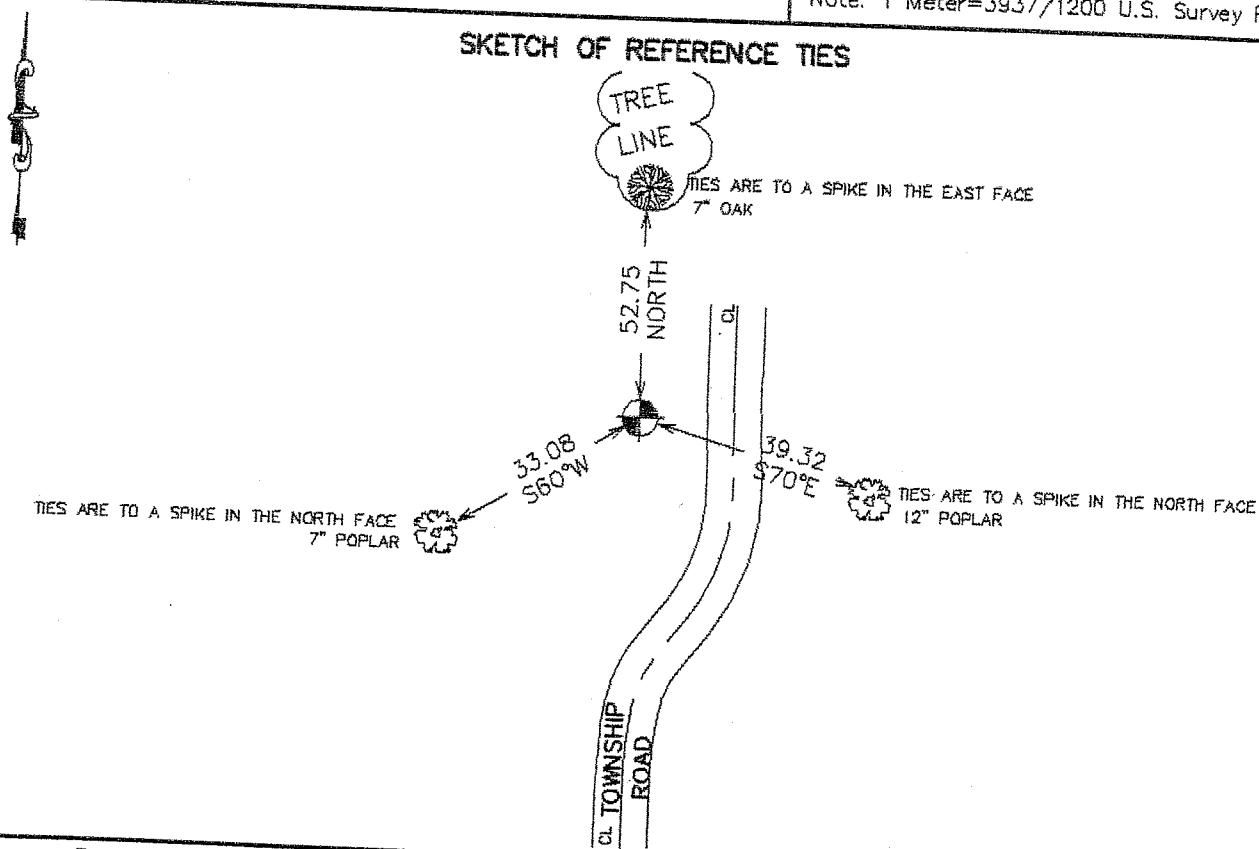
Northing= 108655.184

Easting= 390729.817

Note: NAD 1983, HARN 1996 Adjustment coordinates are NOT compatible with NAD 1983 coordinates

Note: 1 Meter=3937/1200 U.S. Survey Feet

## SKETCH OF REFERENCE TIES



Statement of evidence relative to this corner location is on back of page.

I hereby certify that this document and the data contained herein was prepared by me or under my direct supervision.

Ernest J. Rud  
Signature

7-22-2003  
Date

Registration No. 9808

- Land Surveyor,  Professional Engineer
- County Surveyor,  County Engineer

## OFFICE OF THE COUNTY RECORDER

County of \_\_\_\_\_  
I hereby certify that this document was filed in the County Recorder's office at \_\_\_\_\_ M. on the \_\_\_\_\_ day of \_\_\_\_\_ A.D., 20\_\_\_\_

County Recorder \_\_\_\_\_  
BY \_\_\_\_\_ Deputy

DOCUMENT NO. \_\_\_\_\_

## STATEMENT OF EVIDENCE

Original corner set by Silas Barnard in 1855.

Evidence of original corner and bearing trees no longer remain.

Records at Kanabec County show that George Jenks surveyed Section 28 in August 1925. His notes indicate he set a stone with a chiseled "X" at this corner and took ties. These ties no longer exist.

In February 2003 we surveyed sections 27, 28, 33, and 34 to tie in land corners and occupation lines.

This corner falls on the centerline of a Township road, South of a north tree line, and occupation lines east-west.

On June 5th we excavated a 10 foot by 20 foot hole 2 feet deep. We did not find the stone set by Jenks, but we did find a pointed stake 5 +/- inches in diameter and 12 inches long. This fell at the location of the occupation lines and we believe it to be the original corner.

We set a #7 rebar with aluminum cap, took ties and established Kanabec County coordinates on the monument.