

CERTIFICATE OF LOCATION OF GOVERNMENT CORNER

NORTH QUARTER Corner of Section 3 4, Township 38, Range 24, 4TH P.M.
STATE OF MINNESOTA, County of KANABEC

At the corner location shown on the sketch:
On 03/06/2002 Set an Aluminum Monument and Rebar.

Kanabec County U.S. Survey Feet Coordinates
NAD 1983, HARN 1996 Adjustment
Obtained by RTK GPS Observation

Northing= 105993.548

Easting= 393404.988

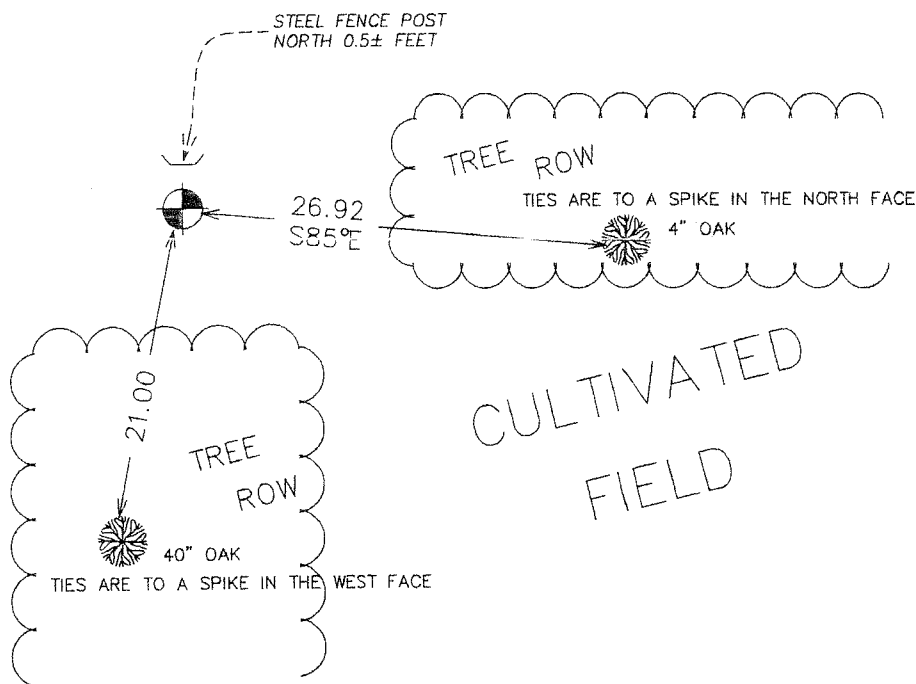
Note: NAD 1983, HARN 1996 Adjustment
coordinates are NOT compatible with
NAD 1983 coordinates

Note: 1 Meter=3937/1200 U.S. Survey Feet

SKETCH OF REFERENCE TIES



CULTIVATED
FIELD



Statement of evidence relative to this corner location is on back of page.

I hereby certify that this document and the data contained herein was prepared by me or under my direct supervision.

Evelyn Reed
Signature

1-03-2007
Date

Registration No. Minn No 9808

Land Surveyor, Professional Engineer

County Surveyor, County Engineer

OFFICE OF THE COUNTY RECORDER

County of _____

I hereby certify that this document was filed in the County Recorder's office at _____ M. on the

_____ day of _____ A.D., 20____

County Recorder _____

BY _____ Deputy

DOCUMENT NO. _____

NORTHWEST CORNER SECTION 23, T41, R24

STATEMENT OF EVIDENCE

THE ORIGINAL CORNER WAS SET BY DEPUTY SURVEYOR SILAS BARNERD IN JULY 1855. EVIDENCE FOR THE CORNER OR BEARING TREES NO LONGER REMAIN.

THERE IS A RECORD OF A SURVEY ^{corner} DONE BY JOHN NELSON IN DECEMBER OF 1901. AT THAT HE SET THE QUARTER ^{corner} ON LINE AND SPLIT BETWEEN THE NORTHEAST AND NORTHWEST CORNER OF SECTION 34.

IN MARCH 2003 E.G. RUD AND SONS RAN A SURVEY AROUND SECTIONS 27, 28, 33, AND 34 TO LOCATE EXISTING MONUMENTATION AND LINES OF OCCUPATION.

THIS CORNER FALLS ON A TREE ^{row} ~~ROW~~ RUNNING EAST AND A TREE ^{row} RUNNING SOUTH. THERE ARE ROCK PILES RUNNING SOUTH AND EAST FROM THIS CORNER ALSO.

A HAND EXCAVATION AND SEARCH AREA WAS MADE AT THIS LOCATION BUT NO MONUMENT COULD BE FOUND. THEREFORE THE LINES OF OCCUPATION WERE ACCEPTED AS THE BEST EVIDENCE FOR THIS CORNER. A #7 REBAR WITH AN ALUMINUM CAP WAS SET, TIES TAKEN AND KANABEC COUNTY COORDINATES ESTABLISHED USING G.P.S. EQUIPMENT.