

# CERTIFICATE OF LOCATION OF GOVERNMENT CORNER

NORTHEAST Corner of Section 33, Township 38, Range 24, 4TH P.M.

STATE OF MINNESOTA, County of KANABEC

At the corner location shown on the sketch:  
On 06/05/2003 Set a Aluminum cap over Cast Iron Monument.

Kanabec County U.S. Survey Feet Coordinates  
NAD 1983, HARN 1996 Adjustment  
Obtained by RTK GPS Observation

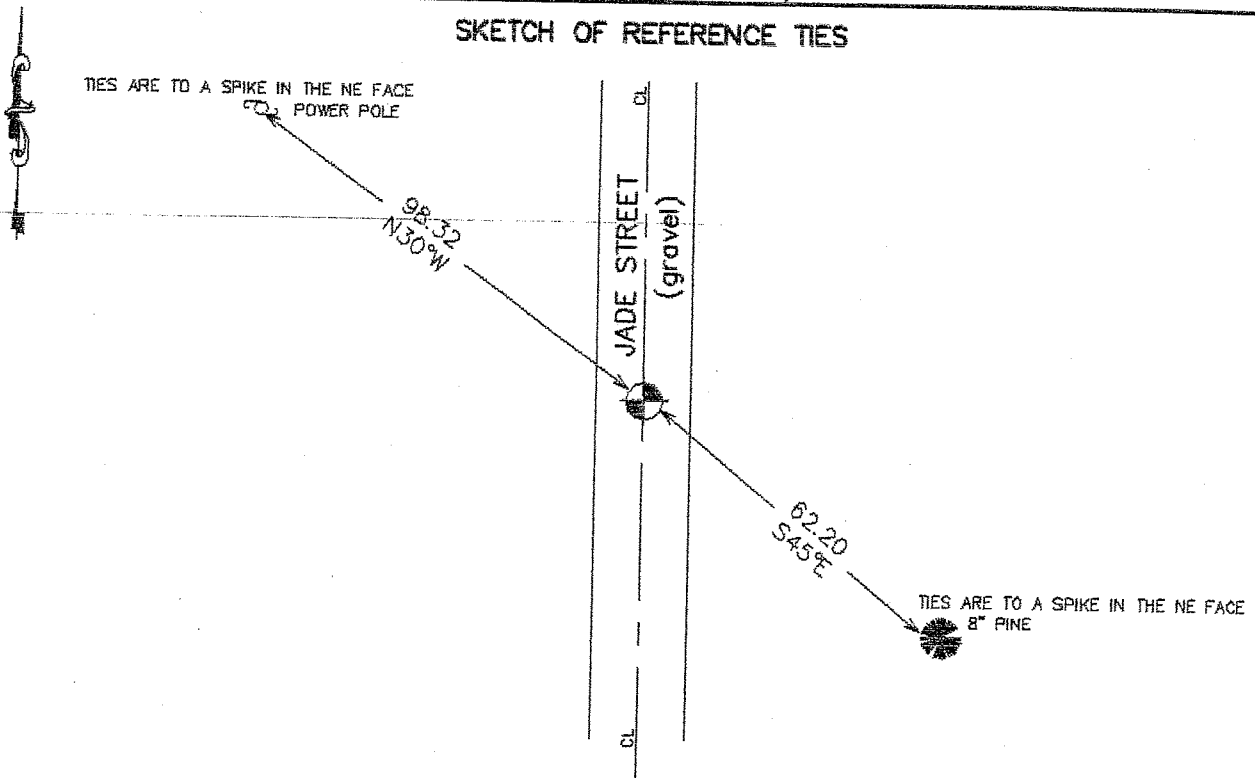
Northing= 106033.278

Easting= 390751.066

Note: NAD 1983, HARN 1996 Adjustment  
coordinates are NOT compatible with  
NAD 1983 coordinates

Note: 1 Meter=3937/1200 U.S. Survey Feet

## SKETCH OF REFERENCE TIES



Statement of evidence relative to this corner location is on back of page.

I hereby certify that this document and the data contained herein was prepared by me or under my direct supervision.

Ernest Alud  
Signature

7-08-2003  
Date

Registration No. 9808

Land Surveyor,  Professional Engineer

County Surveyor,  County Engineer

## OFFICE OF THE COUNTY RECORDER

County of \_\_\_\_\_

I hereby certify that this document was filed in the County Recorder's office at \_\_\_\_\_ M. on the

\_\_\_\_\_ day of \_\_\_\_\_ A.D., 20\_\_\_\_

County Recorder \_\_\_\_\_

BY \_\_\_\_\_ Deputy

DOCUMENT NO. \_\_\_\_\_

## STATEMENT OF EVIDENCE

Original corner set by Silas Barnard in July 1855.

Evidence of original corner and bearing trees no longer remain.

Records of Kanabec County show that George Jenks surveyed Section 28 in August 1925. His notes indicate he set a stone with an "X" for this corner and took ties. These ties no longer remain.

In February 2003 we surveyed around Sections 27, 28, 33, and 34 to tie in land corners and occupation line. The corner falls on the centerline of a gravel road and on the extension of an old fence line to the east. On June 5, 2003 we excavated an 8 foot by 12 foot hole at this location. Down 2.5 feet at original ground level we found an 8" square sandstone with a chiseled "X". We tied this out, reset a #7 rebar with an aluminum cap, established Kanabec County coordinates on the monument and took ties to the corner.