

# CERTIFICATE OF LOCATION OF GOVERNMENT CORNER

EAST QUARTER Corner of Section 33, Township 38, Range 24, 4TH P.M.  
 STATE OF MINNESOTA, County of KANABEC

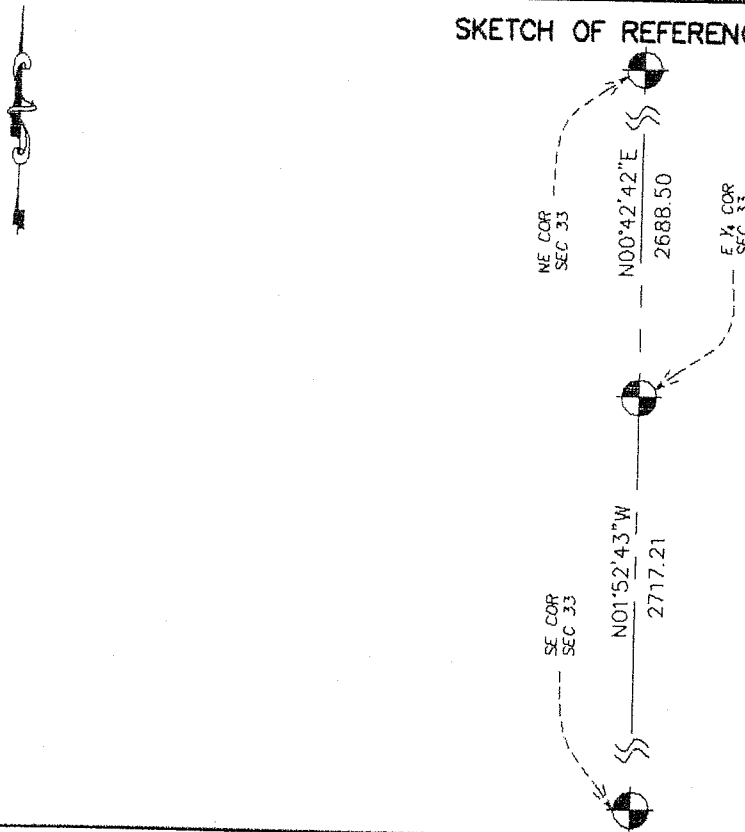
At the corner location shown on the sketch:  
 On 06/05/2003 Set a Kanabec County Monument.

Kanabec County U.S. Survey Feet Coordinates  
 NAD 1983, HARN 1996 Adjustment  
 Obtained by RTK GPS Observation

Northing= 103344.983  
 Easting= 390717.675

Note: NAD 1983, HARN 1996 Adjustment  
 coordinates are NOT compatible with  
 NAD 1983 coordinates  
 Note: 1 Meter=3937/1200 U.S. Survey Feet

### SKETCH OF REFERENCE TIES



Statement of evidence relative to this corner location. is on back of page.

I hereby certify that this document and the data contained herein was prepared by me or under my direct supervision.

Ernst Gud  
 Signature

11-03-2003  
 Date

Registration No. 9808

- Land Surveyor,     Professional Engineer  
 County Surveyor,     County Engineer

### OFFICE OF THE COUNTY RECORDER

County of \_\_\_\_\_

I hereby certify that this document was filed in the County Recorder's office at \_\_\_\_\_ M. on the \_\_\_\_\_ day of \_\_\_\_\_ A.D., 20\_\_\_\_

County Recorder \_\_\_\_\_

BY \_\_\_\_\_ Deputy

DOCUMENT NO. \_\_\_\_\_

*E 1/4 cor Sec. 33, T38, R24*

STATEMENT OF EVIDENCE

Original corner was set by Silas Barnard in 1855. No evidence of original corner or bearing trees remain.

Records at Kanabec County show that in 1901 John Nelson did a survey in Section 34 and noted this corner to be a good government corner.

In February 2003 we surveyed sections 27, 28, 33, and 34 to tie in land corners and occupation lines.

On June 5, 2003 we excavated at this location being at the intersection of a north-south road and a road to the east. All surrounding area is swamp. We dug to a depth of 6 feet and encountered gravel all the way down. It is apparent that this intersection was *subcut* and filled in with granular material. We set a monument at the intersection of two roads. This fit John Nelsons measurement to the north within 1.5 feet and to the east within 5 feet.

We set a Kanabec County Monument and established Kanabec County Coordinates on monument.