

# CERTIFICATE OF LOCATION OF GOVERNMENT CORNER

EAST QUARTER Corner of Section 3, Township 38, Range 24, 4TH P.M.

STATE OF MINNESOTA, County of KANABEC

At the corner location shown on the sketch:  
On 05/ /2004 Found a Kanabec County Monument.

Kanabec County U.S. Survey Feet Coordinates  
NAD 1983, HARN 1996 Adjustment  
Obtained by RTK GPS Observation

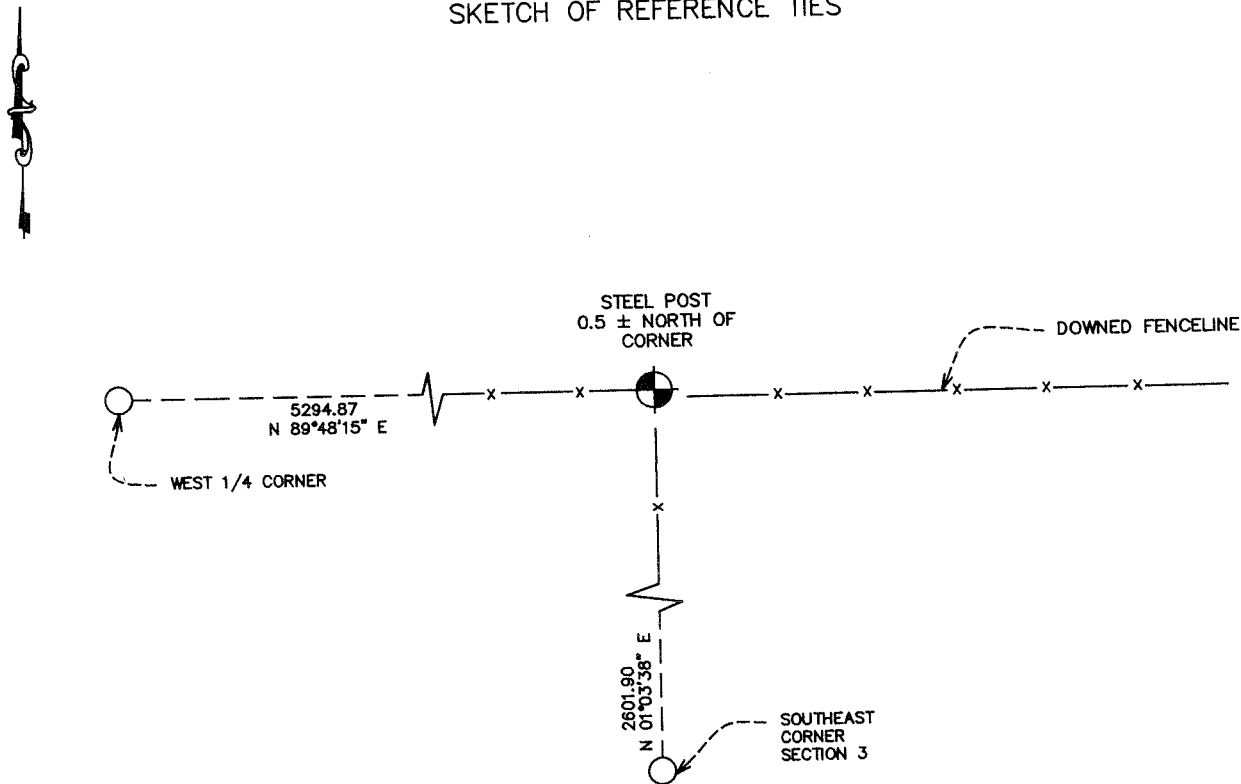
Northing= 129680.831

Easting= 396160.647

Note: NAD 1983, HARN 1996 Adjustment  
coordinates are NOT compatible with  
NAD 1983 coordinates

Note: 1 Meter=3937/1200 U.S. Survey Feet

## SKETCH OF REFERENCE TIES



Statement of evidence relative to this corner location is on back of page.

I hereby certify that this document and the data contained herein was prepared by me or under my direct supervision.

*Ernest J. Rud*  
Signature

6-22-04  
Date

Registration No. 9808

Land Surveyor,      [ ] Professional Engineer

[ ] County Surveyor,      [ ] County Engineer

### OFFICE OF THE COUNTY RECORDER

County of \_\_\_\_\_

I hereby certify that this document was filed in the County Recorder's office at \_\_\_\_\_ M. on the \_\_\_\_\_ day of \_\_\_\_\_ A.D., 20\_\_\_\_

County Recorder \_\_\_\_\_

BY \_\_\_\_\_ Deputy

DOCUMENT NO. \_\_\_\_\_

STATEMENT OF EVIDENCE  
(FROM TIE SHEET 884)

All of the original bearing trees are now gone.

There is a survey record for Section 2 filed in Book A of Surveyor's Records, page 304, by John Nelson, County Surveyor.

In April of 1994, we ran a survey around Section 4 and to the east quarter corner of Section 10 and south quarter corner of Section 2 to locate existing monuments, lines of occupation, and search areas.

This corner falls at the intersection of fences east, west, and south. A search was made in this area, but no evidence of any monument was found.

After analyzing the measurements to existing monuments, the location of the old fence intersection was accepted as the perpetuated location of the original corner.

(2004)

In May 2004, E.G. Rud ran a survey around Section 3. We found the monument set by M. B. Rude, and established Kanabec County Coordinates using G.P.S. equipment.