

CERTIFICATE OF LOCATION OF GOVERNMENT CORNER

NORTH QUARTER Corner of Section 11, Township 38, Range 24, 4TH P.M.

STATE OF MINNESOTA, County of KANABEC

At the corner location shown on the sketch:

FOUND THIS MONUMENT
AND ESTABLISHED G.P.S. COORDINATES ON ITS LOCATION.

Kanabec County U.S. Survey Feet Coordinates
NAD 1983, HARN 1996 Adjustment
Obtained by RTK GPS Observation

Northing= 127103.77

Easting= 398773.82

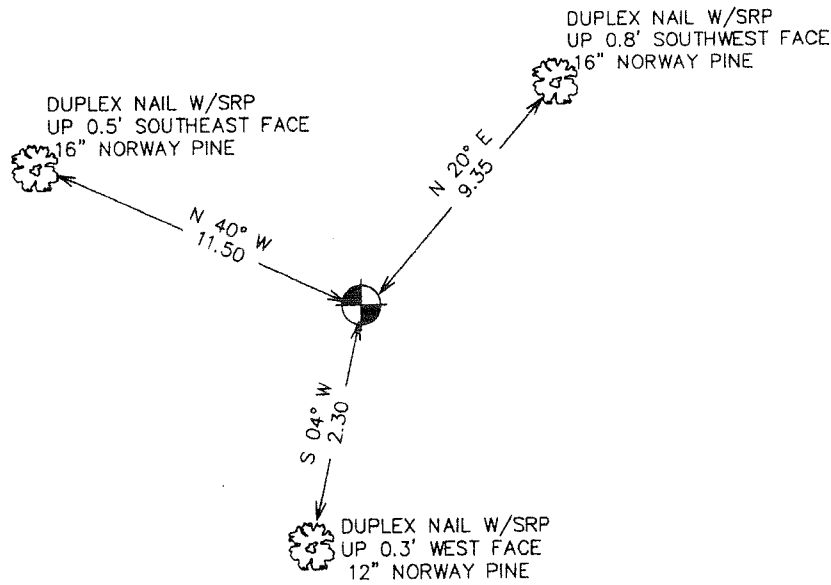
Note: NAD 1983, HARN 1996 Adjustment
coordinates are NOT compatible with
NAD 1983 coordinates

Note: 1 Meter=3937/1200 U.S. Survey Feet

SKETCH OF REFERENCE TIES



TRUNK HIGHWAY NO. 65



Statement of evidence relative to this corner location is on back of page.

I hereby certify that this document and the data contained herein was prepared by me or under my direct supervision.

Ernest Alud
Signature

11-1-2006
Date

Registration No. Minn No 9808

Land Surveyor, Professional Engineer

County Surveyor, County Engineer

OFFICE OF THE COUNTY RECORDER

County of _____

I hereby certify that this document was filed in the County Recorder's office at _____ M. on the

_____ day of _____ A.D., 20____

County Recorder _____

BY _____ Deputy

DOCUMENT NO. _____

NORTH QUARTER CORNER SECTION 11, T38, R24

STATEMENT OF EVIDENCE

THE ORIGINAL PUBLIC LAND SURVEY WAS RUN IN 1855. ORIGINAL CORNER AND BEARING TIES NO LONGER REMAIN.

IN MAY, 2004, E.G. RUD CONDUCTED A SURVEY AROUND SECTIONS 8, 9, 10, AND 11. A CAST IRON MONUMENT WAS RECOVERED AT THE LOCATION OF THE NORTH QUARTER OF SECTION 11, THE CAST IRON MONUMENT WAS POSITIONED BY G.P.S. SURVEY METHODS AND THE BREAKDOWN FOR SECTION 11 WAS COMPUTED IN KANABEC COUNTY COORDINATES.

NO FIELD TIE SHEET WAS UPDATED AT THAT TIME.

ON JULY 12, 2006, THE MINNESOTA DEPARTMENT OF TRANSPORTATION SEARCHED AND RECOVERED A CAST IRON MONUMENT AT THE LOCATION OF THE NORTH QUARTER OF SECTION 11. THE POSITION OF THE MONUMENT WAS CHECKED AND THREE BEARING TIES WERE FOUND AND MEASUREMENTS WERE RECORDED. THE MINNESOTA DEPARTMENT OF TRANSPORTATION ACCEPTS THIS MONUMENT AS THE CORNER LOCATION FOR THE CORNER.

FOR DETAILS AND SURVEY ANALYSIS, CONTACT THE MINNESOTA DEPARTMENT OF TRANSPORTATION DISTRICT SURVEYS OFFICE IN BAXTER, MINNESOTA.

THE KANABEC COUNTY COORDINATES FOR THIS CORNER WERE ADDED TO CERTIFICATE OF LOCATION ON 09/05/06 BY E.G. RUD AND SONS AS ESTABLISHED IN MAY 2004.