

# CERTIFICATE OF LOCATION OF GOVERNMENT CORNER

NORTHEAST Corner of Section 10, Township 38, Range 24, 4TH P.M.

STATE OF MINNESOTA, County of KANABEC

At the corner location shown on the sketch:  
On 05/ /2004 Found a Kanabec County Monument.

Kanabec County U.S. Survey Feet Coordinates  
NAD 1983, HARN 1996 Adjustment  
Obtained by RTK GPS Observation

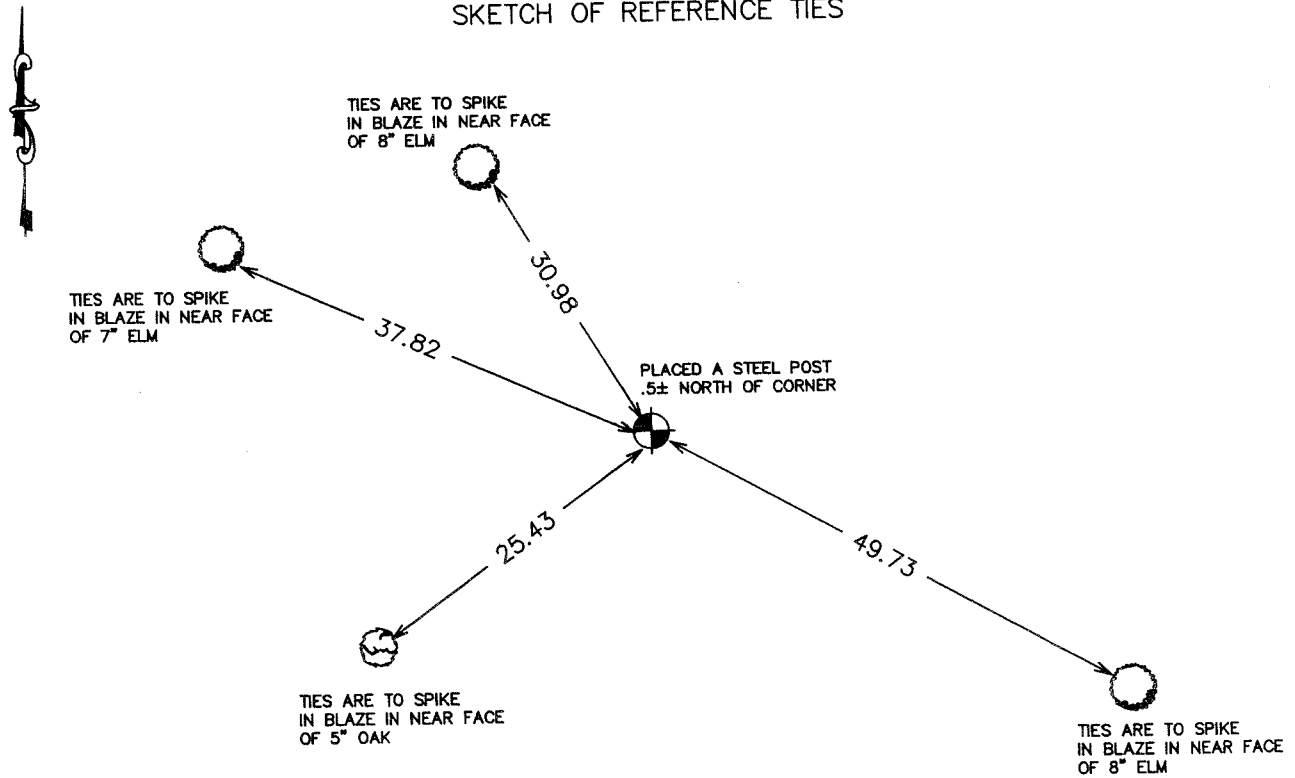
Northing= 127079.379

Easting= 396112.488

Note: NAD 1983, HARN 1996 Adjustment  
coordinates are NOT compatible with  
NAD 1983 coordinates

Note: 1 Meter=3937/1200 U.S. Survey Feet

### SKETCH OF REFERENCE TIES



Statement of evidence relative to this corner location is on back of page.

I hereby certify that this document and the data contained herein was prepared by me or under my direct supervision.

*Ernest J. [Signature]*  
Signature

6-22-04  
Date

Registration No. 9808

Land Surveyor,     Professional Engineer

County Surveyor,     County Engineer

### OFFICE OF THE COUNTY RECORDER

County of \_\_\_\_\_

I hereby certify that this document was filed in the County Recorder's office at \_\_\_\_\_ M. on the \_\_\_\_\_ day of \_\_\_\_\_ A.D., 20\_\_\_\_

County Recorder \_\_\_\_\_

BY \_\_\_\_\_ Deputy

DOCUMENT NO. \_\_\_\_\_

STATEMENT OF EVIDENCE  
(FROM TIE SHEET 885)

All of the original bearing trees are now gone.

There is a survey record for Section 2 filed in Book A of Surveyor's Records, page 304, by John Nelson, County Surveyor, but this corner is not shown.

In April of 1994, we ran a survey around Section 4 to the east quarter corner of Section 10 and south quarter corner of Section 2 to locate existing monuments, lines of occupation and search areas.

There is evidence of an old north-south fence in this area. A search was made, but no evidence of any monument was found.

After analyzing the measurements to existing monument, this corner was reset by extension of the line and distance from the east quarter corner of Section 3 through the center line of the road and fence line at the sixteenth corner between the east quarter corner and southeast corner of Section 3. This location is in harmony with the existing lines of occupation and was accepted as the perpetuated location of the original corner.

(2004)

In May 2004, E.G. Rud ran a survey around Sections 8, 9, 10, and 11. We found the monument set by M.B. Rude, and established Kanabec County Coordinates using G.P.S. equipment.