

CERTIFICATE OF LOCATION OF GOVERNMENT CORNER

EAST QUARTER Corner of Section 10, Township 38, Range 24, 4TH P.M.

STATE OF MINNESOTA, County of KANABEC

At the corner location shown on the sketch:
On 05/ /2004 Found a Kanabec County Monument.

Kanabec County U.S. Survey Feet Coordinates
NAD 1983, HARN 1996 Adjustment
Obtained by RTK GPS Observation

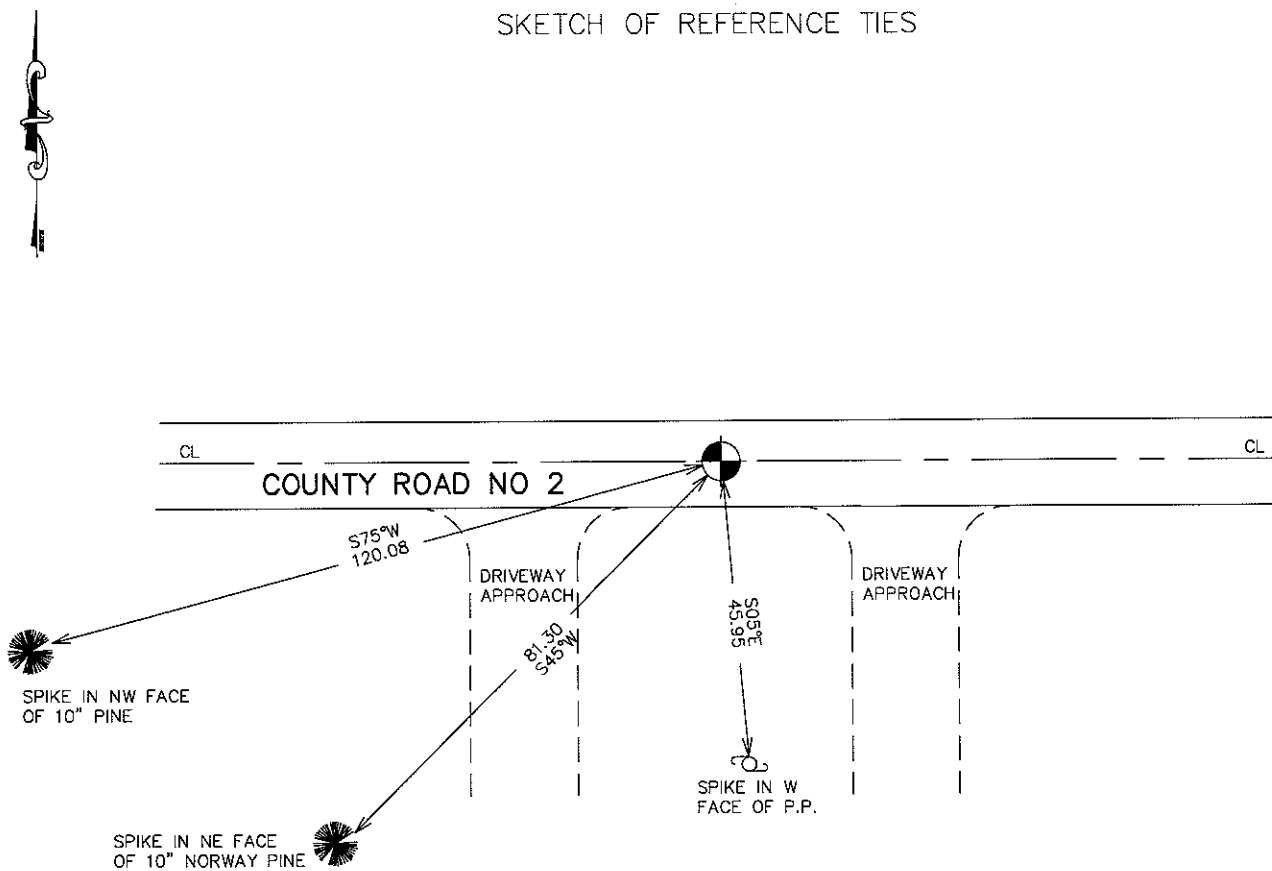
Northing= 124457.964

Easting= 396135.865

Note: NAD 1983, HARN 1996 Adjustment
coordinates are NOT compatible with
NAD 1983 coordinates

Note: 1 Meter=3937/1200 U.S. Survey Feet

SKETCH OF REFERENCE TIES



Statement of evidence relative to this corner location is on back of page.

I hereby certify that this document and the data contained herein was prepared by me or under my direct supervision.

Ernest J. Reed
Signature

2-2-2010
Date

Registration No. 9808

Land Surveyor, Professional Engineer

County Surveyor, County Engineer

OFFICE OF THE COUNTY RECORDER

County of _____

I hereby certify that this document was filed in the County Recorder's office at _____ M. on the _____ day of _____ A.D., 20 _____

County Recorder _____

BY _____ Deputy

DOCUMENT NO. _____

E 1/4 CORNER, SEC. 10, T.38, R.24

STATEMENT OF EVIDENCE

Original corner was set by Deputy Surveyor Sialas Barnard in July 1855. Original corner and bearing trees no longer remain.

Certificate of location filed by Norm Hoiium in June 1970 at Kanabec County, states Hoiium found a 1/2" iron pipe at this location and set a Cast Iron Monument.

In May 2004, we did a survey around Sections 8, 9, 10 and 11 and found this Cast Iron Monument. We took new ties and established Kanabec County Coordinates on this position.

On July 12, 2006, a Minnesota Dept. of Transportation Survey Crew found a Cast Iron Monument at the intersection of an entrance South and the centerline of Kanabec County Rd. 2. Three field tied were taken and verified. The Minnesota Dept. of Transportation accepts this monument as the correct location for the corner.

On July 7, 2009, E.G. Rud and Sons set a #7 rebar with an aluminum cap after County Rd. 2 was reconstructed. New field ties were taken.