

CERTIFICATE OF LOCATION OF GOVERNMENT CORNER

NORTH QUARTER Corner of Section 14, Township 38, Range 24, 4TH P.M.

STATE OF MINNESOTA, County of KANABEC

At the corner location shown on the sketch:

FOUND THIS MONUMENT
AND ESTABLISHED G.P.S. COORDINATES ON ITS LOCATION.

Kanabec County U.S. Survey Feet Coordinates
NAD 1983, HARN 1996 Adjustment
Obtained by RTK GPS Observation

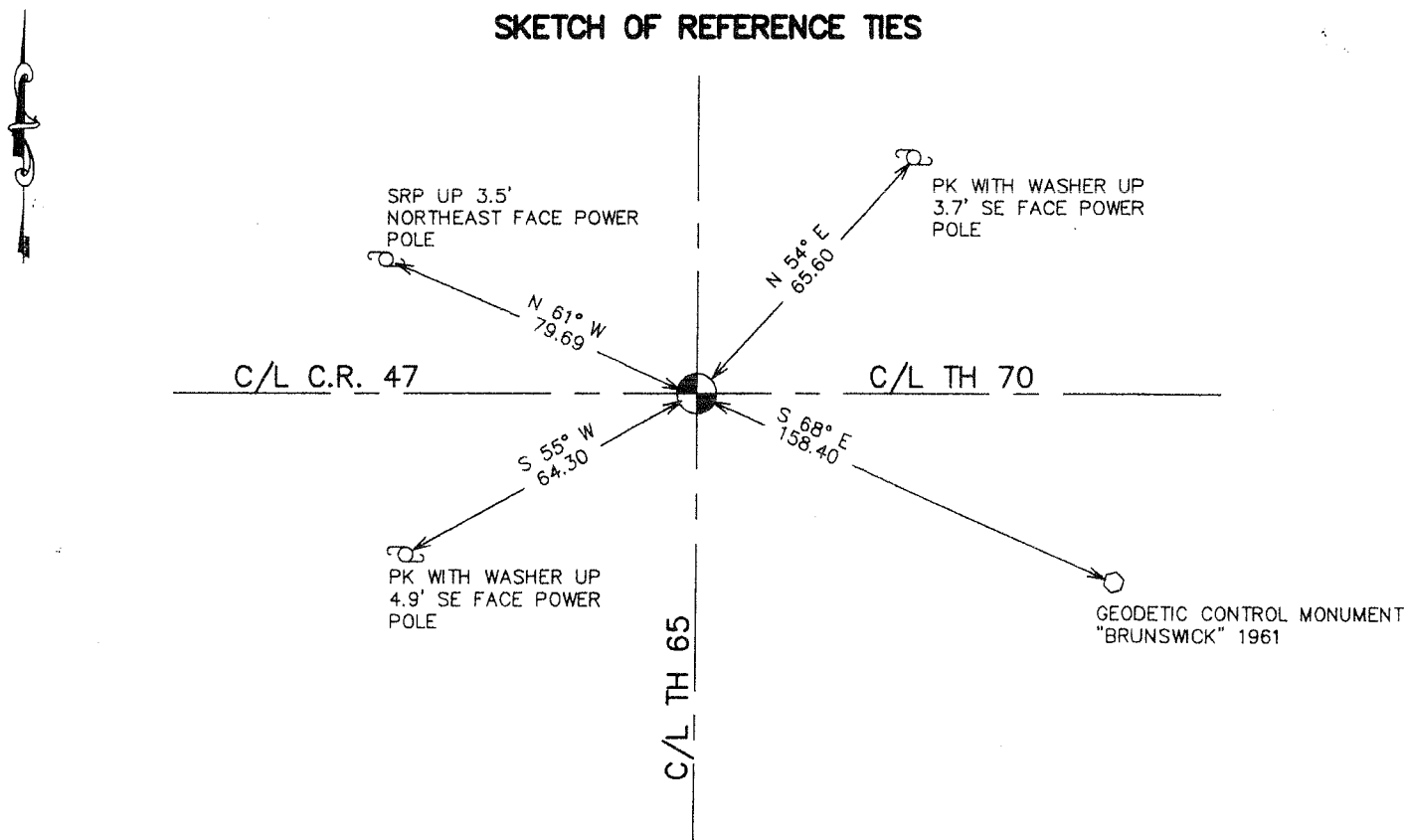
Northing= 121889.51

Easting= 398767.98

Note: NAD 1983, HARN 1996 Adjustment
coordinates are NOT compatible with
NAD 1983 coordinates

Note: 1 Meter=3937/1200 U.S. Survey Feet

SKETCH OF REFERENCE TIES



Statement of evidence relative to this corner location is on back of page.

I hereby certify that this document and the data contained herein was prepared by me or under my direct supervision.

Ernest Rud
Signature

11-1-2006
Date

Registration No. Minn No 9808

Land Surveyor, Professional Engineer

County Surveyor, County Engineer

OFFICE OF THE COUNTY RECORDER

County of _____

I hereby certify that this document was filed in the County Recorder's office at _____ M. on the _____ day of _____ A.D., 20____

County Recorder _____

BY _____ Deputy

DOCUMENT NO. _____

NORTH QUARTER CORNER SECTION 14, T38, R24

STATEMENT OF EVIDENCE

THE ORIGINAL PUBLIC LAND SURVEY WAS RUN IN 1855. NO EVIDENCE REMAINS FROM THIS ORIGINAL SURVEY.

A 1944, MINNESOTA DEPARTMENT OF TRANSPORTATION CONSTRUCTION PLANS SHOWS THE NORTH QUARTER OF SECTION 14 AS A 1 X 2 STAKE OVER A POINTED ROCK LOCATED ONE FOOT RIGHT OF POT 334+41.

A 1964, MINNESOTA DEPARTMENT OF TRANSPORTATION CONSTRUCTION PLANS SHOWS THE NORTH QUARTER OF SECTION 14 IS LOCATED 1.1 FOOT WEST OF THE TH 65 CENTERLINE STATION 334+41 AND AT THE INTERSECTION OF TH 70.

IN JUNE, 1970, N.C. HOIUM RECOVERED A SPIKE IN CONCRETE AT THE LOCATION OF THE NORTH QUARTER OF SECTION 14 MATCHING HIGHWAY DEPARTMENT DATA. HOIUM PLACED A RR SPIKE IN CONCRETE AT THE LOCATION OF THE NORTH QUARTER OF SECTION 14 AT THAT TIME. FIVE REFERENCE TIES WERE ESTABLISHED AND THE CERTIFICATE OF LOCATION WAS FILED WITH THE KANABEC COUNTY REGISTER OF DEEDS.

IN MAY, 2004, E.G. RUD CONDUCTED A SURVEY AROUND SECTIONS 8, 9, 10, AND 11. THEY DID NOT RECOVER THE NORTH QUARTER OF SECTION 14 IN THEIR FIELD WORK. E.G. RUD COMPUTED THE SECTION BREAKDOWN FOR SECTION 11 IN KANABEC COUNTY COORDINATES AT THE TIME.

ON JULY 12, 2006 THE MINNESOTA DEPARTMENT OF TRANSPORTATION SEARCHED FOR THE NORTH QUARTER OF SECTION 14 USING RUD'S POSITION FROM HIS 2004 BREAKDOWN AND COULD NOT FIND THE MONUMENT OR TIES FROM THE WORK DONE BY MR. HOIUM IN 1970.

ON AUGUST 4, 2006 THE MINNESOTA DEPARTMENT OF TRANSPORTATION EXCAVATED WITH A BACKHOE AND RECOVERED A 1" X 2" WOOD STAKE 4.5 FEET BELOW THE TH 65 SURFACE AT THE LOCATION OF THE NORTH QUARTER OF SECTION 14. THE MINNESOTA DEPARTMENT OF TRANSPORTATION ACCEPTS THIS STAKE AS A PERPETUATION OF THE QUARTER CORNER AS DESCRIBED ON THE 1944 CONSTRUCTION PLAN. THE OBSERVED COORDINATES MATCH CLOSELY WITH THOSE COMPUTED BY RUD IN 2004. A MINNESOTA DEPARTMENT OF TRANSPORTATION CAST IRON MONUMENT WAS PLACED 0.6' BELOW THE SURFACE OF TH65 AT THE LOCATION OF THE FOUND WOOD STAKE. MN/DOT ACCEPTS THIS MONUMENT AS THE CORRECT LOCATION FOR THE CORNER.

FOR DETAILS AND SURVEY ANALYSIS, CONTACT THE MINNESOTA DEPARTMENT OF TRANSPORTATION DISTRICT SURVEYS OFFICE IN BAXTER, MINNESOTA.

ON AUGUST 24, 2006 E.G. RUD AND SONS ESTABLISHED KANABEC COUNTY COORDINATES ON THIS CAST IRON MONUMENT USING G.P.S. EQUIPMENT.