

CERTIFICATE OF LOCATION OF GOVERNMENT CORNER

NORTHEAST Corner of Section 15, Township 38, Range 24, 4TH P.M.
 STATE OF MINNESOTA, County of KANABEC

At the corner location shown on the sketch:

FOUND A CAST IRON MONUMENT

Kanabec County U.S. Survey Feet Coordinates
 NAD 1983, HARN 1996 Adjustment
 Obtained by RTK GPS Observation

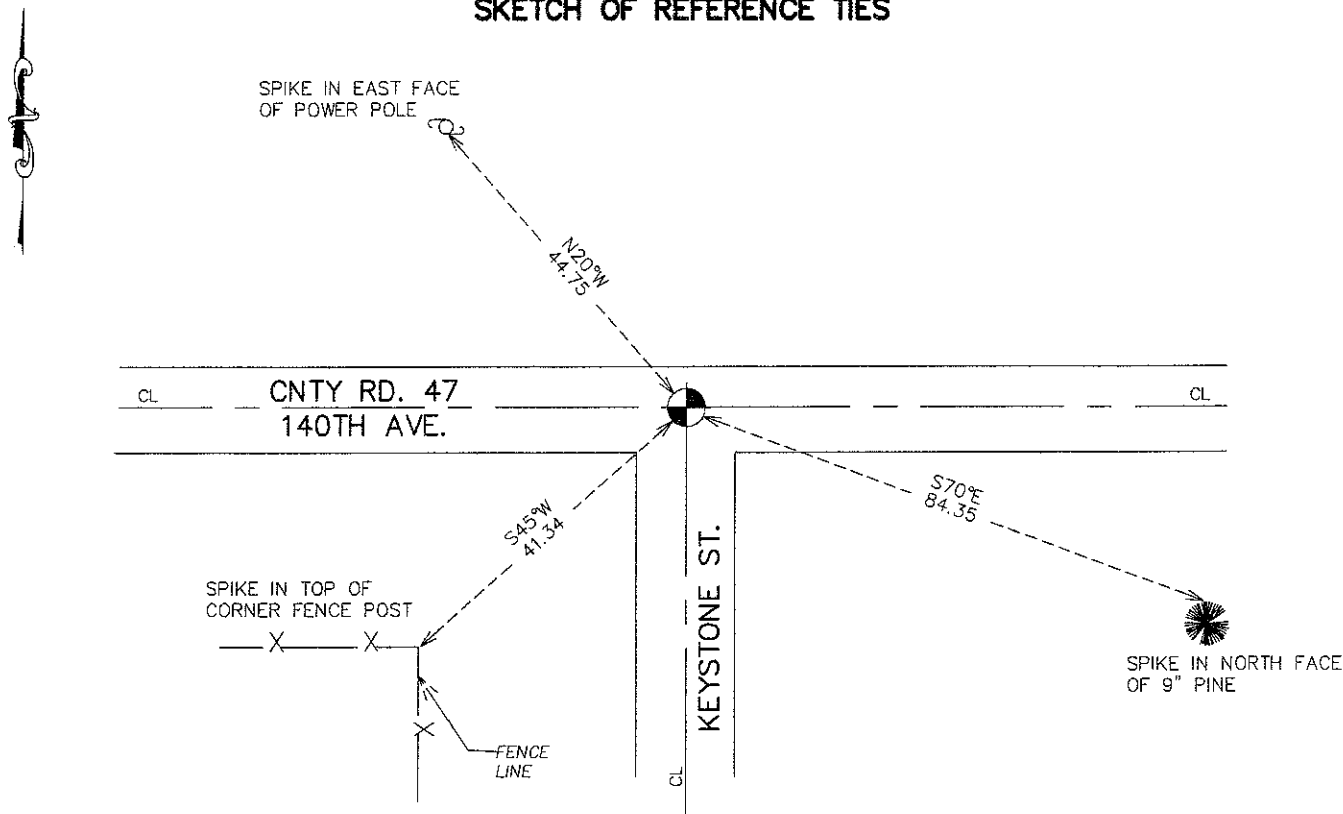
Northing= 121859.79

Easting= 396132.61

Note: NAD 1983, HARN 1996 Adjustment
 coordinates are NOT compatible with
 NAD 1983 coordinates

Note: 1 Meter=3937/1200 U.S. Survey Feet

SKETCH OF REFERENCE TIES



Statement of evidence relative to this corner location is on back of page.

I hereby certify that this document and the data contained herein was prepared by me or under my direct supervision.

Ernest Rud
 Signature

7-18-2011
 Date

Registration No. 9808

Land Surveyor, Professional Engineer
 County Surveyor, County Engineer

OFFICE OF THE COUNTY RECORDER

County of _____

I hereby certify that this document was filed in the County Recorder's office at _____ M. on the _____ day of _____ A.D., 20 _____

County Recorder _____

BY _____ Deputy

DOCUMENT NO. _____

NORTHEAST CORNER SECTION 15, TOWNSHIP 38, RANGE 24

STATEMENT OF EVIDENCE

A WOOD POST WAS SET AS THE ORIGINAL CORNER BY DEPUTY SURVEYOR SILAS BERNARD ON JULY 26, 1855 AND 4 BEARING TREES WERE ESTABLISHED. NO VISIBLE EVIDENCE REMAINS FOR THE CORNER OR BEARING TREES.

IN JUNE 1970 NORM HOIUM FOUND A 1/2 INCH IRON PIPE AT THE CENTERLINE INTERSECTION OF AN EAST-WEST ROAD AND A ROAD RUNNING SOUTH. HE REPLACED THIS IRON PIPE WITH A CAST IRON MONUMENT AND TOOK 5 TIES TO THE CORNER. THE MONUMENT AND TIES DID NOT REMAIN IN JUNE OF 2003. DALE ANDERSON WAS DOING A SURVEY IN SECTION 14 AND NEEDED THIS CORNER. AN AREA WAS EXCAVATED WITH THE COUNTY BACKHOE 20 FEET EAST-WEST AND 8 FEET NORTH-SOUTH, BUT NO EVIDENCE COULD BE FOUND. THEREFORE THE CORNER WAS RESET AT THE CENTERLINE INTERSECTION OF THE ROADS AND KANABEC COUNTY COORDINATES WERE ESTABLISHED ON THIS POSITION USING GLOBAL POSITIONING SYSTEM (G.P.S.) EQUIPMENT. THIS LOCATION FIT WELL WITH DISTANCES TO THE CORNER MEASURED IN 1893.