

CERTIFICATE OF LOCATION OF GOVERNMENT CORNER

NORTH QUARTER Corner of Section 26, Township 38, Range 24, 4TH P.M.
 STATE OF MINNESOTA, County of KANABEC

At the corner location shown on the sketch:
 On 06/05/2003 Set a #7 Rebar with aluminum cap.

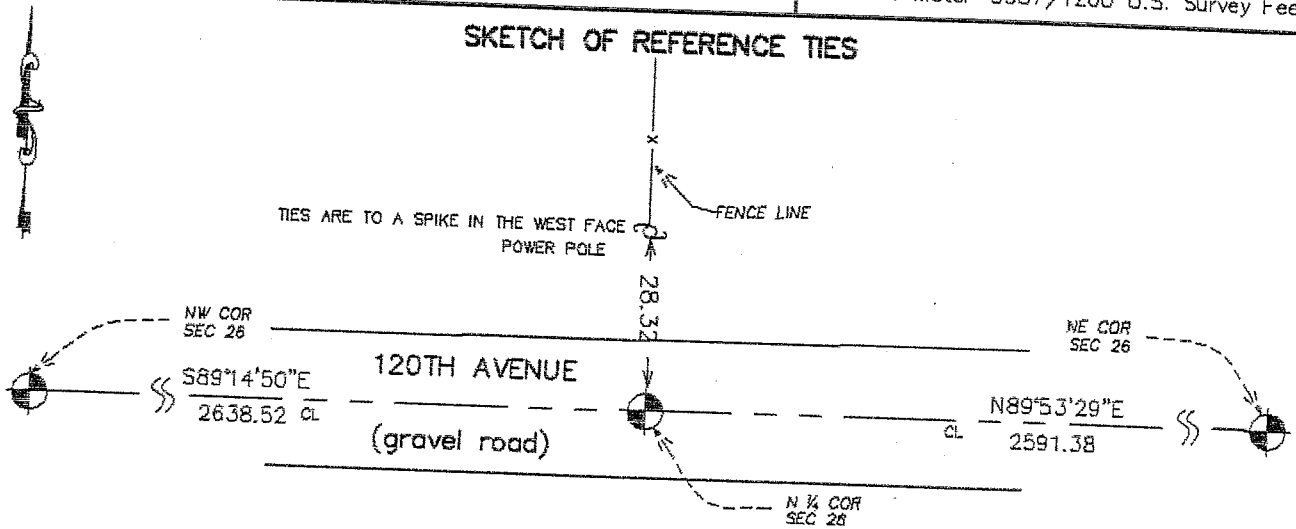
Kanabec County U.S. Survey Feet Coordinates
 NAD 1983, HARN 1996 Adjustment
 Obtained by RTK GPS Observation

Northing= 111186.942
 Easting= 398727.289

Note: NAD 1983, HARN 1996 Adjustment
 coordinates are NOT compatible with
 NAD 1983 coordinates

Note: 1 Meter=3937/1200 U.S. Survey Feet

SKETCH OF REFERENCE TIES



Statement of evidence relative to this corner location is on back of page.

I hereby certify that this document and the data contained herein was prepared by me or under my direct supervision.

Ernest Hud
 Signature

8-08-2003
 Date

Registration No. 9808

- Land Surveyor, Professional Engineer
 County Surveyor, County Engineer

OFFICE OF THE COUNTY RECORDER

County of _____
 I hereby certify that this document was filed in the County Recorder's office at _____ M. on the _____ day of _____ A.D., 20____

County Recorder _____
 BY _____ Deputy

DOCUMENT NO. _____

STATEMENT OF EVIDENCE

Original corner was set by Silas Barnard in 1855. No evidence of original corner or bearing trees remain.

In Book 2 of Surveys, Page 303 a survey of Section 23 dated May 7, 1901 by John Nelson is recorded. On this survey John shows he set a stone for the South Quarter corner of Section 23 and took two ties. These tie trees no longer remain.

In February 2003 we made a survey of Sections 22, 23, 26, 27, and 28 to locate corners and tie in occupation lines.

On June 5, 2003 we excavated a hole 15 feet east-west by 6 feet north-south. This was on the centerline of a township road and a fence line to the north.

We found a stone which had been hit by a piece of equipment and broken at this location. This was the only stone in the excavation. Upon examination there was half of the "x" on the stone we found. We believe this to be the same stone that John Nelson had set in 1901. We set a #7 rebar with aluminum cap, took ties and established Kanabec County Coordinates on the monument.