

CERTIFICATE OF LOCATION OF GOVERNMENT CORNER

EAST QUARTER Corner of Section 27, Township 38, Range 24, 4TH P.M.
 STATE OF MINNESOTA, County of KANABEC

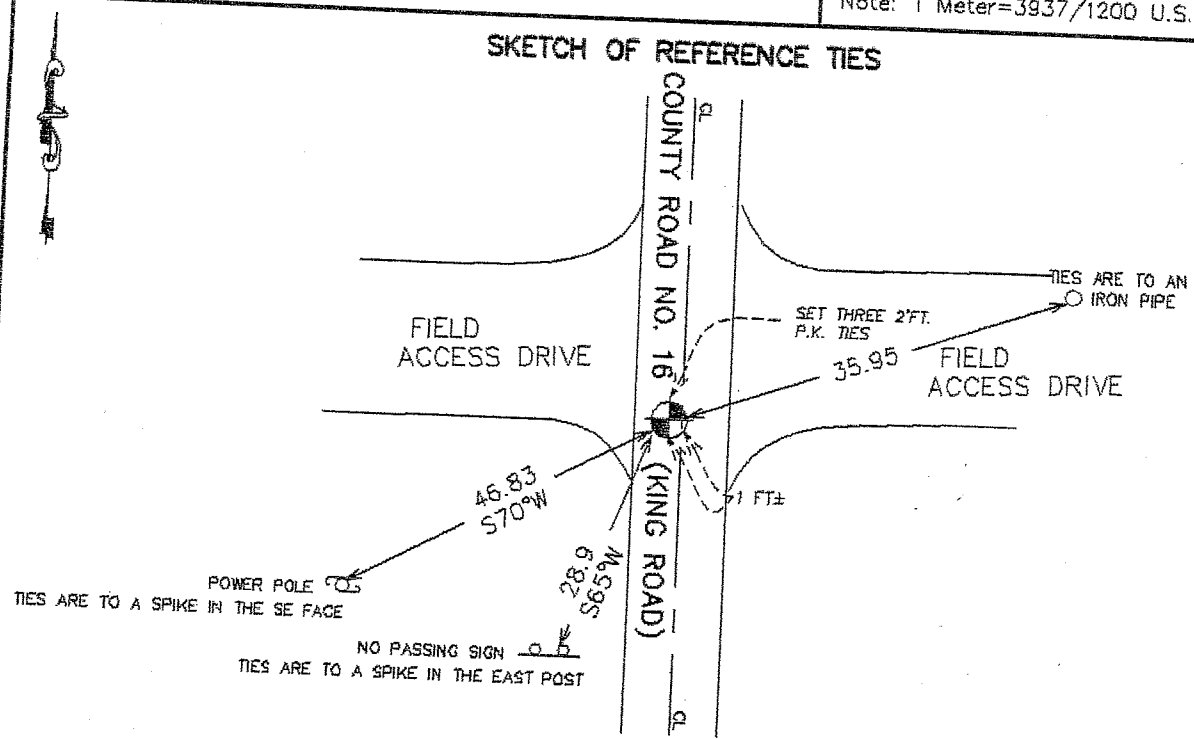
At the corner location shown on the sketch:
 On 02/19/2003 Found a Kanabec County Aluminum Monument.
 Down 1 foot.

Kanabec County U.S. Survey Feet Coordinates
 NAD 1983, HARN 1996 Adjustment
 Obtained by RTK GPS Observation

Northing= 108557.840
 Easting= 396075.022

Note: NAD 1983, HARN 1996 Adjustment
 coordinates are NOT compatible with
 NAD 1983 coordinates
 Note: 1 Meter=3937/1200 U.S. Survey Feet

SKETCH OF REFERENCE TIES



Statement of evidence relative to this corner location is on back of page.

I hereby certify that this document and the data contained herein was prepared by me or under my direct supervision.

Ernest Blud Signature 8-08-2003 Date

Registration No. 9808

Land Surveyor, Professional Engineer
 County Surveyor, County Engineer

OFFICE OF THE COUNTY RECORDER

County of _____

I hereby certify that this document was filed in the County Recorder's office at _____ M. on the _____ day of _____ A.D., 20____

County Recorder _____
 BY _____ Deputy

DOCUMENT NO. _____

STATEMENT OF EVIDENCE

On February 19, 2003 we a found Kanabec County monument set by M.B. Rude in the centerline of road, down 0.5 feet. We took new ties and established Kanabec County coordinates on monument.