

CERTIFICATE OF LOCATION OF GOVERNMENT CORNER

NORTH QUARTER Corner of Section 35, Township 38, Range 24, 4TH P.M.

STATE OF MINNESOTA, County of KANABEC

At the corner location shown on the sketch:
SET A #7 REBAR 24" LONG WITH ALUMINUM CAP.

Kanabec County U.S. Survey Feet Coordinates
NAD 1983, HARN 1996 Adjustment
Obtained by RTK GPS Observation

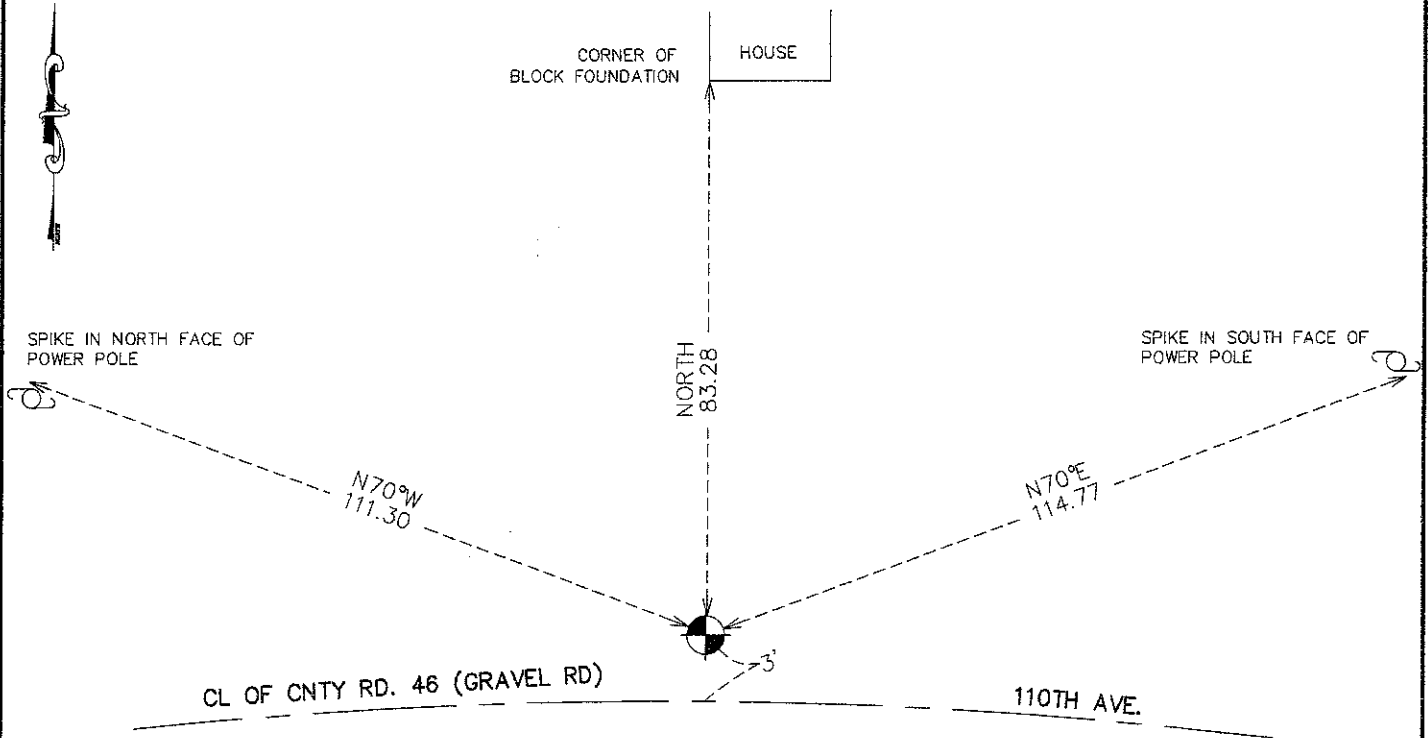
Northing= 105962.19

Easting= 398660.67

Note: NAD 1983, HARN 1996 Adjustment
coordinates are NOT compatible with
NAD 1983 coordinates

Note: 1 Meter=3937/1200 U.S. Survey Feet

SKETCH OF REFERENCE TIES



Statement of evidence relative to this corner location is on back of page.

I hereby certify that this document and the data contained herein was prepared by me or under my direct supervision.

Ernest Lund
Signature

7-18-2011
Date

Registration No. 9808

- Land Surveyor, Professional Engineer
- County Surveyor, County Engineer

OFFICE OF THE COUNTY RECORDER

County of _____

I hereby certify that this document was filed in the County Recorder's office at _____ M. on the

_____ day of _____ A.D., 20____

County Recorder _____

BY _____ Deputy

DOCUMENT NO. _____

N1/4 CORNER, SEC. 35, T38, R24

STATEMENT OF EVIDENCE

THE ORIGINAL GOVERNMENT POST WAS SET BY DEPUTY SURVEYOR SILAS BARNARD ON AUG. 10, 1855 AND 2 BEARING TREES NOTED AS:

8" WHITE OAK @ 10 LINKS BEARING S42°W

6" WHITE OAK @ 45 LINKS BEARING N15°E

NO VISIBLE EVIDENCE REMAINS FOR THE CORNER OR BEARING TREES TODAY.

ON DEC. 21, 1904 JOHN NELSON RECORDED A SURVEY ON PAGE 35 OF BOOK 2 OF 2 OF SURVEYS IN KANABEC COUNTY OFFICES. JOHN STATED THAT ALL SECTION CORNERS WERE GOOD GOVERNMENT CORNERS, BUT DID NOT RECORD ANY NEW TIES.

THIS CORNER FALLS IN THE CENTERLINE OF A GRAVEL ROAD RUNNING EAST-WEST AND A FENCE LINE RUNNING SOUTH. A POINT WAS SET AND MATHEMATICAL INFORMATION WAS COMPARED TO JOHN NELSON'S SURVEY WHICH AGREES VERY GOOD. A MONUMENT WAS SET AT THIS LOCATION, TIES WERE TAKEN AND KANABEC COUNTY COORDINATES WERE ESTABLISHED ON THIS POSITION.

NO EXCAVATIONS WERE MADE AS THIS LOCATION FELL IN A CUT SECTION OF THE ROADWAY.