

CERTIFICATE OF LOCATION OF GOVERNMENT CORNER

EAST QUARTER Corner of Section 34, Township 38, Range 24, 4TH P.M.
 STATE OF MINNESOTA, County of KANABEC

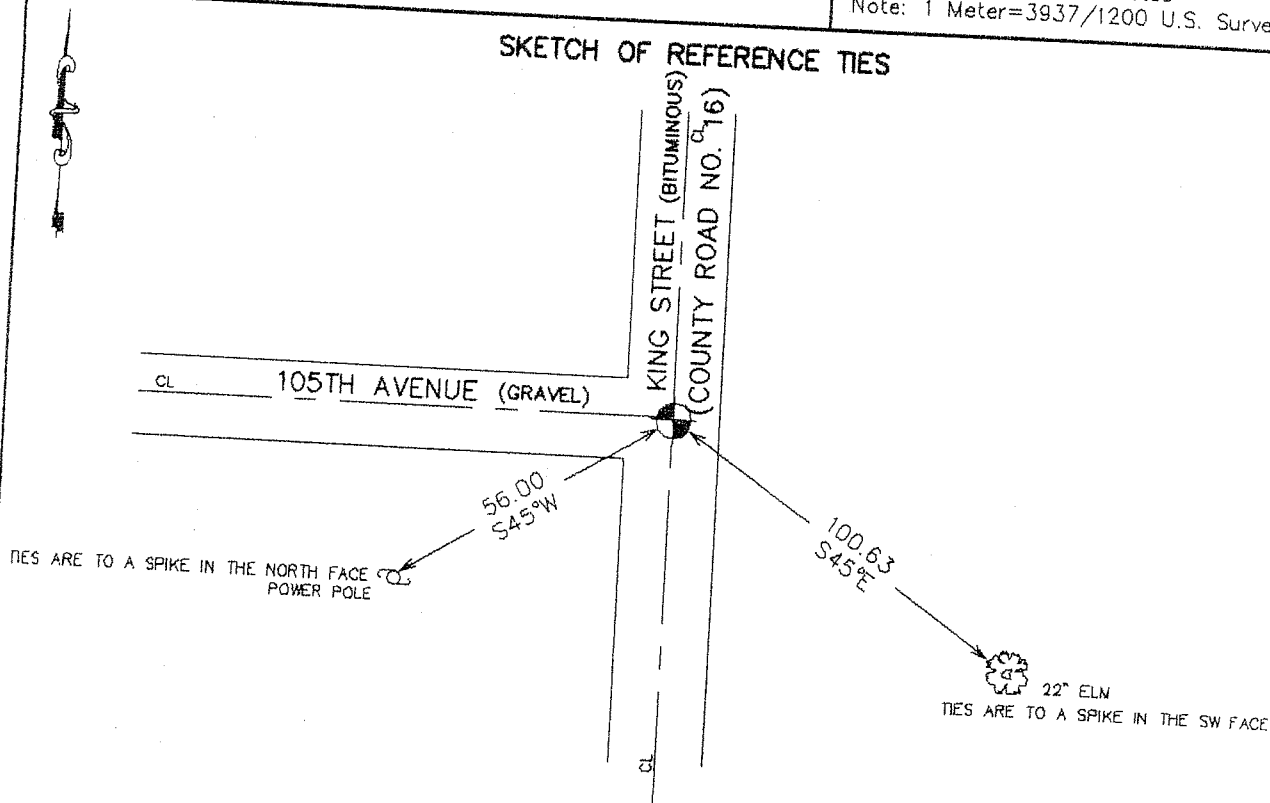
At the corner location shown on the sketch:
 On 04/ /2003 Set a Kanabec County Monument.

Kanabec County U.S. Survey Feet Coordinates
 NAD 1983, HARN 1996 Adjustment
 Obtained by RTK GPS Observation

Northing= 103295.088
 Easting= 396056.947

Note: NAD 1983, HARN 1996 Adjustment
 coordinates are NOT compatible with
 NAD 1983 coordinates
 Note: 1 Meter=39.37/1200 U.S. Survey Feet

SKETCH OF REFERENCE TIES



Statement of evidence relative to this corner location is on back of page.

I hereby certify that this document and the data contained herein was prepared by me or under my direct supervision.

Ernest Rud
 Signature

11-3-2003
 Date

Registration No. 9808

Land Surveyor, Professional Engineer
 County Surveyor, County Engineer

OFFICE OF THE COUNTY RECORDER

County of _____
 I hereby certify that this document was filed in the County Recorder's office at _____ M. on the _____ day of _____ A.D., 20____

County Recorder _____
 BY _____ Deputy

DOCUMENT NO. _____

STATEMENT OF EVIDENCE

From Tie Sheet # 655

All of the original bearing trees are now gone.

In 1901, John Nelson made a survey in Section 34, recorded in surveyor's record book 2, page 5. This record shows he used the Southeast corner of Section 34, but does not show what was set.

On August 19, 1982, we ran a survey along the east lines of Section's 22, 27 and 34 to locate existing monument and lines of occupation.

This corner is at the intersection of roads north-south and west.

On August 24, 1982, we made an excavation with the county's backhoe.

At 2.5 feet below the surface we found a 5" square pointed post 2 feet long.

I accepted the pointed post as the original corner location perpetuated by John Nelson in 1901 and set a 4" by 17" cast iron monument 6" below the surface to replace the post.

On September 21, 1982, after the road had been resurfaced we set a 1/2" iron pipe a plastic cap marked "R.L.S. No. 8195" on top of the cast iron monument, flush with the surface.

→ In April 2003 we reset this corner using MBR mathematical information. We took new ties and established Kanabec County Coordinates on the monument.