

# CERTIFICATE OF LOCATION OF GOVERNMENT CORNER

NORTHWEST Corner of Section 12, Township 38, Range 24, 4TH P.M.

STATE OF MINNESOTA, County of KANABEC

At the corner location shown on the sketch:  
On 05/ /2004 Found a Kanabec County Monument.

Kanabec County U.S. Survey Feet Coordinates  
NAD 1983, HARN 1996 Adjustment  
Obtained by RTK GPS Observation

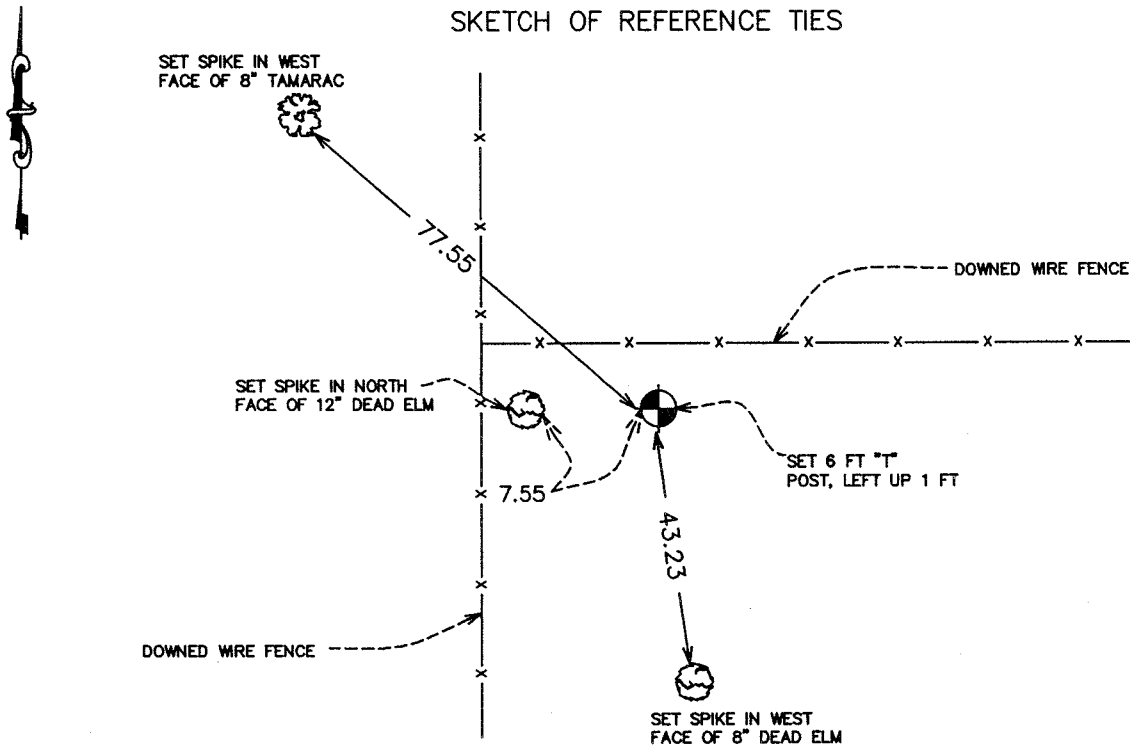
Northing= 127066.917

Easting= 401424.768

Note: NAD 1983, HARN 1996 Adjustment  
coordinates are NOT compatible with  
NAD 1983 coordinates

Note: 1 Meter=3937/1200 U.S. Survey Feet

SKETCH OF REFERENCE TIES



Statement of evidence relative to this corner location is on back of page.

I hereby certify that this document and the data contained herein was prepared by me or under my direct supervision.

*Ernst Rud*  
Signature

6-14-2004  
Date

Registration No. 9808

Land Surveyor,      [ ] Professional Engineer

[ ] County Surveyor,      [ ] County Engineer

### OFFICE OF THE COUNTY RECORDER

County of \_\_\_\_\_

I hereby certify that this document was filed in the County Recorder's office at \_\_\_\_\_ M. on the \_\_\_\_\_ day of \_\_\_\_\_ A.D., 20\_\_\_\_

County Recorder \_\_\_\_\_

BY \_\_\_\_\_ Deputy

**DOCUMENT NO.** \_\_\_\_\_

STATEMENT OF EVIDENCE  
(FROM TIE SHEET 972)

Research at the County Surveyor's Office, County Recorder's Office, County Engineers Office, and Township Records at the Auditor's Office revealed nothing.

It was mentioned in the ties to the southwest corner of Section 12 that N.C. Hoium, L.S., had worked in Section 11 (to the west), so I contacted him. His notes indicate he set an iron in the swamp. He also gave us measurements along the south, east, and north lines of Section 11. Through field traverse, we tied into the North Quarter and southeast corners of Section 11 and reestablished a position for this corner based upon Hoium's measurements.

In the field, we surveyed to this position and find no evidence of the corner. However, N.C. Hoium's notes indicate a tie to an 8" elm at 7.55 feet. We find a dead 12" elm and 7.55 feet fits to the center of the tree (no nail). Hoium also indicates a "newer fence" 12 feet west of corner. We find a downed wire at 12 feet west of position. Hoium also indicates that the corner is on east-west fence. We found downed wire and old posts 2 feet north of position that if straightened up would fit the corner position.

Based upon the foregoing evidence, I have accepted the position for the corner based upon the Hoium information as the best evidence as to the location of the Northwest corner of Section 12, set a 6 foot by 1" steel "T" post, left up 1 foot at the corner, took new ties and filed this report.

(2004)

In May 2004, E.G. Rud ran a survey around Sections 8, 9, 10, & 11. We found the fence post set by Otto & Associates. This post fit the distances given on tie sheet 972 fairly well. We accepted this post and established Kanabec County Coordinates using G.P.S. equipment.