

# CERTIFICATE OF LOCATION OF GOVERNMENT CORNER

SOUTH QUARTER Corner of Section 12, Township 38, Range 24, 4TH P.M.

STATE OF MINNESOTA, County of KANABEC

At the corner location shown on the sketch:

FOUND THIS MONUMENT  
AND ESTABLISHED G.P.S. COORDINATES ON ITS LOCATION

Kanabec County U.S. Survey Feet Coordinates  
NAD 1983, HARN 1996 Adjustment  
Obtained by RTK GPS Observation

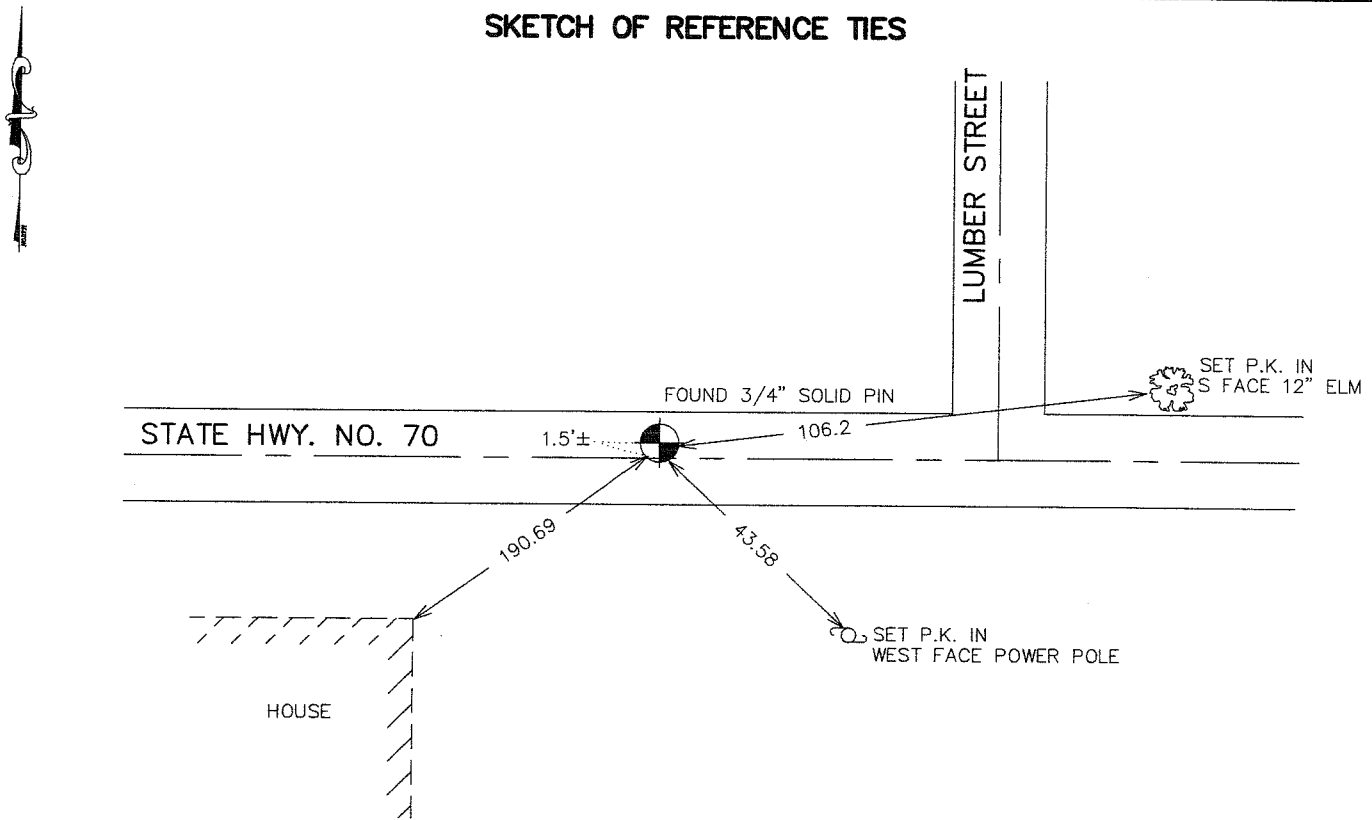
Northing= 121755.54

Easting= 404034.39

Note: NAD 1983, HARN 1996 Adjustment  
coordinates are NOT compatible with  
NAD 1983 coordinates

Note: 1 Meter=3937/1200 U.S. Survey Feet

## SKETCH OF REFERENCE TIES



Statement of evidence relative to this corner location is on back of page.

I hereby certify that this document and the data contained herein was prepared by me or under my direct supervision.

Ernest J. Rud  
Signature

4-12-2007  
Date

Registration No. Minn No 9808

Land Surveyor,       Professional Engineer

County Surveyor,       County Engineer

### OFFICE OF THE COUNTY RECORDER

County of \_\_\_\_\_

I hereby certify that this document was filed in the County Recorder's office at \_\_\_\_\_ M. on the \_\_\_\_\_ day of \_\_\_\_\_ A.D., 20\_\_\_\_

County Recorder \_\_\_\_\_

BY \_\_\_\_\_ Deputy

**DOCUMENT NO.** \_\_\_\_\_

## SOUTH QUARTER CORNER SECTION 12, T38, R24

### **STATEMENT OF EVIDENCE**

RESEARCH AT THE COUNTY RECORDERS OFFICE, COUNTY ENGINEERS OFFICE AND TOWNSHIP RECORDS AT THE AUDITORS OFFICE REVEALED NOTHING.

INITIAL RESEARCH AT THE STATE HIGHWAY DEPARTMENT REVEALED NOTHING.

ON JULY 20, 1998, OTTO ASSOCIATES, INC. FOUND A 3/4" SOLID IRON PIN ON CENTERLINE OF STATE HIGHWAY NO. 70 RUNNING EAST-WEST. SO THE STATE WAS AGAIN CONTACTED AND INFORMATION WAS FOUND THAT FROM THE 1920 HIGHWAY PLANS THAT THIS CORNER WAS LOCATED IN 1988.

THROUGH FIELD TRAVERSE OF THE SECTION, THE SOUTH QUARTER IS 2640.38 FEET FROM THE SOUTHWEST CORNER OF THE SECTION (STATE HIGHWAY DEPARTMENT MEASURES 2640.44 FEET) AND THE SOUTHEAST CORNER OF SECTION IS 2595.06 FEET FROM THE SOUTH QUARTER CORNER (STATE HIGHWAY DEPARTMENT MEASURES 2594.95 FEET.)

BASED UPON THE FOREGOING EVIDENCE ED OTTO ACCEPTED THE 3/4" SOLID IRON PIPE THAT WAS SET BY THE HIGHWAY DEPARTMENT AS THE BEST EVIDENCE AS TO THE LOCATION OF THE SOUTH QUARTER CORNER OF SECTION 12, TOOK TIES AND FILED THIS REPORT.

IN 2004 E.G. RUD AND SONS FOUND THIS MONUMENT AND MEASURED 2640.38 FEET TO THE SOUTHWEST CORNER AND 2595.08 FEET TO THE SOUTHEAST CORNER OF SECTION 12. KANABEC COUNTY COORDINATES WERE ESTABLISHED ON THIS CORNER USING G.P.S. EQUIPMENT.