

# CERTIFICATE OF LOCATION OF GOVERNMENT CORNER

NORTHEAST Corner of Section 14, Township 38, Range 24, 4TH P.M.  
 STATE OF MINNESOTA, County of KANABEC

At the corner location shown on the sketch:  
 On 05/ /2003 Found a Kanabec County Monument.

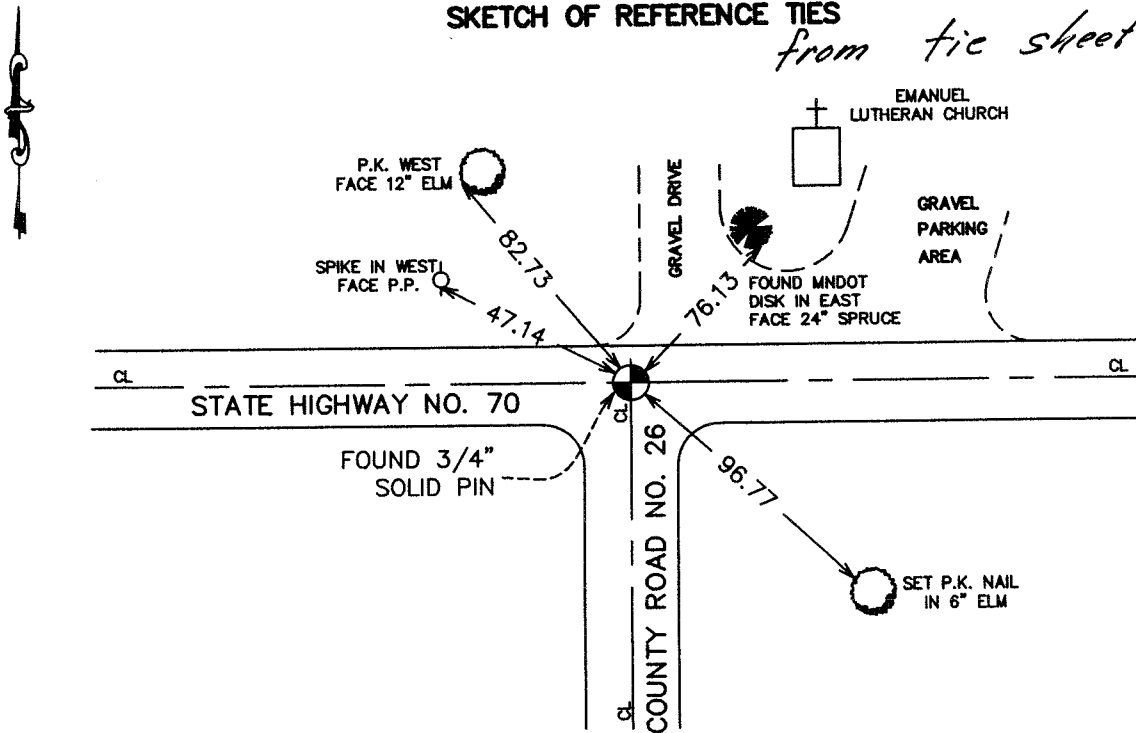
Kanabec County U.S. Survey Feet Coordinates  
 NAD 1983, HARN 1996 Adjustment  
 Obtained by RTK GPS Observation

Northing= 121815.13  
 Easting= 401394.647

Note: NAD 1983, HARN 1996 Adjustment  
 coordinates are NOT compatible with  
 NAD 1983 coordinates  
 Note: 1 Meter=3937/1200 U.S. Survey Feet

### SKETCH OF REFERENCE TIES

*from tie sheet 976*



Statement of evidence relative to this corner location is on back of page.

I hereby certify that this document and the data contained herein was prepared by me or under my direct supervision.

*Ernest J. Rud* 5-19-2004  
Signature Date

Registration No. 9808

Land Surveyor,     Professional Engineer  
 County Surveyor,     County Engineer

### OFFICE OF THE COUNTY RECORDER

County of \_\_\_\_\_  
 I hereby certify that this document was filed in the County Recorder's office at \_\_\_\_\_ M. on the \_\_\_\_\_ day of \_\_\_\_\_ A.D., 20\_\_\_\_

County Recorder \_\_\_\_\_  
 BY \_\_\_\_\_ Deputy

DOCUMENT NO. \_\_\_\_\_

STATEMENT OF EVIDENCE  
(FROM TIE SHEET 976)

Southwest Corner Section 12, Township 38, Range 24, Kanabec County, Minnesota.

Research at the County Recorder's Office and Township Records at the Auditor's Office revealed that in 1970, N.C. Hoium, L.S., found a 1/2" iron pipe "from County Highway Department Data" and did place a cast iron monument in its place.

On July 20, 1998, Otto Associates, Inc. found a 3/4" solid iron pin on centerline of State Highway No. 70 running east-west and County Road No. 46 to south. We checked the ties from Hoium's records and found a MnDOT disc and nail in a 24" spruce in the Northeast quadrant which is probably the 14" spruce Hoium called for. The distance from the spruce to the pin checks within 0.04. In the Northwest quadrant, there is a power pole without any nails in it, but the distance to the center of the pole fits the 46.28 feet that Hoium shows.

Through field traverse of the section, the South Quarter (another 3/4" solid pin) is 2640.44 feet from the Southwest corner of the section (State Highway Department measures 2640.38 feet) and the West Quarter corner of section is 2623.57 feet from the Southwest corner (Hoium measured 2623.33 feet).

(2003)

In May of 2003, we did a survey around Section 14 and found the solid rod as described above. We established Kanabec County Coordinates on this monument using G.P.S. equipment.