

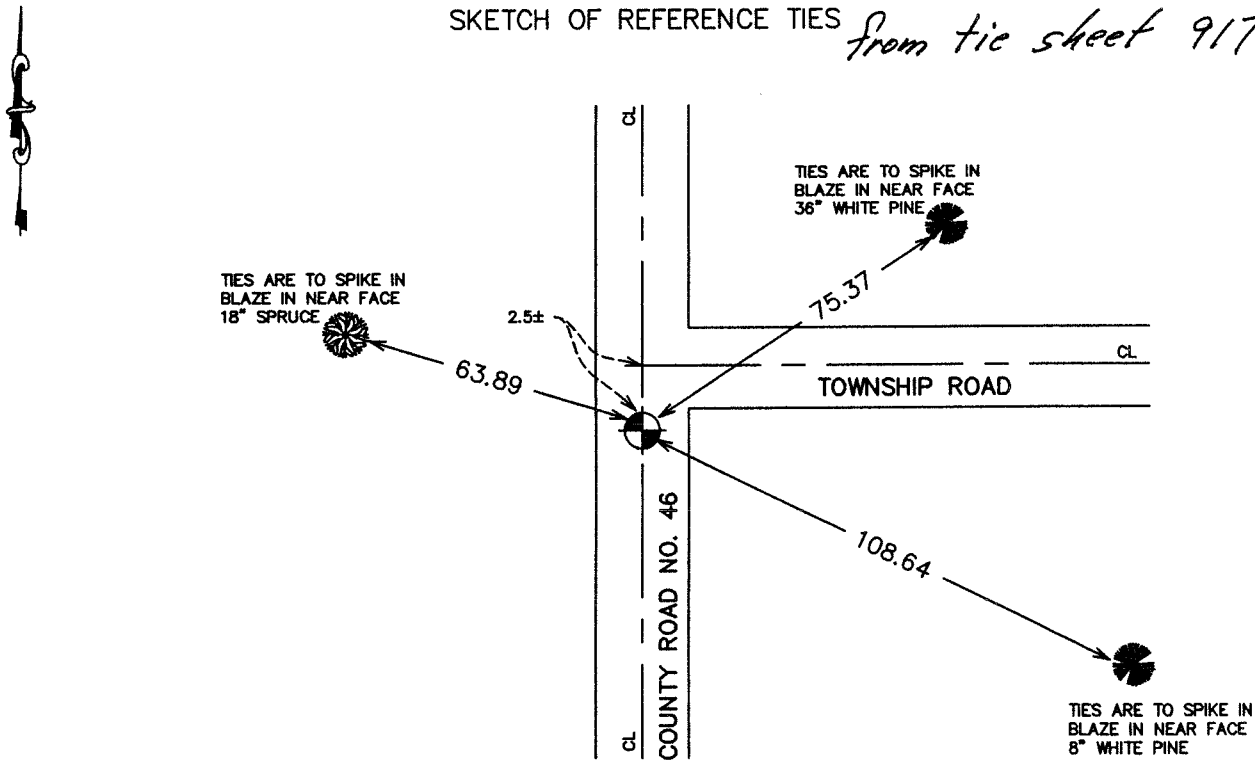
CERTIFICATE OF LOCATION OF GOVERNMENT CORNER

EAST QUARTER Corner of Section 14, Township 38, Range 24, 4TH P.M.
 STATE OF MINNESOTA, County of KANABEC

At the corner location shown on the sketch:
 On 05/ /2003 Found a Kanabec County Monument.

Kanabec County U.S. Survey Feet Coordinates
 NAD 1983, HARN 1996 Adjustment
 Obtained by RTK GPS Observation
 Northing= 119159.536
 Easting= 401378.625
 Note: NAD 1983, HARN 1996 Adjustment
 coordinates are NOT compatible with
 NAD 1983 coordinates
 Note: 1 Meter=3937/1200 U.S. Survey Feet

SKETCH OF REFERENCE TIES *from tie sheet 917*



Statement of evidence relative to this corner location is on back of page.

I hereby certify that this document and the data contained herein was prepared by me or under my direct supervision.

Ernest [Signature] 5-19-2004
Signature Date

Registration No. 9808

- Land Surveyor, Professional Engineer
 County Surveyor, County Engineer

OFFICE OF THE COUNTY RECORDER

County of _____
 I hereby certify that this document was filed in the County Recorder's office at _____ M. on the _____ day of _____ A.D., 20____
 County Recorder _____
 BY _____ Deputy

DOCUMENT NO. _____

STATEMENT OF EVIDENCE
(FROM TIE SHEET 917)

All of the original bearing trees are now gone.

In 1892, former County Surveyor, John Nelson, made a survey around Section 13, Township 38, Range 24, and found a rock at the place of the post, per records at the County Recorder's Office.

In January of 1995, we ran a survey around Section 14, Township 38, Range 24, to locate existing monuments, lines of occupation and establish search areas.

On June 19, 1995 we made a 3" by 15' by 21' excavation with a backhoe. No evidence of the corner was found in the excavation.

We set this corner in the center line of the north-south road and by proportioning John Nelson's measurements to the northeast and southeast corners of Section 14.

There is an angle point at the quarter corner and John Nelson's records also show an angle point at this corner.

(2003)

In May of 2003, we did a survey around Section 14 and found this monument set by M.B. Rude. We established Kanabec County coordinates on this monument using G.P.S. equipment.