

# CERTIFICATE OF LOCATION OF GOVERNMENT CORNER

\_\_\_\_\_ NORTH QUARTER \_\_\_\_\_ Corner of Section 24, Township 38, Range 24, 4TH P.M.

STATE OF MINNESOTA, County of KANABEC

At the corner location shown on the sketch:

SET A 1/2" IRON PIPE AND REGISTERED CAP #9808 ON TOP.

Kanabec County U.S. Survey Feet Coordinates  
NAD 1983, HARN 1996 Adjustment  
Obtained by RTK GPS Observation

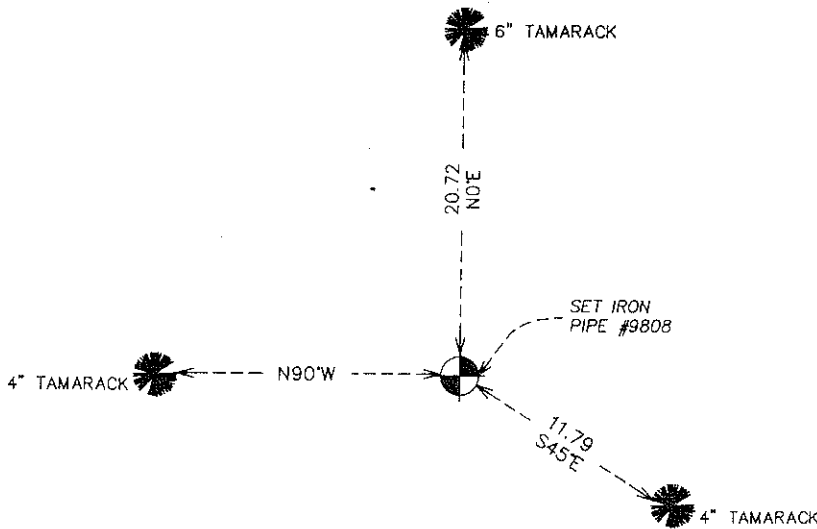
Northing= 116439.84

Easting= 404014.34

Note: NAD 1983, HARN 1996 Adjustment  
coordinates are NOT compatible with  
NAD 1983 coordinates

Note: 1 Meter=3937/1200 U.S. Survey Feet

## SKETCH OF REFERENCE TIES



Statement of evidence relative to this corner location is on back of page.

I hereby certify that this document and the data contained herein was prepared by me or under my direct supervision.

Ernest J. Rud  
Signature

2-07-2008  
Date

Registration No. 9808

Land Surveyor,  Professional Engineer

County Surveyor,  County Engineer

## OFFICE OF THE COUNTY RECORDER

County of \_\_\_\_\_

I hereby certify that this document was filed in the County Recorder's office at \_\_\_\_\_ M. on the

\_\_\_\_\_ day of \_\_\_\_\_ A.D., 20 \_\_\_\_\_

County Recorder \_\_\_\_\_

BY \_\_\_\_\_ Deputy

DOCUMENT NO. \_\_\_\_\_

NORTH QUARTER CORNER SECTION 24, TOWNSHIP 38, RANGE 24

**STATEMENT OF EVIDENCE**

THE ORIGINAL CORNER POST WAS SET BY DEPUTY SURVEYOR SILAS BARNARD ON JULY 19, 1855 AND 2 TAMARACKS ESTABLISHED FOR BEARING TREES. NO VISIBLE EVIDENCE REMAINS FOR THE CORNER OR BEARING TREES.

(1892)

IN BOOK A OF SURVEYS PAGE 8, JOHN NELSON RECORDED A SURVEY DATED APRIL 15, 1892 OF SECTION 13. THE SURVEY DOES NOT SHOW WHAT WAS USED FOR THE QUARTER CORNER BETWEEN SECTION 13 AND 24, BUT VARIATIONS AND DISTANCES ARE SHOWN.

IN BOOK A1 OF SURVEYS PAGE 148 C.K. HANDSCHU RECORDED A SURVEY OF PART OF NORTHEAST QUARTER OF SECTION 13. THIS SURVEY SHOWS THE CENTER OF SECTION 13 WAS IN PLACE, BUT NO REFERENCE TO THE QUARTER CORNER BETWEEN SECTIONS 13 AND 24.

(2007)

IN DECEMBER 2007 E.G. RUD & SONS, INC. RAN A SURVEY AROUND SECTION 13. NO MONUMENT COULD BE FOUND AT THIS CORNER ALTHOUGH A VERY OLD FENCE RUNNING EAST-WEST WAS LOCATED. THE CORNER WAS SET ON THE OLD FENCE LINE AT A PRO RATED DISTANCE (NELSONS CHAINAGE) BETWEEN THE NORTHEAST AND NORTHWEST CORNER OF SECTION 24. THIS IS WITHIN 5 FEET OF WHAT JOHN NELSON HAD RECORDED AND AGREES WITH THE ANGLE HANDSCHU RECORDED AT THE NORTH 1/16 CORNER WITHIN 00 DEGREES 00 MINUTES 45 SECONDS. A MONUMENT WAS SET AND KANABEC COUNTY COORDINATES WERE ESTABLISHED ON THIS POSITION.