

# CERTIFICATE OF LOCATION OF GOVERNMENT CORNER

NORTHEAST Corner of Section 23, Township 38, Range 24, 4TH P.M.

STATE OF MINNESOTA, County of KANABEC

At the corner location shown on the sketch:  
On 05/ /2003 Found a Kanabec County Monument.

Kanabec County U.S. Survey Feet Coordinates  
NAD 1983, HARN 1996 Adjustment  
Obtained by RTK GPS Observation

Northing= 116493.331

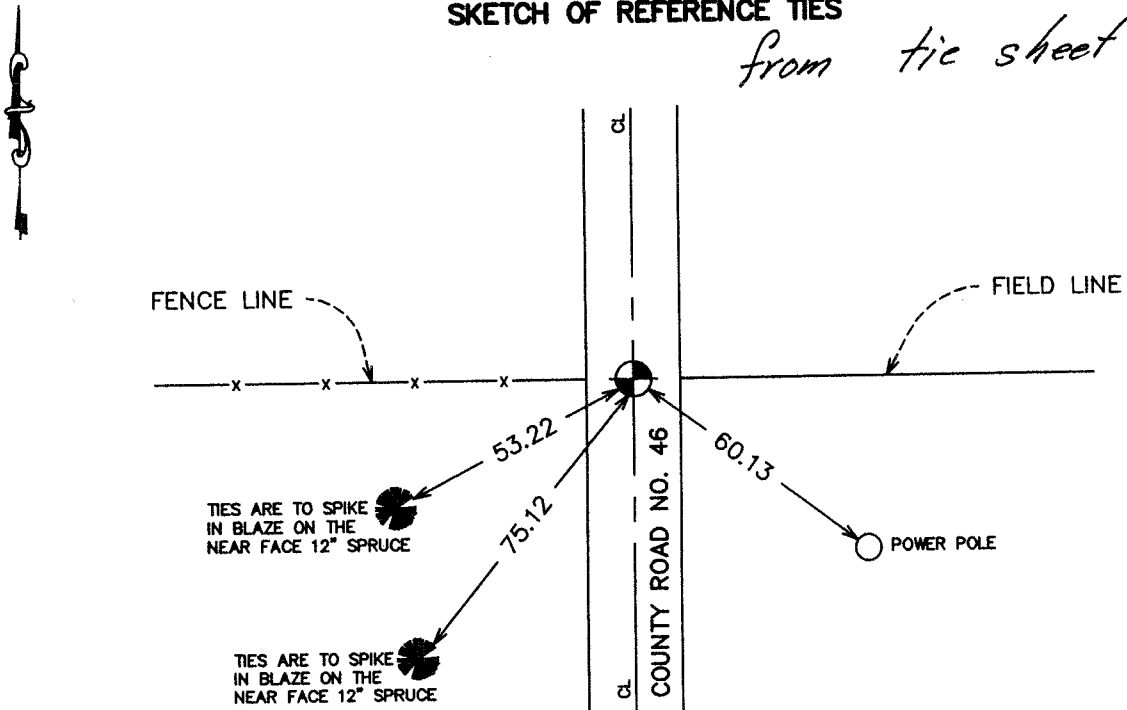
Easting= 401369.538

Note: NAD 1983, HARN 1996 Adjustment  
coordinates are NOT compatible with  
NAD 1983 coordinates

Note: 1 Meter=3937/1200 U.S. Survey Feet

## SKETCH OF REFERENCE TIES

*from tie sheet 915*



Statement of evidence relative to this corner location is on back of page.

I hereby certify that this document and the data contained herein was prepared by me or under my direct supervision.

*Ernest Reed*  
Signature

5-19-2004  
Date

Registration No. 9808

Land Surveyor, [ ] Professional Engineer

[ ] County Surveyor, [ ] County Engineer

## OFFICE OF THE COUNTY RECORDER

County of \_\_\_\_\_

I hereby certify that this document was filed in the County Recorder's office at \_\_\_\_\_ M. on the \_\_\_\_\_ day of \_\_\_\_\_ A.D., 20\_\_\_\_

\_\_\_\_\_ day of \_\_\_\_\_ A.D., 20\_\_\_\_

County Recorder \_\_\_\_\_

BY \_\_\_\_\_ Deputy

DOCUMENT NO. \_\_\_\_\_

STATEMENT OF EVIDENCE  
(FROM TIE SHEET 915)

All of the original government bearing trees are now gone.

In 1892, former County Surveyor, John Nelson, ran a survey around Section 13, Township 38, Range 24, and set a post at the southeast corner of Section 14, Township 38, Range 24.

In January of 1995, we ran a survey around Section 14, Township 38, Range 24, to locate existing monuments, lines of occupation and establish search areas.

On June 26, 1995, we made a 2' by 15' by 15' excavation with a backhoe and found a 10" by 12" by 12" sandstone with a cross mark that was set on top of a post which was now decayed. The found stone fits in harmony with occupation lines east-west and the center line of the County Road.

(2003)

In May 2003, we did a survey around Section 14 and located this monument. We established Kanabec County coordinates on the corner using G.P.S. equipment.