

CERTIFICATE OF LOCATION OF GOVERNMENT CORNER

NORTH QUARTER Corner of Section 25, Township 38, Range 24, 4TH P.M.

STATE OF MINNESOTA, County of KANABEC

At the corner location shown on the sketch:
On 10/24/2002 Set a KANABEC COUNTY MONUMENT.

Kanabec County U.S. Survey Feet Coordinates
NAD 1983, HARN 1996 Adjustment
Obtained by RTK GPS Observation

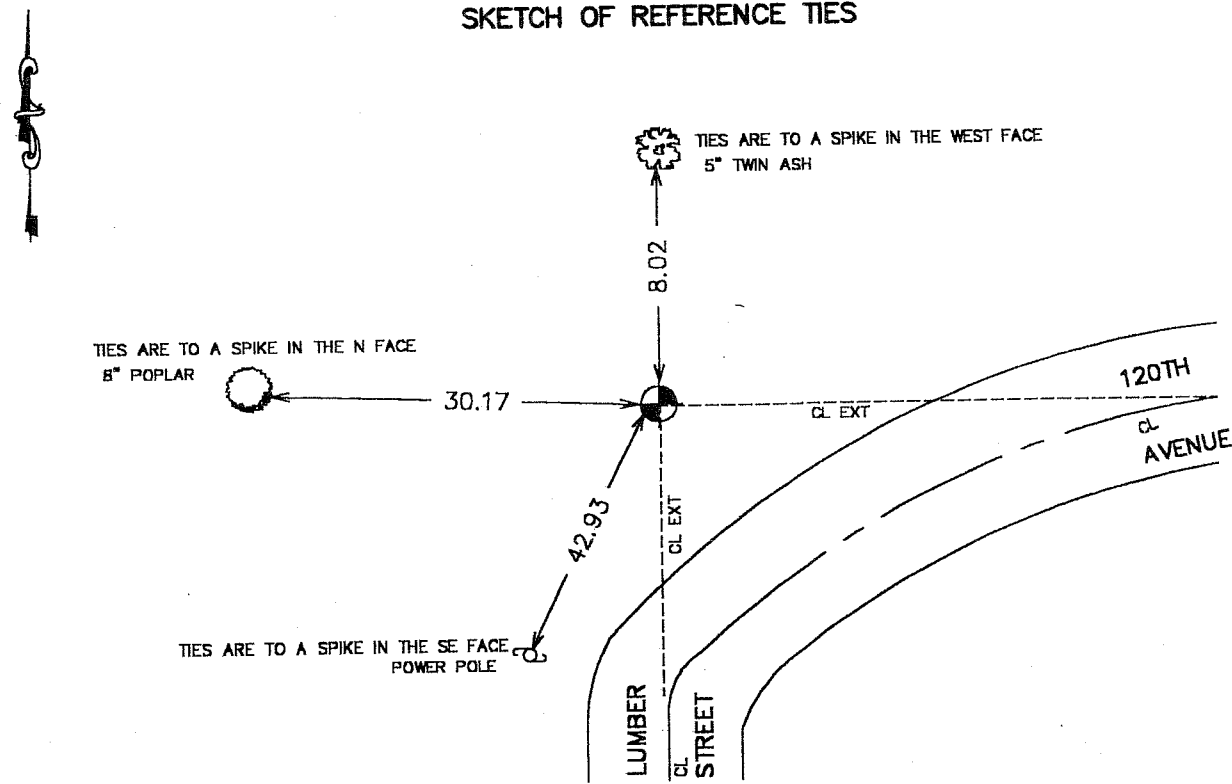
Northing= 111123.923

Easting= 403961.714

Note: NAD 1983, HARN 1996 Adjustment
coordinates are NOT compatible with
NAD 1983 coordinates

Note: 1 Meter=3937/1200 U.S. Survey Feet

SKETCH OF REFERENCE TIES



Statement of evidence relative to this corner location is on back of page.

I hereby certify that this document and the data contained herein was prepared by me or under my direct supervision.

Ernest L. Rud
Signature

1-21-2003
Date

Registration No. 9808

Land Surveyor, Professional Engineer

County Surveyor, County Engineer

OFFICE OF THE COUNTY RECORDER

County of _____

I hereby certify that this document was filed in the County Recorder's office at _____ M. on the _____ day of _____ A.D., 20____

County Recorder _____

BY _____ Deputy

DOCUMENT NO. _____

STATEMENT OF EVIDENCE

Original survey was set by Silas Bernard in June of 1855. Bearing trees no longer remain.

On December 13, 1904 John Nelson (county surveyor) made a survey of Section 25 and set a stone at North Quarter corner. Survey recorded in Book 2 of survey page 34. John Nelson also did a survey from Southeast corner to South Quarter corner to center as recorded in Book 2, page 12.

On April 5, 2002 we made a survey of Section 25 set control and tied in occupation lines. We set a 60 p spike at center line center line intersection and on line with old fence to the north.

On April 26, 2002 we excavated a hole 10 feet north-south by 25 feet east-west at this location. We did find a 9 inch boulder below our spike. No chiseled "x". We excavated 18 inches below original ground and found no other evidence. We set a monument at our location and took ties. This fits Nelson's survey within a foot from South Quarter corner and on a line from South Quarter to center to North Quarter corner. Established county coordinates for corner.