

CERTIFICATE OF LOCATION OF GOVERNMENT CORNER

SOUTH QUARTER Corner of Section 25, Township 38, Range 24, 4TH P.M.

STATE OF MINNESOTA, County of KANABEC

At the corner location shown on the sketch:
On 04/26/2002 Set a KANABEC COUNTY MONUMENT.

Kanabec County U.S. Survey Feet Coordinates
NAD 1983, HARN 1996 Adjustment
Obtained by RTK GPS Observation

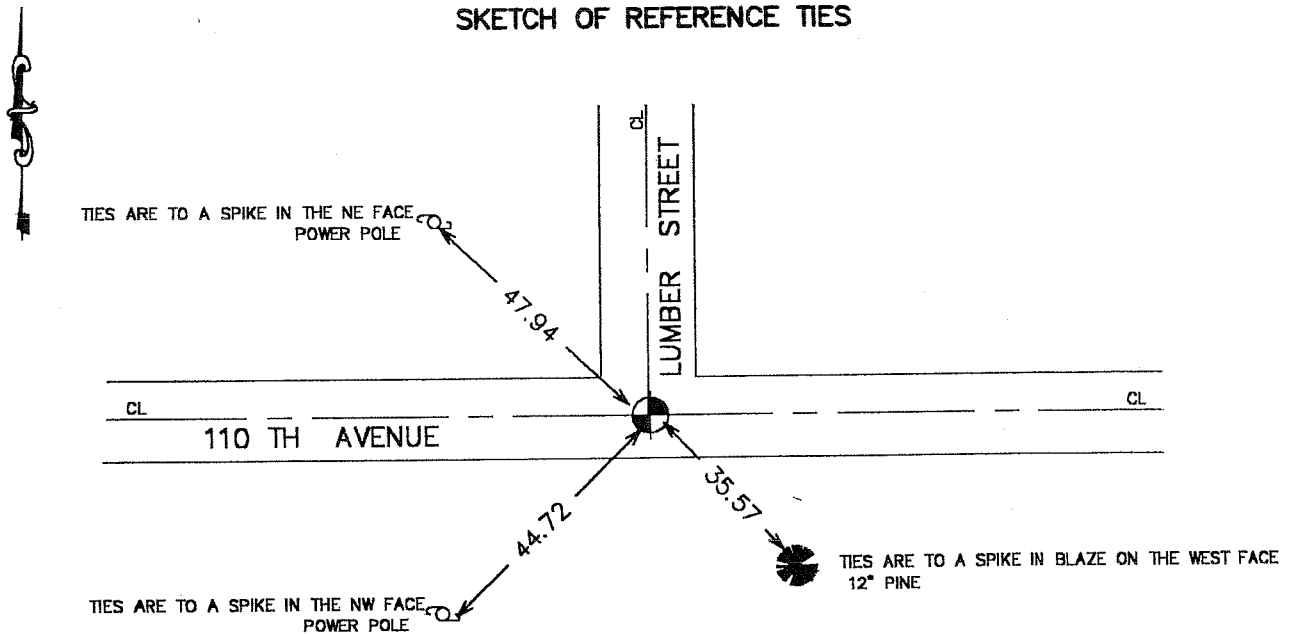
Northing= 105812.529

Easting= 403907.850

Note: NAD 1983, HARN 1996 Adjustment
coordinates are NOT compatible with
NAD 1983 coordinates

Note: 1 Meter=3937/1200 U.S. Survey Feet

SKETCH OF REFERENCE TIES



Statement of evidence relative to this corner location is on back of page.

I hereby certify that this document and the data contained herein was prepared by me or under my direct supervision.

Ernest Illud 1-21-2003
Signature Date

Registration No. 9808

Land Surveyor, Professional Engineer

County Surveyor, County Engineer

OFFICE OF THE COUNTY RECORDER

County of _____
I hereby certify that this document was filed in the County Recorder's office at _____ M. on the _____ day of _____ A.D., 20____

County Recorder _____

BY _____ Deputy

DOCUMENT NO. _____

STATEMENT OF EVIDENCE

Original corner was set by Silas Bernard in July of 1855. Bearing trees no longer remain.

John Nelson County Surveyor surveyed Section 25 on December 13, 1904 as recorded Book 2, Page 34. John Nelson also did a road survey on November 4, 1901 from the Southeast to South Quarter to center and placed a stone at South Quarter corner.

On April 5, 2002 we measured around Section 25 tying in occupation lines and setting control. We set a spike at centerline / centerline. On April 26, 2002 we excavated a 20 foot by 20 foot hole 2 feet below natural ground. We found a stone below our spike at the beginning of the topsoil. There was not a "x" on the stone. Accepted location of spike as best evidence. Set county coordinates on corner.