

# CERTIFICATE OF LOCATION OF GOVERNMENT CORNER

SOUTHWEST QUARTER Corner of Section 25, Township 38, Range 24, 4TH P.M.

STATE OF MINNESOTA, County of KANABEC

At the corner location shown on the sketch:  
On 04/26/2002 Set a KANABEC COUNTY MONUMENT.

Kanabec County U.S. Survey Feet Coordinates  
NAD 1983, HARN 1996 Adjustment  
Obtained by RTK GPS Observation

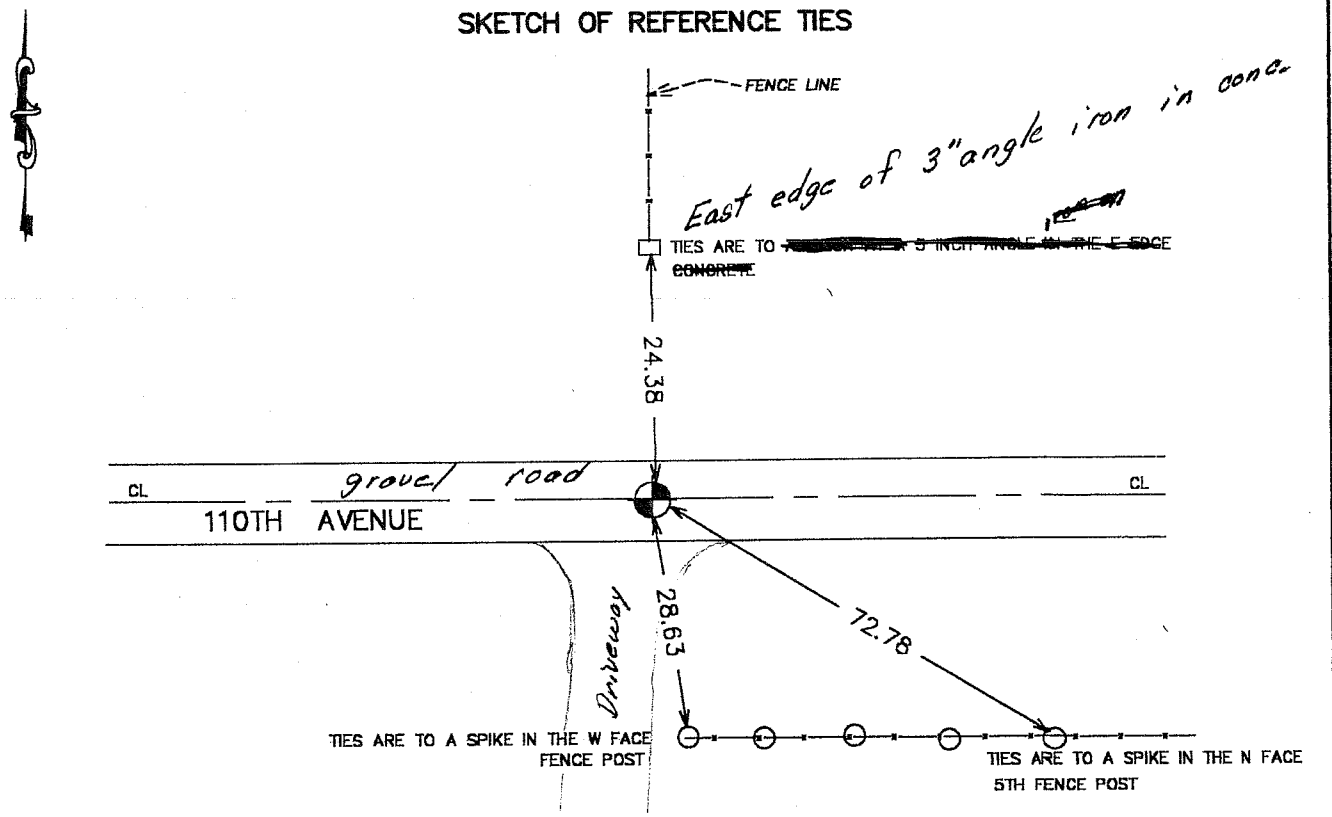
Northing= 105822.704

Easting= 401223.792

Note: NAD 1983, HARN 1996 Adjustment  
coordinates are NOT compatible with  
NAD 1983 coordinates

Note: 1 Meter=3937/1200 U.S. Survey Feet

## SKETCH OF REFERENCE TIES



Statement of evidence relative to this corner location is on back of page.

I hereby certify that this document and the data contained herein was prepared by me or under my direct supervision.

Ernest J. Rud 1-21-2003  
Signature Date

Registration No. 9808

Land Surveyor,  Professional Engineer  
 County Surveyor,  County Engineer

### OFFICE OF THE COUNTY RECORDER

County of \_\_\_\_\_

I hereby certify that this document was filed in the County Recorder's office at \_\_\_\_\_ M. on the \_\_\_\_\_ day of \_\_\_\_\_ A.D., 20\_\_\_\_

County Recorder \_\_\_\_\_

BY \_\_\_\_\_ Deputy

DOCUMENT NO. \_\_\_\_\_

## STATEMENT OF EVIDENCE

Original corner was set by Silas Bernard in July of 1855. Bearing trees no longer remain.

John Nelson County Surveyor surveyed Section 25 on December 13, 1904 as recorded Book 2 of surveys Page 34. On November 4, 1901 John Nelson also did a survey from Southeast corner to South Quarter to center as recorded in Book 2, Page 12. No other records of surveys in County Office.

On April 5, 2002 we measured around Section 25 tied in occupation lines and set control. We set a 60 penny spike on centerline / centerline of road and on extension of an old fence to the North. On April 26, 2002 we excavated a 15 foot by 15 foot hole 18 inches below natural ground. We found a 6 inch boulder below our spike, but no "x" on it. We accepted our location, as it fits John Nelson's measurements within a foot to West Quarter corner and South Quarter corner. Testimony from Kenneth and Eldon Krotz indicated fence going to North was set by Andrew Franson in 1936 and was on Section line. Set monument, took ties and established county coordinates for corner.