

CERTIFICATE OF LOCATION OF GOVERNMENT CORNER

EAST QUARTER Corner of Section 35, Township 38, Range ~~24~~, 4TH P.M.
 STATE OF MINNESOTA, County of KANABEC

At the corner location shown on the sketch:

SET THIS MONUMENT
 AND ESTABLISHED G.P.S. COORDINATES ON ITS LOCATION.

Kanabec County U.S. Survey Feet Coordinates
 NAD 1983, HARN 1996 Adjustment
 Obtained by RTK GPS Observation

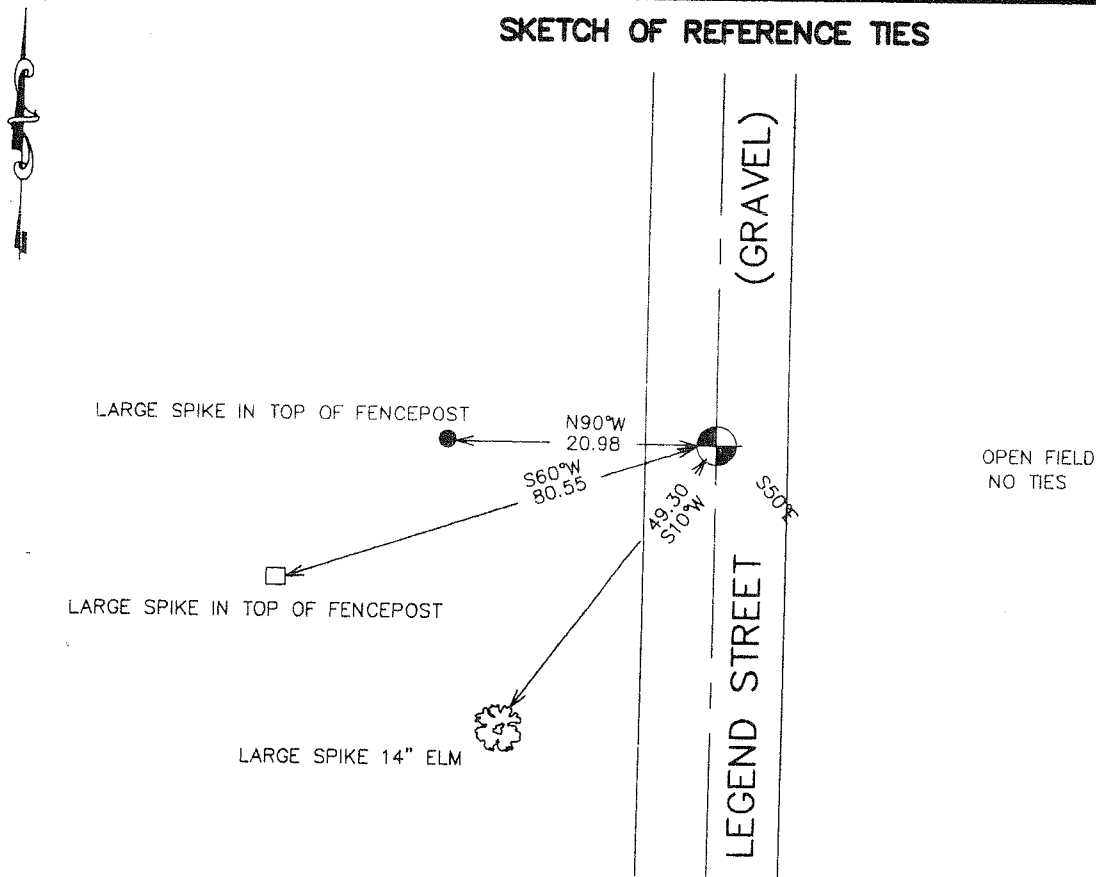
Northing= 103154.028

Easting= 401236.510

Note: NAD 1983, HARN 1996 Adjustment
 coordinates are NOT compatible with
 NAD 1983 coordinates

Note: 1 Meter=3937/1200 U.S. Survey Feet

SKETCH OF REFERENCE TIES



OPEN FIELD
 NO TIES

Statement of evidence relative to this corner location is on back of page.

I hereby certify that this document and the data
 contained herein was prepared by me or under
 my direct supervision.

Ernest Ghed
 Signature

10-12-2006
 Date

Registration No. Minn No 9808

Land Surveyor, [] Professional Engineer

[] County Surveyor, [] County Engineer

OFFICE OF THE COUNTY RECORDER

County of _____

I hereby certify that this document was filed in
 the County Recorder's office at _____ M. on the

_____ day of _____ A.D., 20__

County Recorder _____

BY _____ Deputy

DOCUMENT NO. _____

EAST QUARTER CORNER SECTION 35, T38, R24

STATEMENT OF EVIDENCE

THE ORIGINAL CORNER WAS SET BY U.S. DEPUTY SURVEYOR SILAS BARNARD ON JULY 19, 1855. AN INTERESTING NOTE IS THAT ALL PREVIOUS WORK IN THIS TOWNSHIP WAS DONE BETWEEN SEPTEMBER 4-13, 1849. A POST WAS SET AND A YELLOW BIRCH AND BLACK ASH WERE USED AS BEARING TREES. NO VISIBLE EVIDENCE REMAINS OF THE CORNER OR BEARING TREES.

THERE IS A SURVEY ON RECORD MADE BY JOHN NELSON ON NOVEMBER 5TH, 1901 FOR A ROAD OPENING ALONG THE EAST LINE OF SECTION 35. THIS RAN FROM THE NORTHEAST CORNER OF SECTION 35 TO THE CENTERLINE OF COUNTY ROAD #4 WHICH IS AT THE SOUTHEAST CORNER OF THE NORTHEAST QUARTER OF THE SOUTHEAST QUARTER OF SECTION 35.

IN NOVEMBER 2005 E.G. RUD AND SONS RAN A SURVEY AROUND SECTION 35 TO LOCATE EXISTING MONUMENTATION AND LINES OF OCCUPATION. THIS CORNER FALLS ON THE CENTERLINE OF AN OLD ROADBED RUNNING NORTH-SOUTH AND A FENCE LINE RUNNING WEST.

WE ESTABLISHED THIS CORNER BY PRO-RATING JOHN NELSONS MEASUREMENTS FROM THE CENTERLINE OF COUNTY ROAD 4 AND THE NORTHEAST CORNER OF SECTION 35. THIS FALLS WITHIN 2 FEET OF JOHN NELSONS MEASUREMENTS AND FIT HIS ANGLE VERY CLOSE. A #7 REBAR WITH AN ALUMINUM CAP WAS SET, TIES TAKEN AND G.P.S. COORDINATES ESTABLISHED ON THE CORNER.