

CERTIFICATE OF LOCATION OF GOVERNMENT CORNER

SOUTH QUARTER CORNER OF SECTION 36, TOWNSHIP 38, RANGE 24, 4TH PM.
STATE OF MINNESOTA, COUNTY OF KANABEC

AT THE CORNER LOCATION SHOWN ON THE SKETCH:

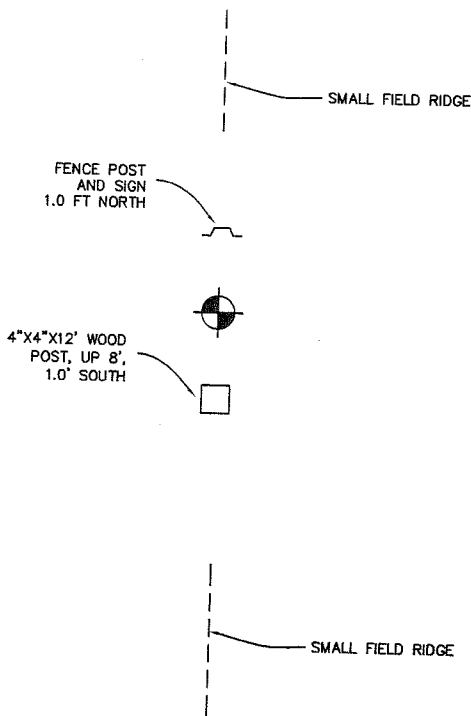
ON 02/ /05 FOUND
KANABEC COUNTY MONUMENT
(ISANTI CO. CAST IRON MONUMENT)

KANABEC COUNTY U.S. SURVEY
FEET COORDINATES
NAD 1983, HARN 1996
ADJUSTMENT OBTAINED BY RTK
GPS OBSERVATION
NORTHING= 100547.75

NOTE: NAD 1983, HARN 1996
ADJUSTMENT COORDINATES ARE
NOT COMPATIBLE WITH NAD 1983
COORDINATES
EASTING= 403923.11

NOTE: 1 METER= $\frac{3937}{1200}$ U.S. SURVEY FEET

SKETCH OF REFERENCE TIES



STATEMENT OF EVIDENCE RELATIVE TO THIS CORNER LOCATION IS ON THE BACK OF THIS PAGE

I HEREBY CERTIFY THAT THIS DOCUMENT AND THE DATA CONTAINED HEREIN WAS PREPARED BY ME OR UNDER MY DIRECT SUPERVISION.

Ernest Blud 11-18-2005
SIGNATURE DATE

REGISTRATION NO. Minn No 9808

- LAND SURVEYOR COUNTY SURVEYOR
 PROF. ENGINEER COUNTY ENGINEER

OFFICE OF THE COUNTY RECORDER
COUNTY OF _____

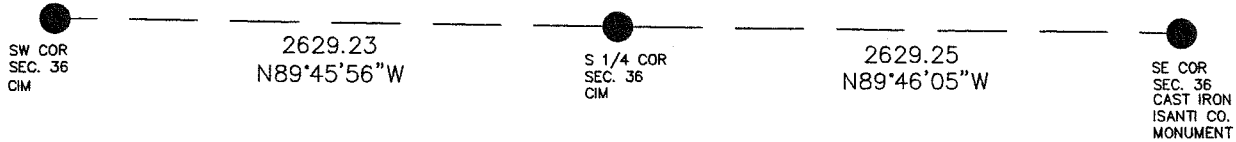
I HEREBY CERTIFY THAT THIS DOCUMENT WAS FILED IN THE COUNTY RECORDER'S OFFICE AT _____ M. ON THE _____ DAY OF _____, 2____.

COUNTY RECORDER _____

BY _____, DEPUTY

DOCUMENT NO. _____

STATEMENT OF EVIDENCE



FROM ISANTI COUNTY TIE SHEET:

Note: Book A and/or Book B if noted hereon are old survey records on file in the Isanti County Recorder's Office.

We set the North Quarter corner of Section 1 at S.P.M. between the northeast and the northwest corners of Section 1— this position fits the occupied North-South quarter line in Section 1, T37, R24 and south part of North-South quarter line in Section 36, T38, R24.

This corner position has been used by us for Isanti County Highway Right of Way Plat No. 8 & 9

In February 2005, E.G. Rud's Land Surveying established Kanabec County coordinates on this location using GPS equipment.