

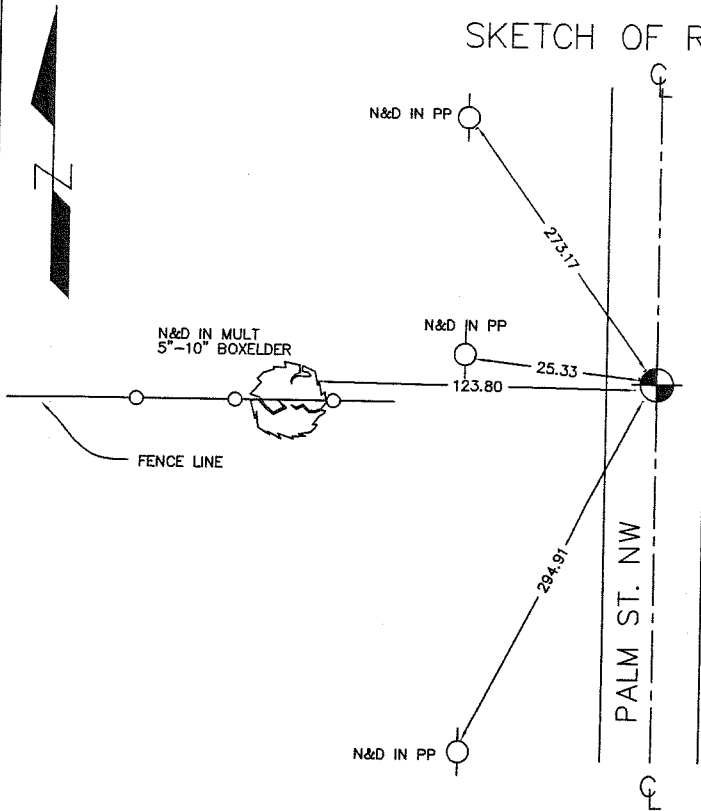
# CERTIFICATE OF LOCATION OF GOVERNMENT CORNER

SOUTHEAST CORNER OF SECTION 35, TOWNSHIP 38, RANGE 24, 4TH PM.  
STATE OF MINNESOTA, COUNTY OF KANABEC

AT THE CORNER LOCATION SHOWN ON THE SKETCH:  
  
ON 02/ /05 FOUND  
KANABEC COUNTY MONUMENT  
(ISANTI CO. CAST IRON MONUMENT)

KANABEC COUNTY U.S. SURVEY  
FEET COORDINATES  
NAD 1983, HARN 1996  
ADJUSTMENT OBTAINED BY RTK  
GPS OBSERVATION  
NORTHING= 100558.50  
  
NOTE: NAD 1983, HARN 1996  
ADJUSTMENT COORDINATES ARE  
NOT COMPATIBLE WITH NAD 1983  
COORDINATES  
EASTING= 401293.91  
  
NOTE: 1 METER=  $\frac{3937}{1200}$  U.S. SURVEY FEET

## SKETCH OF REFERENCE TIES



STATEMENT OF EVIDENCE RELATIVE TO THIS CORNER LOCATION IS ON THE BACK OF THIS PAGE

I HEREBY CERTIFY THAT THIS DOCUMENT AND THE DATA CONTAINED HEREIN WAS PREPARED BY ME OR UNDER MY DIRECT SUPERVISION.

*Ernest G. Rud* 11-18-2005  
SIGNATURE DATE

REGISTRATION NO. Minn No 9808

- LAND SURVEYOR     COUNTY SURVEYOR  
 PROF. ENGINEER     COUNTY ENGINEER

OFFICE OF THE COUNTY RECORDER

COUNTY OF \_\_\_\_\_

I HEREBY CERTIFY THAT THIS DOCUMENT WAS FILED IN THE COUNTY RECORDER'S OFFICE AT \_\_\_\_\_ M. ON THE \_\_\_\_\_ DAY OF \_\_\_\_\_, 2\_\_\_\_.

COUNTY RECORDER \_\_\_\_\_

BY \_\_\_\_\_, DEPUTY

DOCUMENT NO. \_\_\_\_\_

## STATEMENT OF EVIDENCE

---

FROM ISANTI COUNTY TIE SHEET:

Note: Book A and/or Book B if noted hereon are old survey records on file in the Isanti County Recorder's Office.

We set the Northeast corner of Section 2 at the intersection of centerline of the north-east township road and fence line westerly.

This corner position has been used by us for Isanti County Highway Right of Way Plat No. 8 & 9

---

In February 2005, E.G. Rud's Land Surveying established Kanabec County coordinates on this location using GPS equipment.