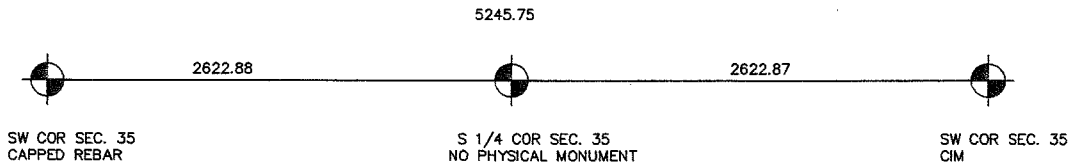
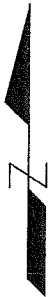


CERTIFICATE OF LOCATION OF GOVERNMENT CORNER

SOUTH QUARTER CORNER OF SECTION 35, TOWNSHIP 38, RANGE 24, 4TH PM.
STATE OF MINNESOTA, COUNTY OF KANABEC

AT THE CORNER LOCATION SHOWN ON THE SKETCH: ON 02/ /05 NO PHYSICAL CORNER SET	KANABEC COUNTY U.S. SURVEY FEET COORDINATES NAD 1983, HARN 1996 ADJUSTMENT OBTAINED BY RTK GPS OBSERVATION NOTE: NAD 1983, HARN 1996 ADJUSTMENT COORDINATES ARE NOT COMPATIBLE WITH NAD 1983 COORDINATES NOTE: 1 METER= ³⁹³⁷ / ₂₀₀₀ U.S. SURVEY FEET	NORTHING= <u>100575.93</u> EASTING= <u>398671.10</u>
---	---	---

SKETCH OF REFERENCE TIES



The position for this corner was set on line and midway between the SE and SW corners of Section 35 by the Isanti County Surveyor.

STATEMENT OF EVIDENCE RELATIVE TO THIS CORNER LOCATION IS ON THE BACK OF THIS PAGE

I HEREBY CERTIFY THAT THIS DOCUMENT AND THE DATA CONTAINED HEREIN WAS PREPARED BY ME OR UNDER MY DIRECT SUPERVISION.

Ernest Reed 11-18-2005
SIGNATURE DATE

REGISTRATION NO. Minn No 9208

- LAND SURVEYOR COUNTY SURVEYOR
 PROF. ENGINEER COUNTY ENGINEER

OFFICE OF THE COUNTY RECORDER

COUNTY OF _____

I HEREBY CERTIFY THAT THIS DOCUMENT WAS FILED IN THE COUNTY RECORDER'S OFFICE AT _____ M. ON THE _____ DAY OF _____, 2____.

COUNTY RECORDER _____

BY _____, DEPUTY

DOCUMENT NO. _____

STATEMENT OF EVIDENCE

In February 2005, E.G. Rud's Land Surveying established Kanabec County coordinates on this location using GPS equipment.