

CERTIFICATE OF LOCATION OF GOVERNMENT CORNER

SOUTHEAST Corner of Section 34, Township 38, Range 24, 4TH P.M.

STATE OF MINNESOTA, County of KANABEC

At the corner location shown on the sketch:
On 04/ /2003 Found a 4" by 17" Cast Iron Monument and an
Iron Pipe on top of Monument.

Kanabec County U.S. Survey Feet Coordinates
NAD 1983, HARN 1996 Adjustment
Obtained by RTK GPS Observation

Northing= 100593.56 100593.37

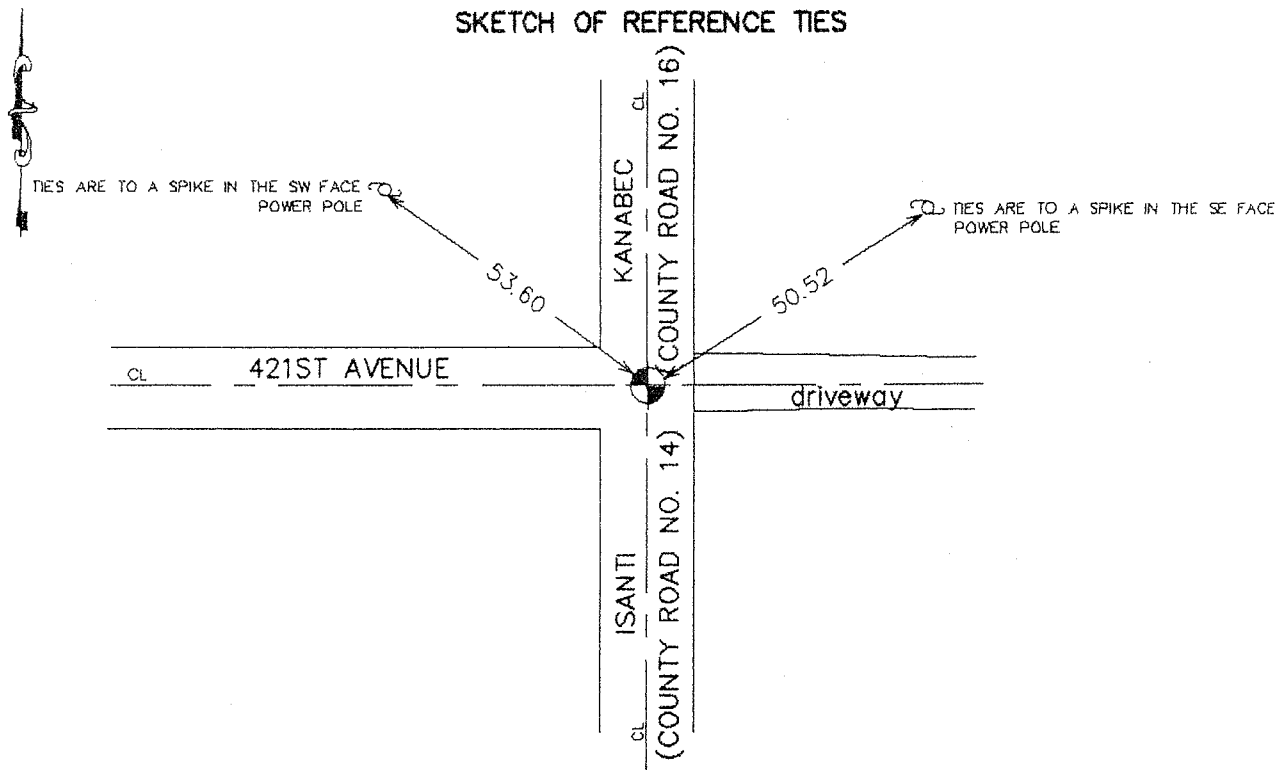
Easting= 396048.678 396048.27

Note: NAD 1983, HARN 1996 Adjustment
coordinates are NOT compatible with
NAD 1983 coordinates

Note: 1 Meter=3937/1200 U.S. Survey Feet

*Don H.
move
Mon.*

SKETCH OF REFERENCE TIES



Statement of evidence relative to this corner location is on back of page.

I hereby certify that this document and the data contained herein was prepared by me or under my direct supervision.

Ernst J. Reid
Signature

11-29-2003
Date

Registration No. 9808

- Land Surveyor, Professional Engineer
- County Surveyor, County Engineer

OFFICE OF THE COUNTY RECORDER

County of _____

I hereby certify that this document was filed in the County Recorder's office at _____ M. on the _____ day of _____ A.D., 20____

County Recorder _____

BY _____ Deputy

DOCUMENT NO. _____

STATEMENT OF EVIDENCE

from tie sheet No 661

All of the original bearing trees are now gone.

In 1901, John Nelson made a survey in Section 34, recorded in surveyor's record book 2, page 5. This record shows he used the Southeast corner of Section 34, but does not show what was set.

On August 19, 1982, we ran a survey along the east lines of Section's 22, 27 and 34 to locate existing monument and lines of occupation.

This corner is at the intersection of roads north-south and west.

On August 24, 1982, we made an excavation with the county's backhoe.

At 3.5 feet below the surface at natural ground we found a pointed stone and the base of a 3" pointed post. We offset the stone and continued the excavation to 5 feet below the surface 1 foot into natural ground. The excavation was 12 feet square. No additional evidence was found.

We accepted the pointed stone as the original corner location used by John Nelson in 1901 and set a 4" by 17" cast iron monument at this location, 6" below the surface.

On September 21, 1982, after the road had been resurfaced we set a 1/2" iron pipe with a plastic cap marked "R.L.S. No. 8195" on top of the Cast Iron Monument, flush with the surface.